



SELVA & Co.
COMERCIAL

www.selvacomercial.com



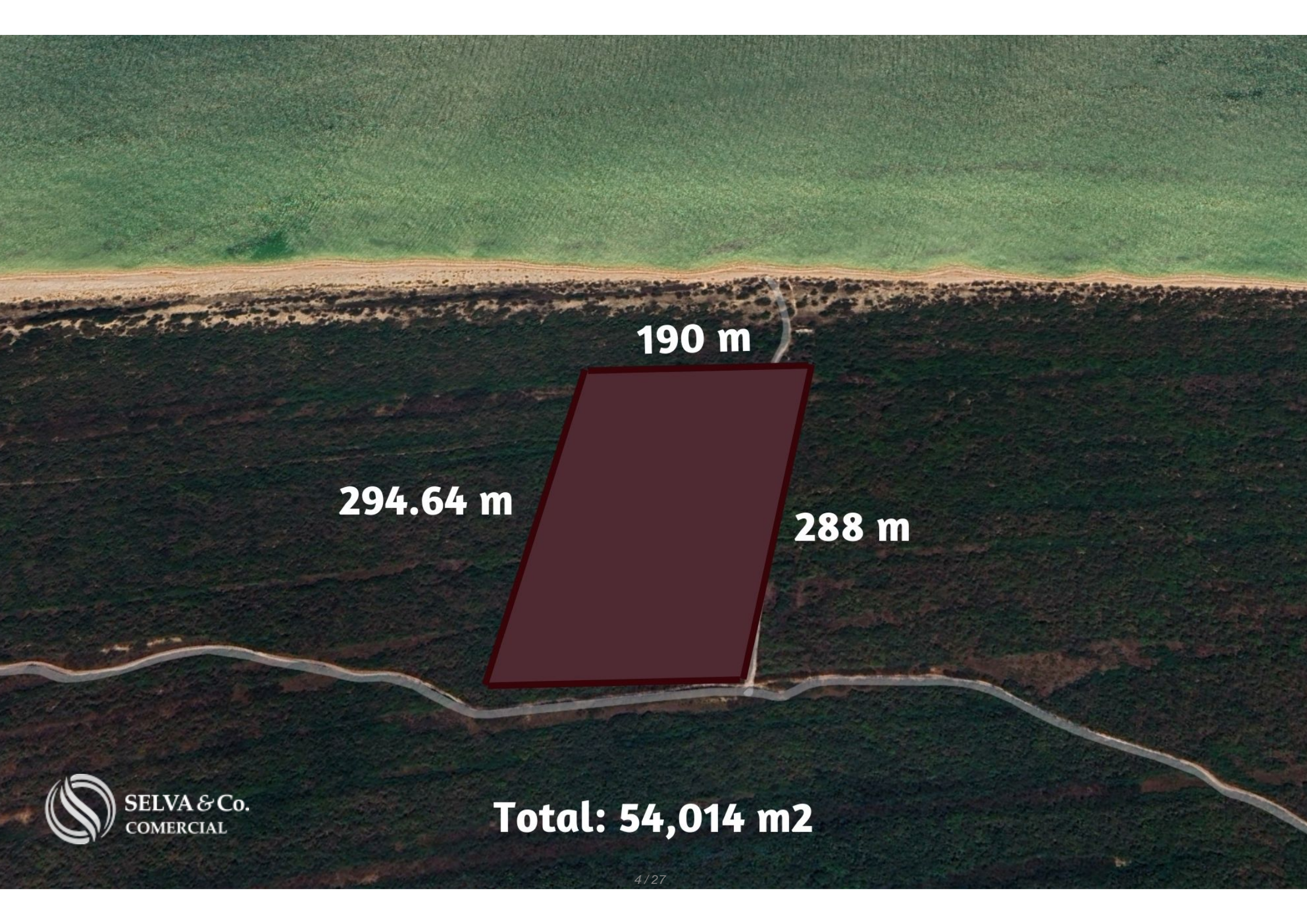
54,014 m²

Oceanfront lot of 54,014 sqm, multifamily, for sale in Yucatan.

<i>ID: ALME200-5</i>	<i>Location: Mérida</i>
<i>Type: Land</i>	<i>Land: 54,014 m2 / 581,406.70 ft</i>
<i>Land ha: 5.40 ha / 13.35 ac</i>	<i>Land use: Multifamiliar</i>



54,014 m²



190 m

294.64 m

288 m

Total: 54,014 m²

An aerial photograph showing a coastal area. A large, irregularly shaped plot of land is highlighted with a dark red border. The plot is situated on a hillside covered in dense, dark green vegetation. To the left of the plot, there is a sandy beach and a body of water with a greenish tint. A winding road or path runs along the bottom edge of the plot. The text "54,014 m2" is written in white inside the highlighted area.

54,014 m2





SELVA & Co.
COMERCIAL



SELVA & Co.
COMERCIAL



SELVA & Co.
COMERCIAL



Reserva ecológica *Ecological Reserve* **"El Palmar"**



SELVA & Co.
COMERCIAL

**Reserva ecológica
estatal, El Palmar**

“El Palmar”



**Reserva de la
biosfera, Ría
Celestún**

Ría Celestún

Celestún

**TERRENO
LOT**

TERRENO EN VENTA



Sisal

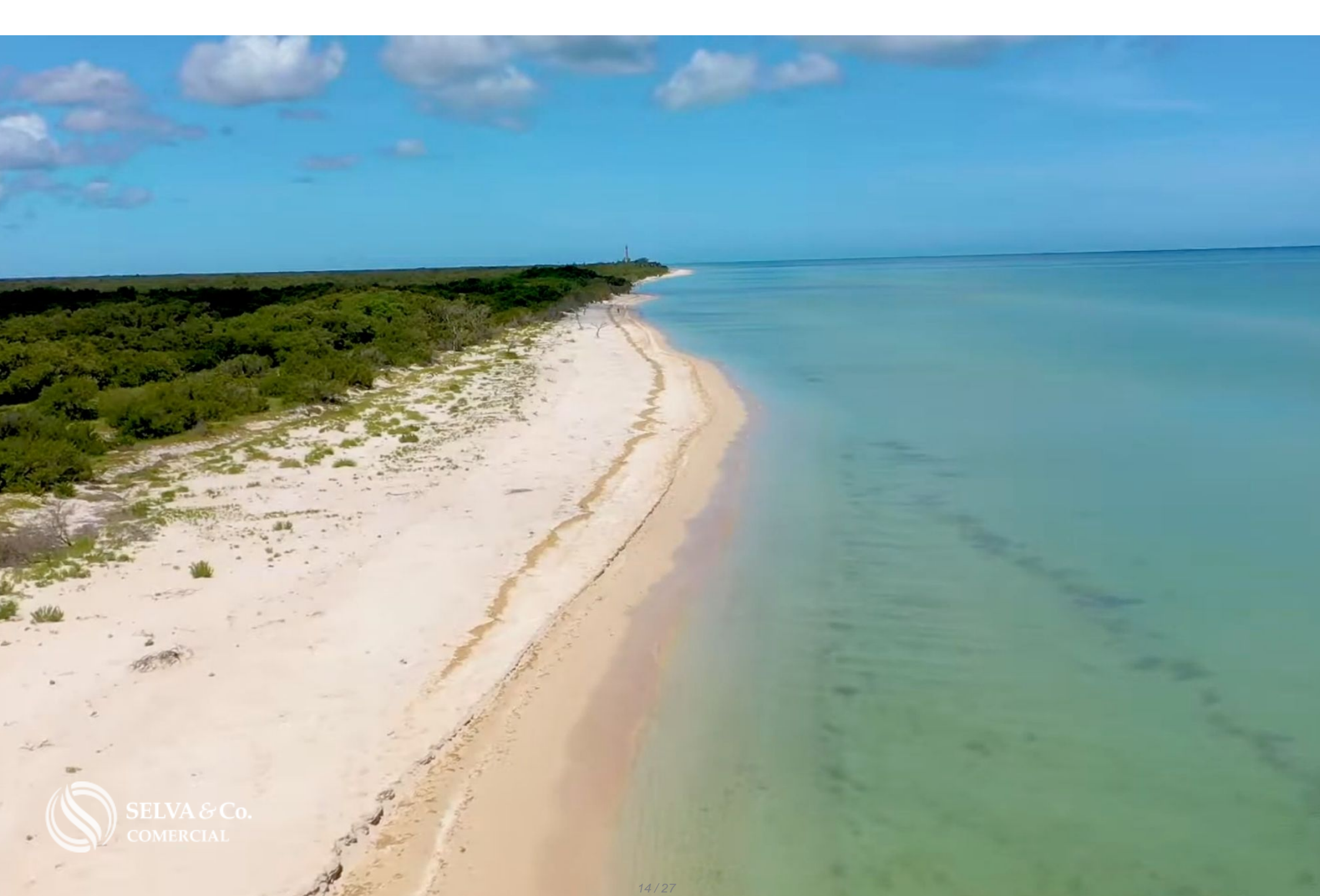
Hunucmá

Umán



Celestún
SELVA & Co.
COMERCIAL







Reserva ecológica ***Ecological Reserve*** **"El Palmar"**

Reserva ecológica *Ecological Reserve* **"El Palmar"**

Reserva de la Biosfera "Ría Celestún"



SELVA & Co.
COMERCIAL



190 m

294.64 m

288 m

Total: 54,014 m²

Reserva de la Biosfera "Ría Celestún"

An aerial photograph showing a coastal area. A large, dark green, forested area occupies the right and bottom portions of the image. A light-colored, sandy beach runs along the top left edge. A winding road or path is visible, separating the forest from the beach. A dark red, diamond-shaped polygon is overlaid on the forested area, containing the text "54,014 m2".

54,014 m2



Description

ALME200-5 Andrea Llergo

Oceanfront lot of 54,014 sqm, multifamily, for sale in Yucatan.

Multifamily land facing the sea, with a beautiful white sand beach and dune at the front.

Located within the ecological reserve "El Palmar" in Celestún, and just minutes away from the beautiful "Celestún Biosphere Reserve."

Due to its incredible location, it offers beautiful views of the sea and nature.

LAND FEATURES

Land use: Multifamily

Paved road

Sand road

PROPERTY STATUS

Property title, legal certainty.

PRICE PER LINEAR METER

\$190,000.00 MXN

DIMENSIONS

190 x 288 x 294.64

Total: 54,014.00 sqm

LOCATION

Land for sale in Celestún, Yucatán, facing the beautiful beach and surrounded by ecological reserves, very close to the lighthouse.

30 minutes from the municipal seat of Celestún.

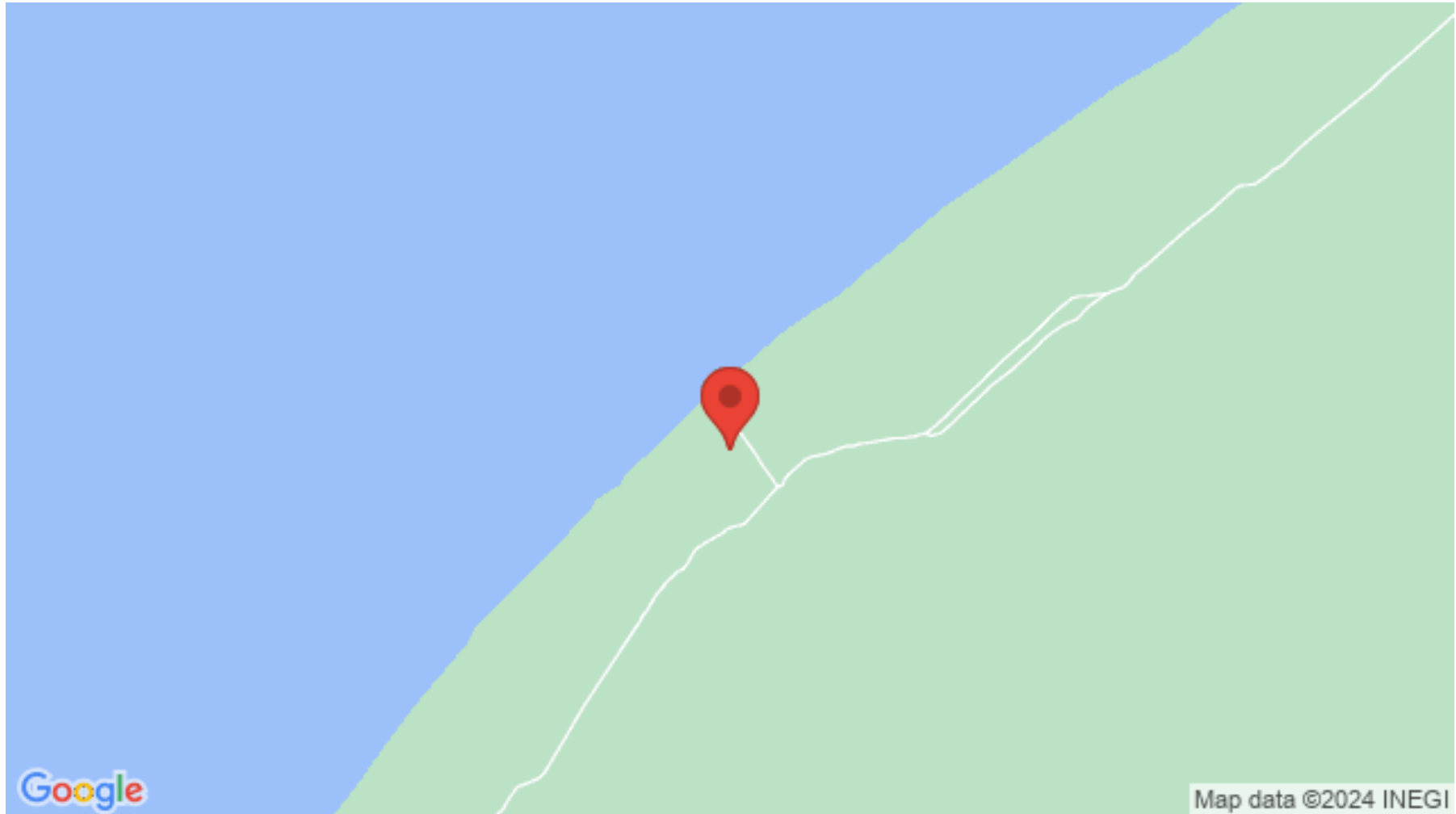
2 hours from Mérida.

If you want more information about it or learn more about the real estate market in the Celestún area, contact us. We will be happy to help you in your new investment in Yucatán

The official price of this property is in pesos the price in dollars is a reference. The days exchange rate will be used for the purchase.

Schedule your appointment to visit the area or call us to answer your questions.

Location





SELVA & Co.
COMERCIAL

MX 984 803 2058 / US 805 308 2900

www.selvacomercial.com