



SELVA & Co.  
COMERCIAL

[www.selvacomercial.com](http://www.selvacomercial.com)



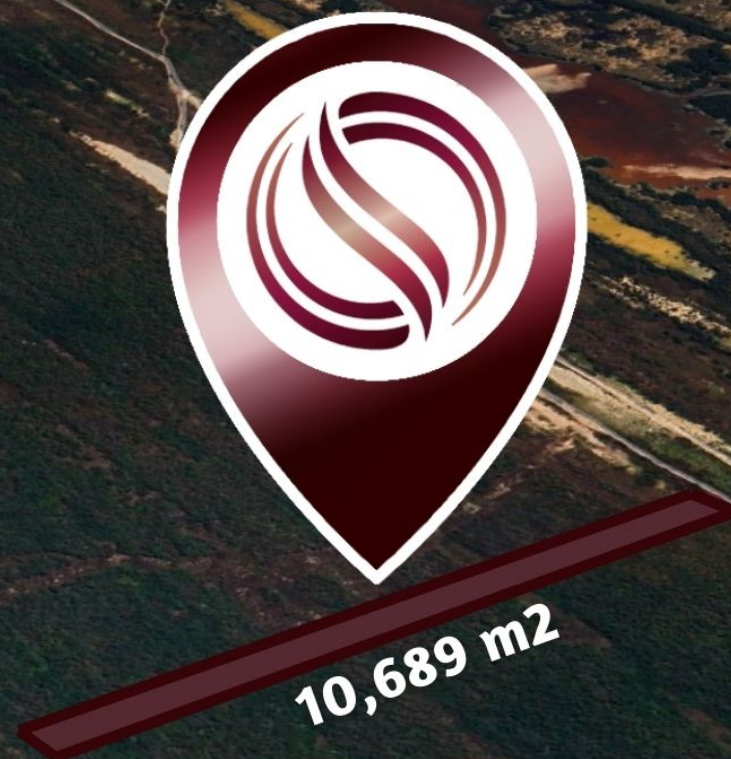
10,689 m<sup>2</sup>



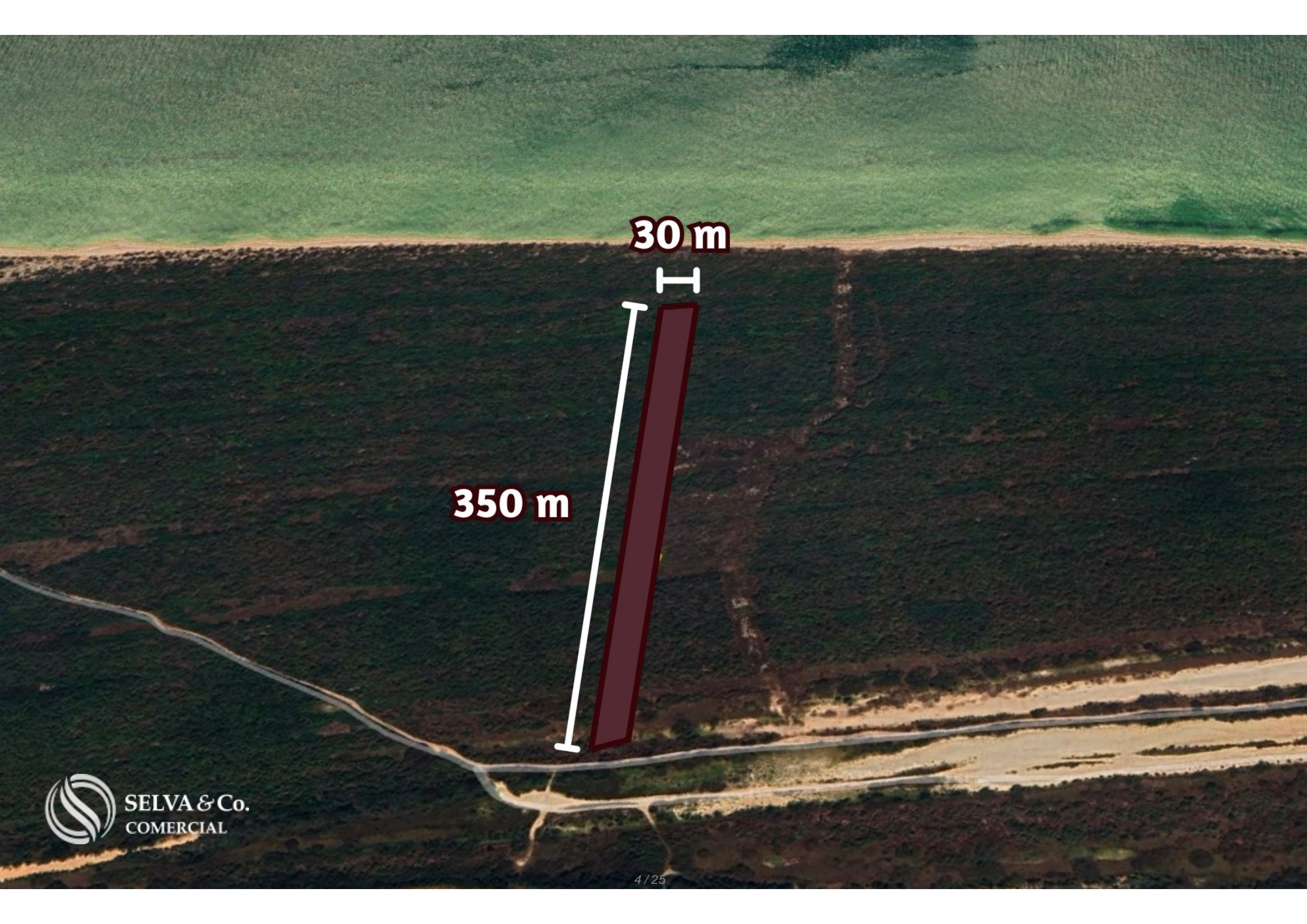
# Oceanfront lot of 10,690 sqm, multifamily, for sale in Yucatan.

<i>ID: ALME200-3</i>	<i>Location: Mérida</i>
<i>Type: Land</i>	<i>Land: 10,690 m2 / 115,067.16 ft</i>
<i>Land ha: 1.07 ha / 2.64 ac</i>	<i>Land use: Multifamiliar</i>









**30 m**

H

**350 m**



**SELVA & Co.**  
COMERCIAL





**Total: 10,689 m2**





SELVA & Co.  
COMERCIAL





SELVA & Co.  
COMERCIAL









SELVA & Co.  
COMERCIAL







# **Reserva ecológica** *Ecological Reserve* **"El Palmar"**



**Reserva ecológica  
estatal, El Palmar**

**“El Palmar”**



**Reserva de la  
biosfera, Ría  
Celestún**

**Ría Celestún**

**Celestún**

**TERRENO  
LOT**



TERRENO EN VENTA



Celestún  
SELVA & Co.  
COMERCIAL

Sisal

Hunucmá

Uman





An aerial photograph of a tropical coastline. The top left corner shows turquoise water meeting a sandy beach. The rest of the image is covered in dense, dark green forest. A thick, bright green diagonal line runs from the upper left towards the lower right. A yellow pushpin is placed on this line. The text 'TERRENO EN VENTA' is written in yellow capital letters across the middle of the image, partially overlapping the green line and the forest.

TERRENO EN VENTA



SELVA & Co.  
COMERCIAL



**Reserva ecológica**  
***Ecological Reserve***  
**"El Palmar"**



# **Reserva ecológica** *Ecological Reserve* **"El Palmar"**



SELVA & Co.  
COMERCIAL









SELVA & Co.  
COMERCIAL



# Reserva de la Biosfera "Ría Celestún"



SELVA & Co.  
COMERCIAL



GOLFO DE MEXICO  
zona marítima federal

30.00

6

Tablote  
3830

fracción 5  
362.11

Tablote  
3831

350.55  
fracción 7

Tablote  
3832

32.07  
AL PALMAR

(prolong. calle 12.)  
Camino  
hacia  
Celestón  
y Sibal

EST  
INSTITUTO DE SEC

tab. 1542  
21km  
calle T1  
tab. 38  
1,377.90



## Description

ALME200-3 Andrea Llergo

Oceanfront lot of 10,690 sqm, multifamily, for sale in Yucatan.

Multifamily land facing the sea, with a beautiful white sand beach and dune at the front.

Located within the ecological reserve "El Palmar" in Celestún, and just minutes away from the beautiful "Celestún Biosphere Reserve."

Due to its incredible location, it offers beautiful views of the sea and nature.

## LAND FEATURES

Land use: Multifamily



Paved road

Sand road

## PROPERTY STATUS

Property title, legal certainty.

## PRICE PER LINEAR METER

\$190,000.00 MXN

## DIMENSIONS

30 x 350

Total: 10,689.55 sqm

## LOCATION

Land for sale in Celestún, Yucatán, facing the beautiful beach and surrounded by ecological reserves, very close to the lighthouse.



30 minutes from the municipal seat of Celestún.

2 hours from Mérida.

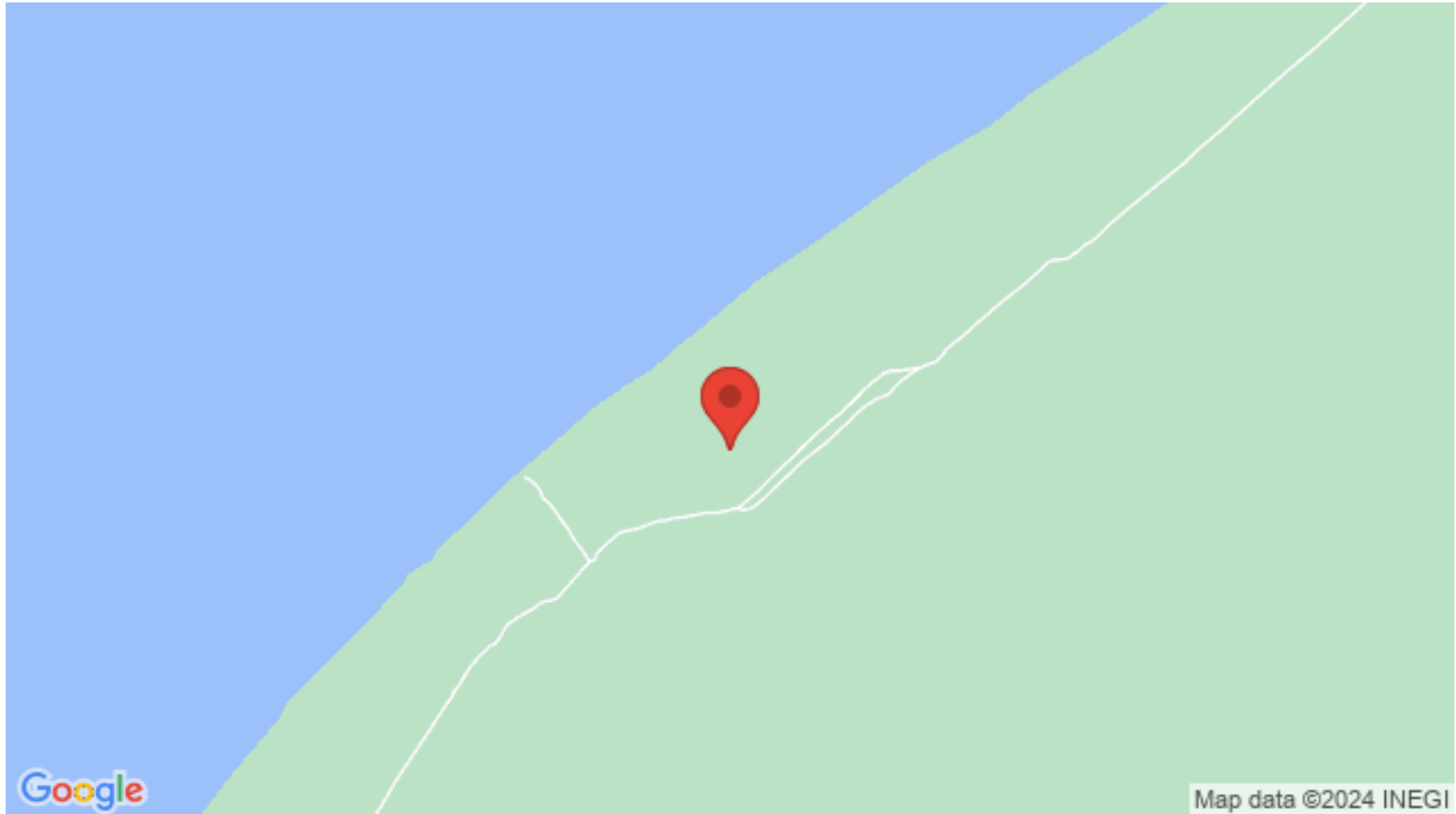
If you want more information about it or learn more about the real estate market in the Celestún area, contact us. We will be happy to help you in your new investment in Yucatán.

The official price of this property is in pesos the price in dollars is a reference. The day's exchange rate will be used for the purchase.

Schedule your appointment to visit the area or call us to answer your questions.



## Location







**SELVA & Co.**  
**COMERCIAL**

MX 984 803 2058 / US 805 308 2900

[www.selvacomercial.com](http://www.selvacomercial.com)