



SELVA & Co.
COMERCIAL

www.selvacomercial.com



**Land on 15 Ave., 450 meters from the sea
boardwalk, 2 minutes from the beach, for sale
Cozumel Downt**

<i>ID: ELC0202</i>	<i>Location: Cozumel</i>
<i>Type: Land</i>	<i>Land: 636 m2 / 6,845.90 ft</i>
<i>Land ha: 0.06 ha / 0.16 ac</i>	



SAN MIGUEL I

Dolphinaris Cozumel

CONZALO

GUERRERO

INDEPENDENCIA

ADOLFO LÓPEZ

MATEOS

Centro
Downtown

San Miguel
de Cozumel

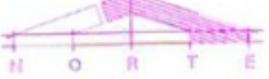
Museo de Cozumel
Museum

Terreno
Lot

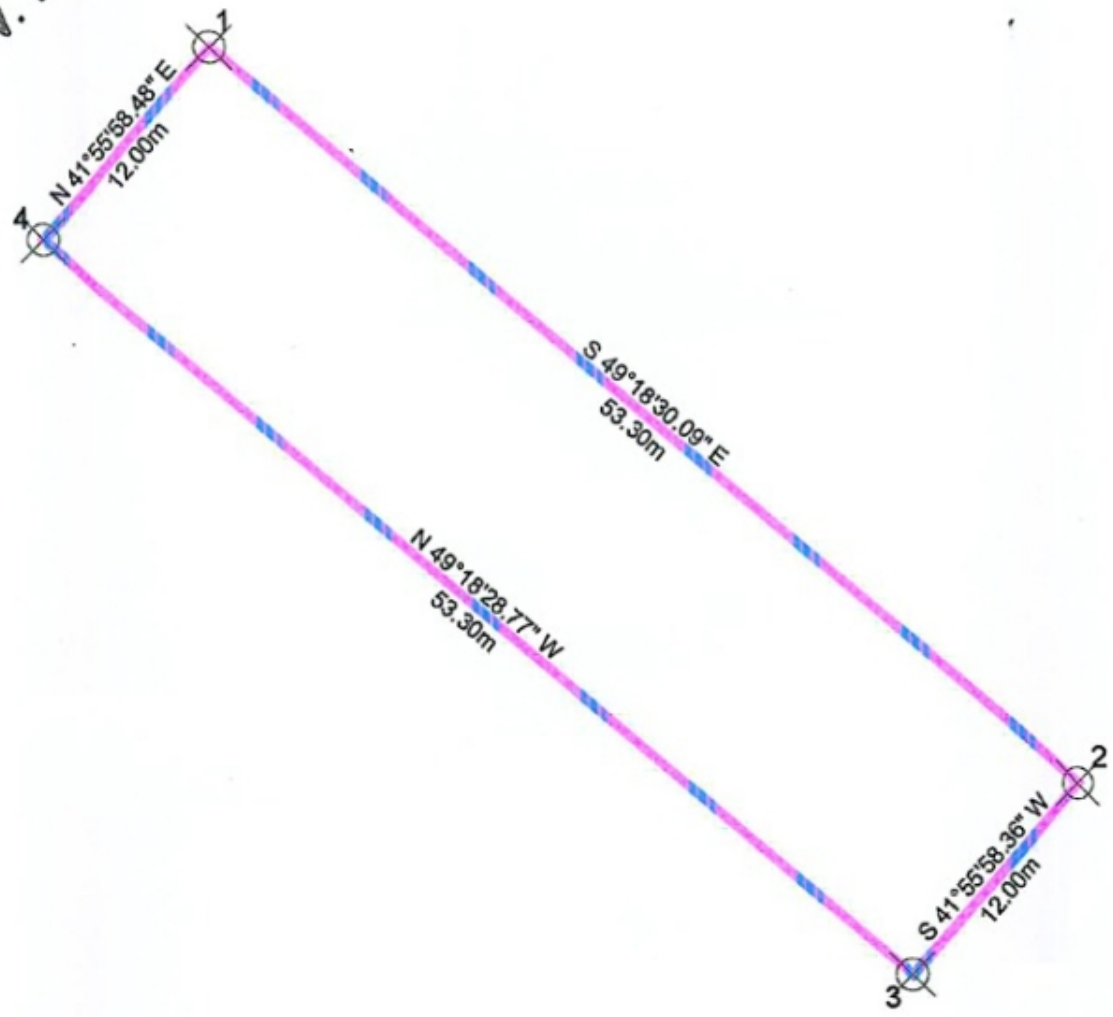
Playa casitas
Casitas Beach



SELVA & Co.
COMERCIAL
Airport



15 AV. NTE.





Ubicacion en la isla
Location on the island



SELVA & Co.
COMERCIAL

Calle cercana al terreno
Street near by the lot



Calle de doble carril cercana al terreno
Double way street near by the lot



SELVA & Co.
COMERCIAL

8/21

Malecón de Cozumel
Cozumel Sea Boardwalk



SELVA & Co.
COMERCIAL

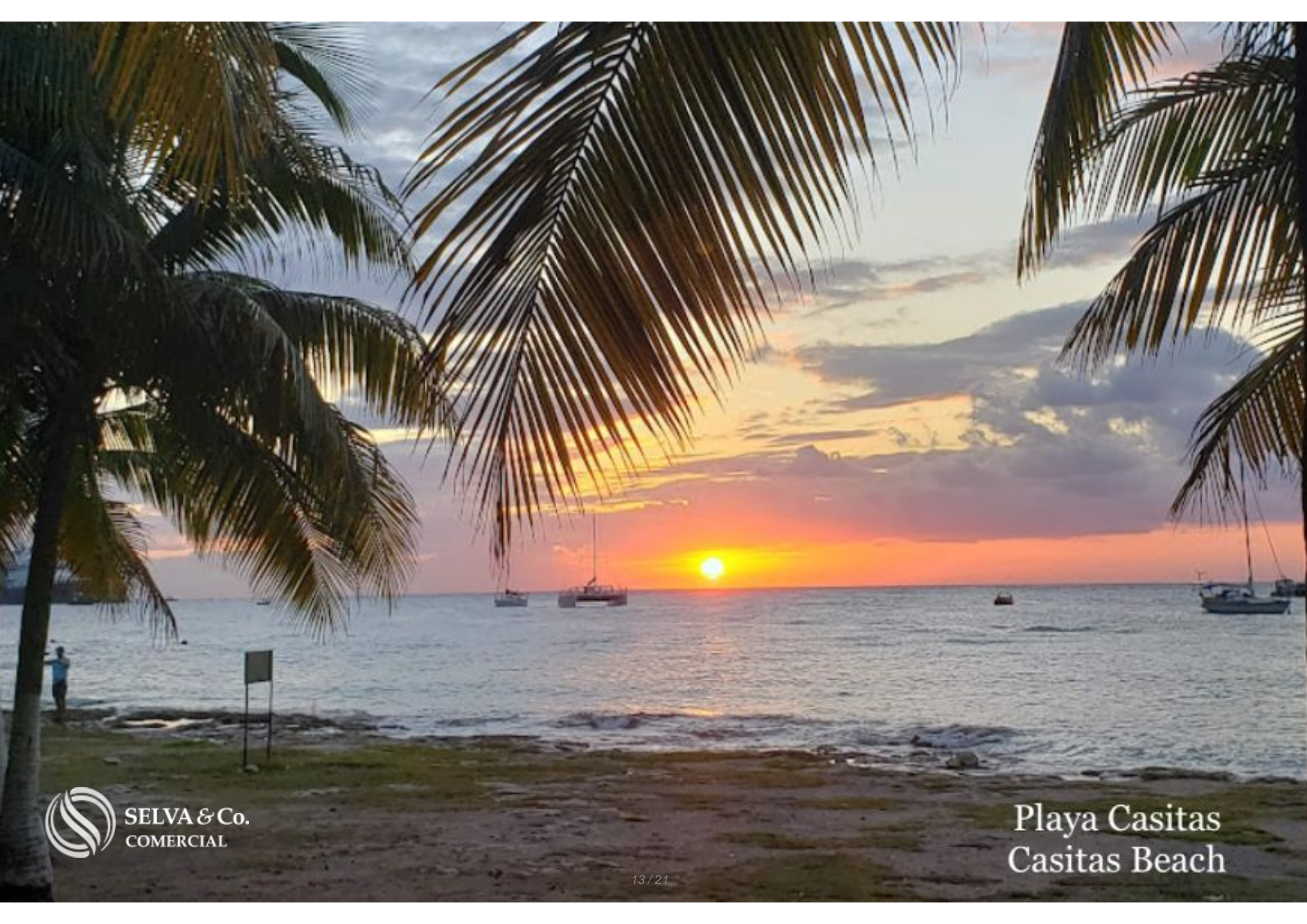
Parque cercano
Park near by



Ubicacion
Location









Description

ELCO202 Emma Selva

Land on 15 Ave., 450 meters from the sea boardwalk, 2 minutes from the beach, for sale Cozumel Downtown.

Lot for sale in downtown Cozumel. Land with construction of 133 m2.

MEASURES

12 meters x 53 meters

Total: 636 m2

SERVICES

- Paved roads
- Water service
- Light
- Sewer system.

PROPERTY STATUS

Property title, legal certainty.

PRICE

636 m2

Price X M2: \$535 USD (10,693 Pesos Approx.)

Total: \$340,000 USD

LOCATION

Lot located in ??Cozumel downtown, in a residential zone with easy access to schools and entertainment, surrounded by high-end homes and new condominium developments.

4 minutes walking from the Cozumel boardwalk just 450 meters.

950 meters from the Hemingway restaurant.

2 minutes by car from Playa Casitas.

3 minutes by car to Cozumel International Airport.

WALKING DISTANCE FROM THE BEACH

This apartment is located 10 minutes walk from the beach, 1 km from Playa Casitas.

450 meters from the boardwalk of Cozumel, the main attraction of the island, 8.6 kilometer boulevard, this is where the carnival ride takes place, you also find the best restaurants, jewelry stores, craft shops, souvenirs and nightclubs, the best place to visit on party nights or exercise and go for a walk during the day.

If you want more information about this land or learn more about the real estate market in the downtown area, contact us, it will be a pleasure to advise you on your new investment in Cozumel.

Schedule your appointment to visit the area or call us to answer your questions by clicking on the contact link.

Invest safely, call us to receive a free advice.

#ELCO202 #EmmaSelvaBySelvacorealty #Cozumellistings
#selvacorealty #selvacorealtyCozumel #selvacomercial
#selvacomercialCozumel #CozumelRealEstate #investinCozumel
#lotforsaleCozumel #realestateCozumel #Cozumel #landbankingCozumel
#landbankingmexico #landbanking #CentroCozumel #condoforsaleHuatulco
#housesforsaleCozumel #Cozumelproperties
#commercialandSanJosedelCabo #commercialrealestate
#Huatulcocommercialrealestate
#lots&landCozumel #landforsale #landforsaleCozumel

Location





SELVA & Co.
COMERCIAL

MX 984 803 2058 / US 805 308 2900

www.selvacomercial.com