



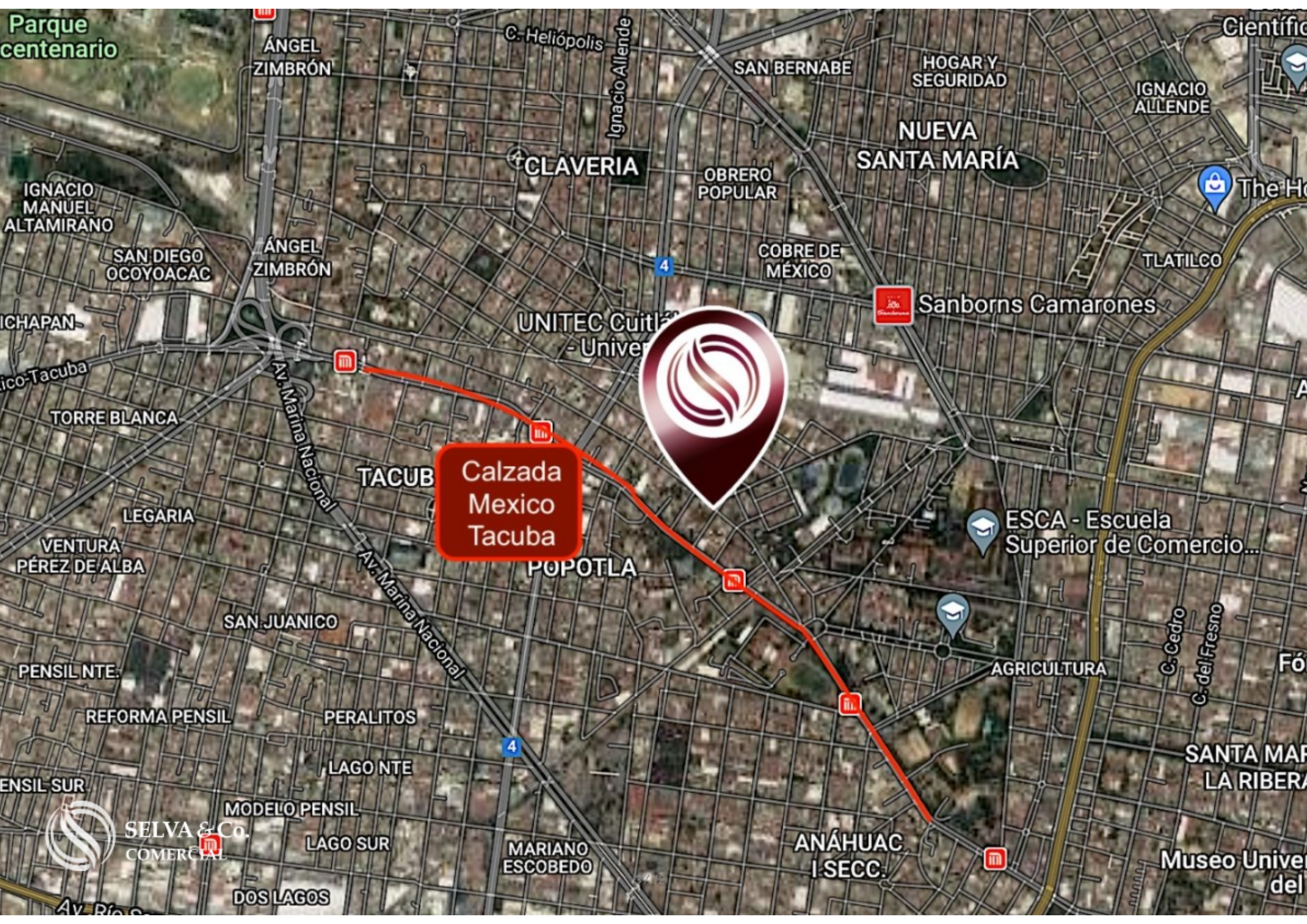
SELVA & Co.
COMERCIAL

www.selvacomercial.com



Condominium lot, land use H3, Miguel Hidalgo neighborhood, CDMX for sale, land for developers.

<i>ID: BLCM217</i>	<i>Location: Ciudad de México</i>
<i>Type: Land</i>	<i>Land: 1,440 m2 / 15,500.16 ft</i>
<i>Land ha: 0.14 ha / 0.36 ac</i>	



Parque centenario

ÁNGEL ZIMBRÓN

C. Heliópolis

Ignacio Allende

SAN BERNABÉ

HOGAR Y SEGURIDAD

IGNACIO ALLENDE

NUEVA SANTA MARÍA

CLAVERÍA

OBRERO POPULAR

COBRE DE MÉXICO

Sanborns Camarones

TLATILCO

The H

IGNACIO MANUEL ALTAMIRANO

SAN DIEGO OCOYOACAC

ÁNGEL ZIMBRÓN

ICHAPAN

ico-Tacuba

TORRE BLANCA

LEGARIA

VENTURA PÉREZ DE ALBA

TACUBA

Calzada Mexico Tacuba

POPOTLA

ESCA - Escuela Superior de Comercio...

SAN JUANICO

PENSIL NTE.

REFORMA PENSIL

PERALITOS

LAGO NTE

ENSIL SUR

MODELO PENSIL

LAGO SUR

MARIANO ESCOBEDO

ANÁHUAC I SECC.

AGRICULTURA

C. Cedro
C. del Fresno

SANTA MARÍA LA RIBERA

Museo Univer del

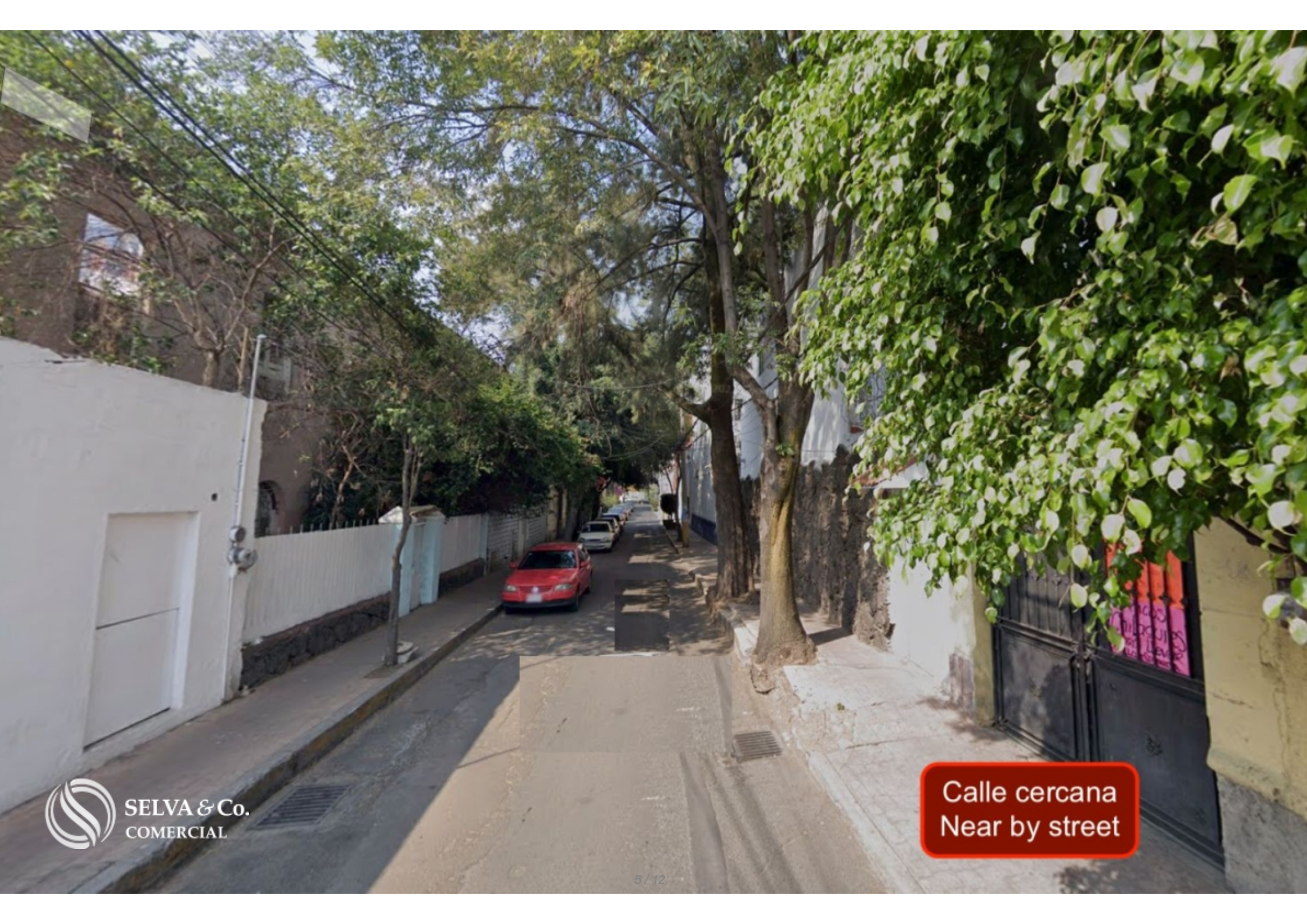


SELVA & Co. COMERCIAL

DOS LAGOS

Av. Río





SELVA & Co.
COMERCIAL

Calle cercana
Near by street

Description

BLCM217

Condominium lot, land use H3, Miguel Hidalgo neighborhood, CDMX for sale, land for developers.

Land-multifamily, to develop for sale Mexico City.

LOCATION

Land located in Popotla zone, of the Miguel Hidalgo Neighborhood.

19 minutes from Mexico City International Airport.

1 hour 6 minutes from AIFA Airport.

LAND USE

H3

MEASURES

- 33 meters of frontage
- 42 meters deep

FREE AREA

Area where construction is not allowed: 30%

MAXIMUM CONSTRUCTION SURFACE

3024 M2 (Subject to restrictions)

SERVICES

- Paved roads
- Water service
- Light
- Sewer system.

PRICE PER M2

25,694 Pesos (1,285 USD Approx.)

PRICE

37,000,000 pesos (1,850,000 USD Approx.)

PROPERTY STATUS

Property title, legal certainty.

If you want to visit this land and learn more about the Miguel Hidalgo neighborhood, contact us, it will be a pleasure to advise you on your new investment in Mexico

City.

Schedule your appointment or call by clicking on the contact link

#BLCM217 #CDMXlistings #selvacorealtyCDMX #selvacomercial #investinCDMX
#CDMXrealestate #realestateCDMX #CDMX #landbankingCDMX
#landbankingmexico #landbanking #commercialrealestatemexico
#commercialandCDMX #commercialrealestate
#lots&landCDMX #MiguelHidalgozone
#CDMXcommerciallistings #landforsaleCDMX #lotsforsaleCDMX

Location





SELVA & Co.
COMERCIAL

MX 984 803 2058 / US 805 308 2900

www.selvacomercial.com