



Estas imágenes son solo para fines ilustrativos. El producto final y el material utilizado están sujetos a cambios significativos a exclusivo criterio del desarrollador.

These images are merely illustrative. The final product and materials may be subject to significant changes at the developers discretion.

Commercial premises with terrace and private bathroom, 132 m2, in Region 15, pre construction, for

<i>ID: DTU302-2</i>	<i>Location: Tulum</i>
<i>Type: Local</i>	



SELVA & Co.

COMERCIAL

Estas imágenes son solo para fines ilustrativos. El producto final y el material utilizado están sujetos a cambios significativos a exclusivo criterio del desarrollador.

These images are merely illustrative. The final product and materials may be subject to significant changes at the developers discretion.



SELVA & Co.

COMERCIAL

Estas imágenes son solo para fines ilustrativos. El producto final y el material utilizado están sujetos a cambios significativos a exclusivo criterio del desarrollador.

These images are merely illustrative. The final product and materials may be subject to significant changes at the developers discretion.

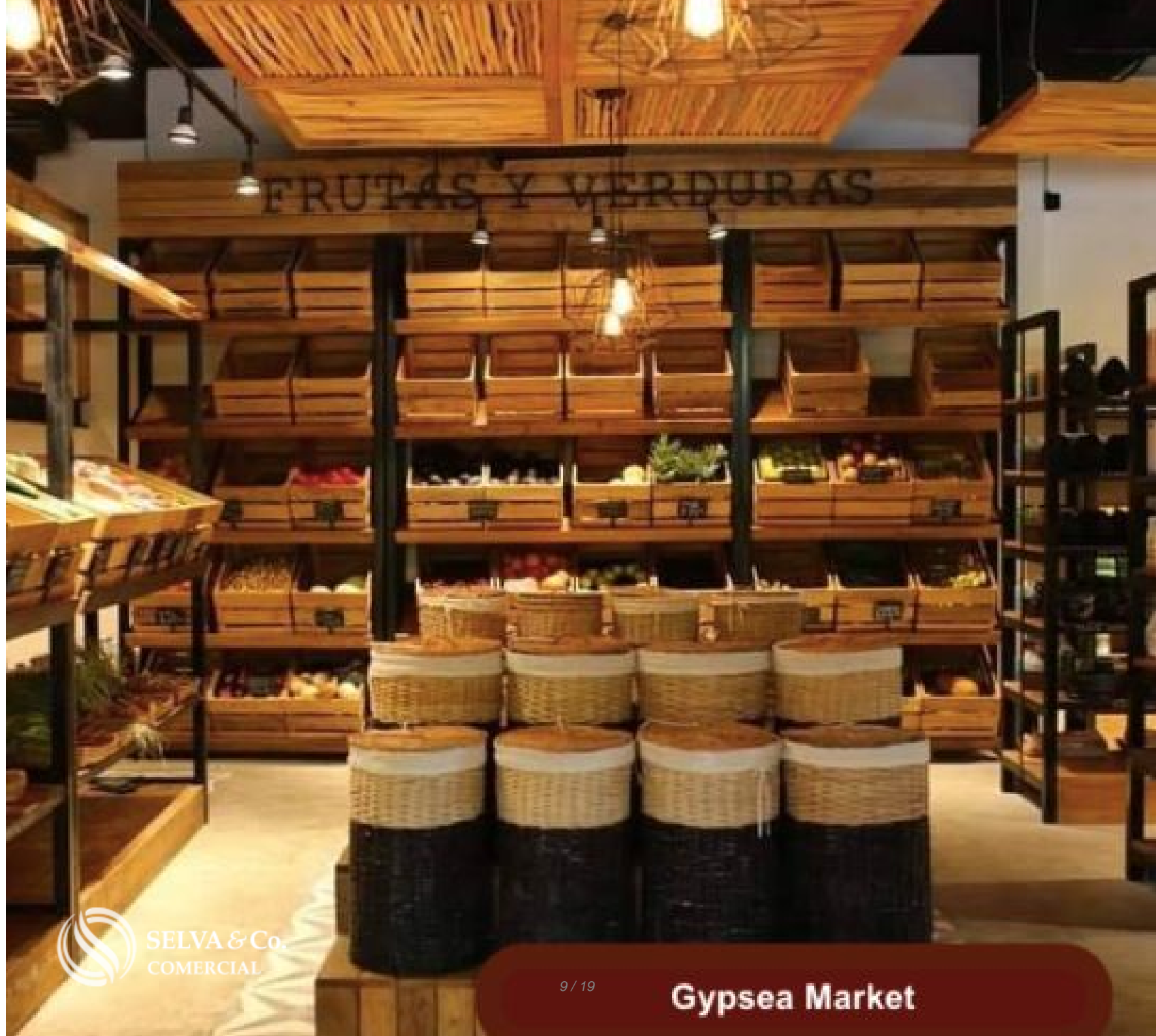


These images are merely illustrative. The final product and materials may be subject to significant changes at the developers discretion.









SELVA & Co.
COMERCIAL



SELVA & Co.
COMERCIAL

Holistika



SELVA & Co.
COMERCIAL

Holistika





SELVA & Co.
COMERCIAL

Temazcal
Holistika

Description

DTU302-2

Commercial premises with terrace and private bathroom, 132 m2, in Region 15, pre construction, for sale Tulum.

This place is located in a residential building with spaces surrounded by vegetation.

GREEN BUILDING

Building designed with ornamental plants that are part of the facade, large planters in common areas and green views on the main terrace.

OUTSTANDING CHARACTERISTICS OF THE COMMERCIAL PREMISES

Commercial premises with bathroom and terrace.

132 m2.

LOCATION

Commercial premises located in Region 15, a developing area in Tulum downtown, surrounded by iconic restaurants in the city, steps from the "Holistika" wellness center, home to the most incredible art walk in Tulum, and the best organic market in Tulum Gypsea market.

7 minutes by car from the hotel zone, where the best beach clubs in Mexico are located. 20 minutes by bike.

INVESTMENT IN PRE-CONSTRUCTION

Pre-sale premises. Delivery date: March 2023.

If you want to visit this business premises and learn more about the real estate market in Region 15 contact us, it will be a pleasure to advise you on your new investment in Tulum.

Schedule your appointment to visit the premises or call us to answer your questions by clicking on the contact link.

Invest safely, call us to receive a free advice.

#DTU302 #Tulumcommerciallistings #selvacorealty #selvacorealtyTulum
#selvacomercial #investintulum #commercialpremisesforsaletulum
#tulumcommercialrealestate #realestatetulum #premisesforsaletulum #tulum

Location





SELVA & Co.
COMERCIAL

MX 984 803 2058 / US 805 308 2900

www.selvacomercial.com