



**SELVA & Co.**  
COMERCIAL

[www.selvacomercial.com](http://www.selvacomercial.com)



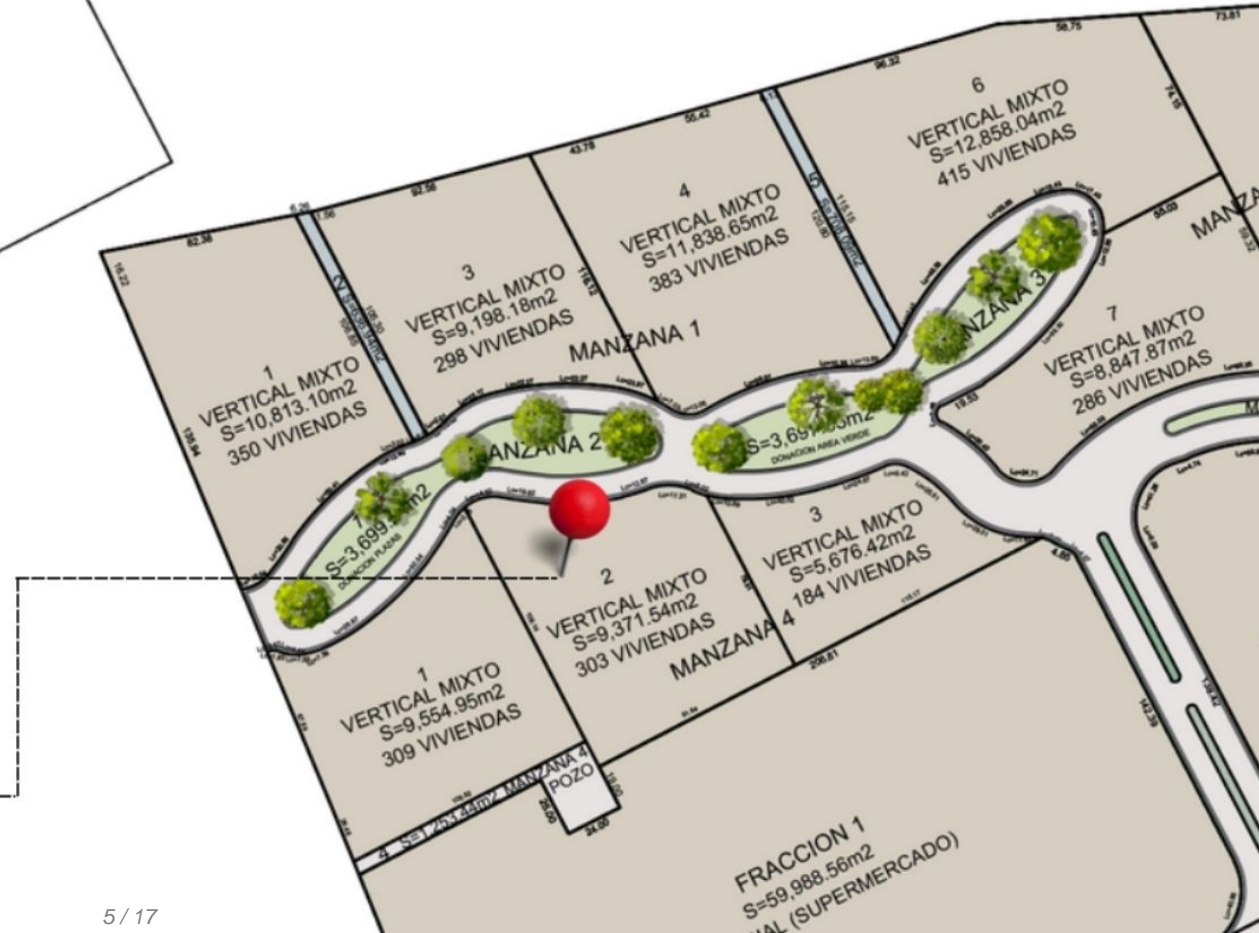
# Mixed-use vertical macrolot, 303 units, for sale, El Marqués, Querétaro

<i>ID: DLQR216-10</i>	<i>Location: Queretaro</i>
<i>Zone: El Marqués</i>	<i>Type: Land</i>
<i>Land: 9,372 m2 / 100,880.21 ft</i>	<i>Land ha: 0.94 ha / 2.32 ac</i>



An aerial photograph of a forest plot. A red polygon with a white border is overlaid on the image, indicating a specific area of interest. The text 'Superficie total: 9,371.54 m2' is centered within this polygon.

**Superficie total:  
9,371.54 m2**





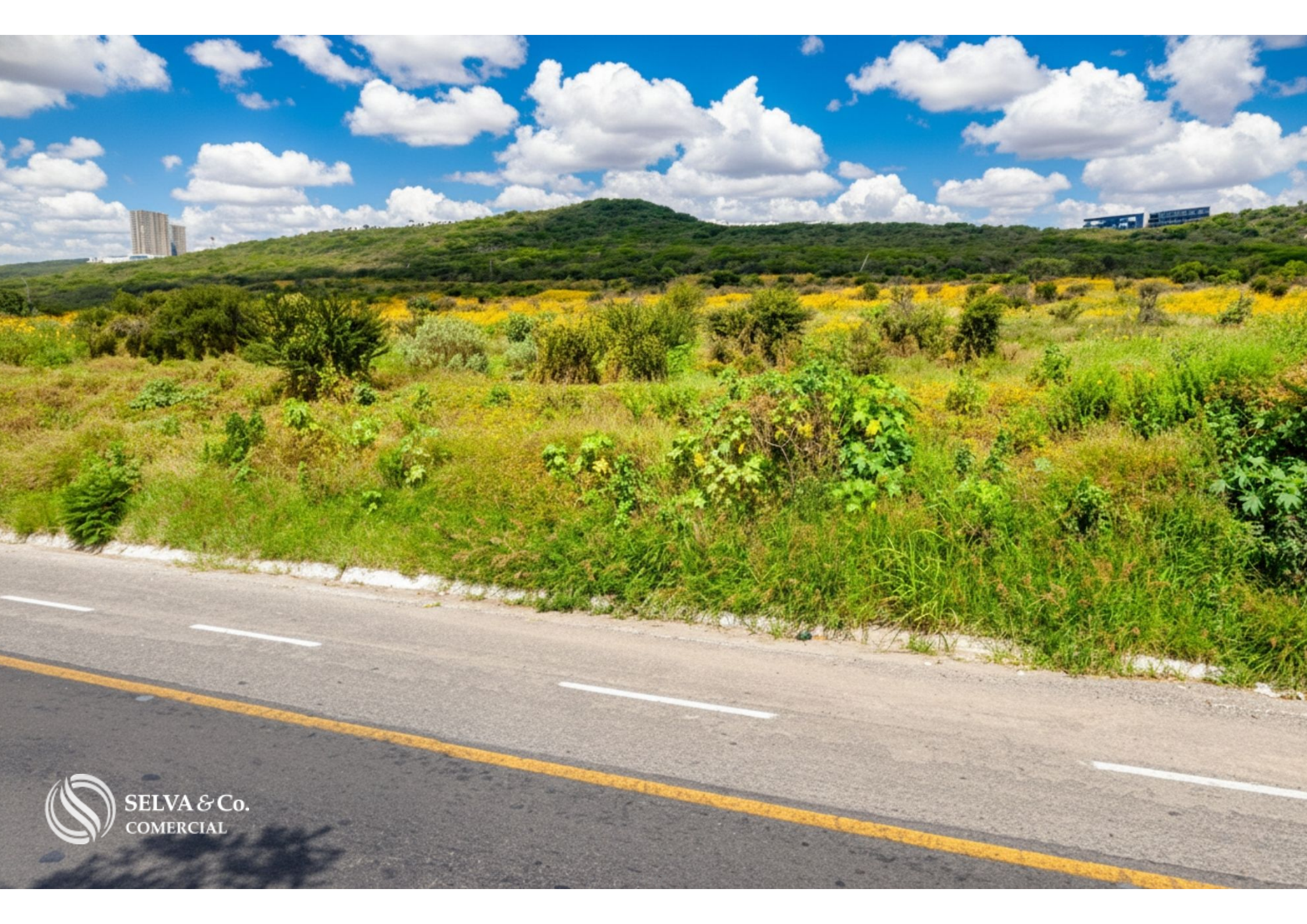
**H.E.B**

**GOLF**



**SELVA & Co.**  
**COMERCIAL**

**Cto. Universidades**





SELVA & Co. COMERCIAL

# Comunidad cerrada - *Gated community*



# Golf



**Alrededores - Surroundings**



# Santiago de Querétaro

**Golf**  
El Campanario

**Comunidad Cerrada**  
Gated Community

**H.E.B** →

**Comunidad de lujo**  
Luxury Community

**Golf**

**H.E.B** ↓

**Comunidad Cerrada**  
Gated Community

**Universidad**  
Anahuac →



## Description

DLQR216-10

Mixed-use vertical macrolot, 303 units, for sale, El Marqués, Querétaro

Macrolot for sale within a new urban center that will integrate corporate offices, medical services, shopping plazas, and educational institutions. Located in the municipality of El Marqués, in the area known as "Modern Querétaro," the region with the highest growth and influence in the city.

### LAND USE

Corporate offices

Commercial spaces

Entertainment areas

Horizontal and vertical residential developments

## NEARBY PLACES

Luxury developments

Golf course

Supermarkets such as H.E.B.

Schools

Shopping centers

## LOCATION

Macrolot for sale on Circuito Universidades, El Marqués, Querétaro, Mexico.

5 minutes from H.E.B. supermarket

10 minutes from the Golf Course

30 minutes from Downtown Querétaro

## PROPERTY STATUS

Title deed, legal certainty

## OFFICIAL PRICE

The official price of this property is 43,109,084 Pesos, prices in US dollars are provided as a reference. For purchase, the exchange rate of the day will be applied.

The images presented are for illustrative purposes and may differ from the final product in features and location.

Prices are subject to change without notice. Contact us to send you the price list and updated information.

Schedule your appointment to visit the area or call us to answer your questions.

# Location





**SELVA & Co.**  
**COMERCIAL**

MX 984 803 2058 / US 805 308 2900

[www.selvacomercial.com](http://www.selvacomercial.com)