



**SELVA & Co.**  
COMERCIAL

[www.selvacomercial.com](http://www.selvacomercial.com)



**Golf  
Juriquilla**

**Lago  
Juriquilla**

**Cumbres del Lago**



**10 hectáreas**

**Bordo  
"El Reventado"**

**Libramiento Norponiente**

# 10-Hectare Commercial Lot Facing Libramiento Norponiente, Juriquilla, Querétaro

<i>ID: BLQR222</i>	<i>Location: Queretaro</i>
<i>Zone: Juriquilla</i>	<i>Type: Land</i>
<i>Land: 100,000 m2 / 1,076,400.00 ft</i>	<i>Land ha: 10.00 ha / 24.71 ac</i>



Golf  
Juriquilla

Lago  
Juriquilla

Cumbres del Lago



10 hectáreas

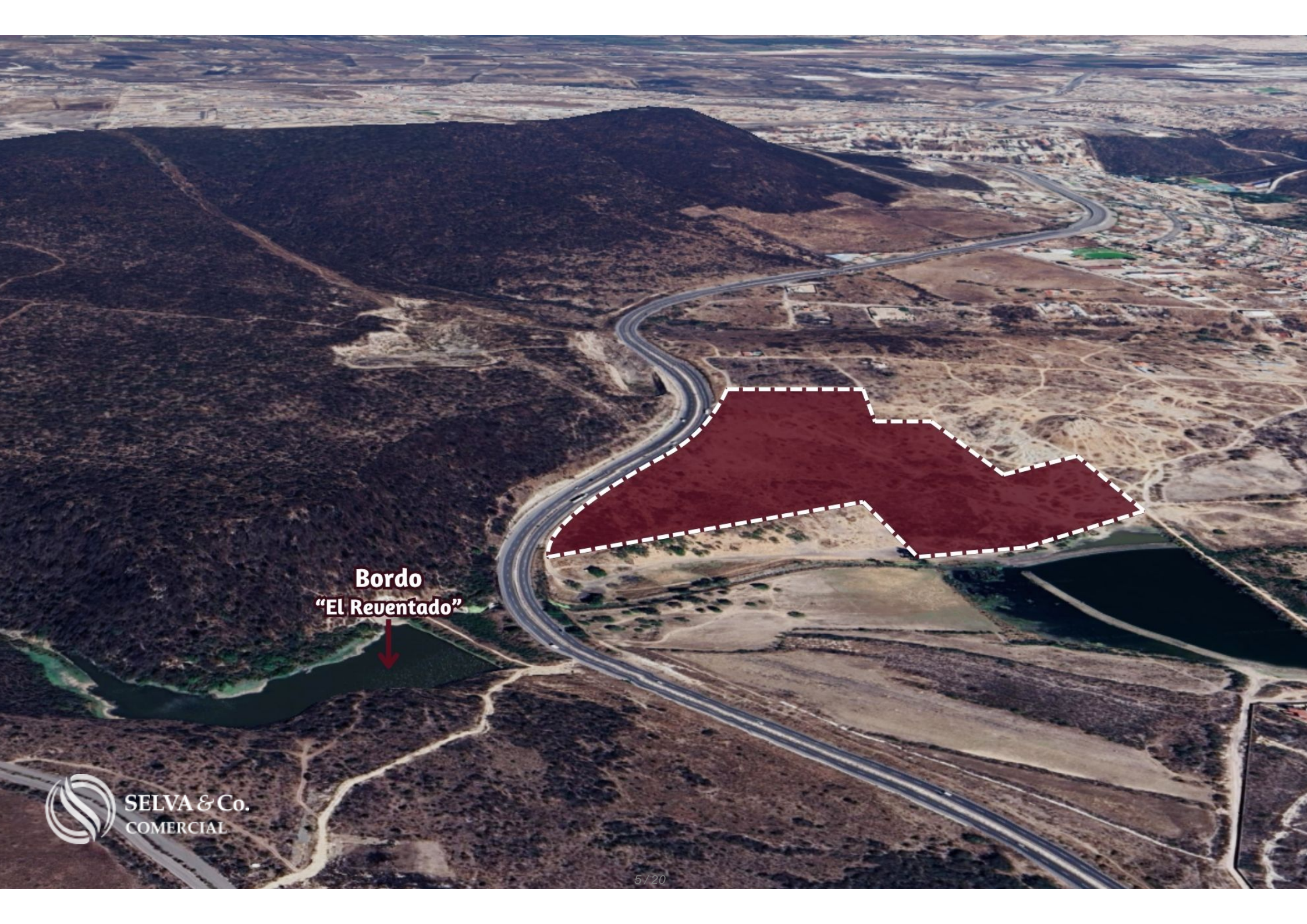
Bordo  
"El Reventado"

Libramiento Norponiente  
SELVA & Co.  
COMERCIAL



10 hectáreas

Libramiento Norponiente



**Bordo  
"El Reventado"**









# Campo de Golf Juriquilla



# Lago Juriquilla





**Centro comercial de Lujo**  
*Luxury Shoppingmall*

**Uptown Center**

**H.E.B**

**Jurica**

**Lago Juriquilla**

**Golf Juriquilla**

**Cumbres del Lago**



# Centro comercial - *Shopping mall*





# UpTown



STARBUCKS CO



 SELVA & Co.  
COMERCIAL  
**Uptown center**

# Juriquilla Santa Fe



## Description

BLQR222 JP

10-Hectare Commercial Lot Facing Libramiento Norponiente, Juriquilla, Querétaro

This lot boasts a prime location with over 400 meters of frontage along Libramiento Norponiente and an area for an access lane. It offers an exceptional view and extensive development potential ideal for commercial, residential, or vertical projects.

### LAND FEATURES

Land use: Commercial and services

COS: 40%

CUS: 9

Maximum height: 3 levels

Topography: Gentle slope

Frontage: 400 meters

Adjacent to a retention pond

## LOCATION

Commercial land for sale in Juriquilla, along Libramiento Norponiente in Querétaro, Mexico.

10 minutes from the Golf Course

15 minutes from H.E.B. Supermarket

15 minutes from the Luxury Shopping Center

## PROPERTY STATUS

Title deed, legal certainty

## OFFICIAL PRICE

The official price of this property is \$290,000,000 Pesos, prices in US dollars are

provided as a reference. For purchase, the exchange rate of the day will be applied.

The images presented are for illustrative purposes and may differ from the final product in features and location.

Prices are subject to change without notice. Contact us to send you updated information.

Schedule your appointment to visit the area or call us to answer your questions.

# Location





**SELVA & Co.**  
**COMERCIAL**

MX 984 803 2058 / US 805 308 2900

[www.selvacomercial.com](http://www.selvacomercial.com)