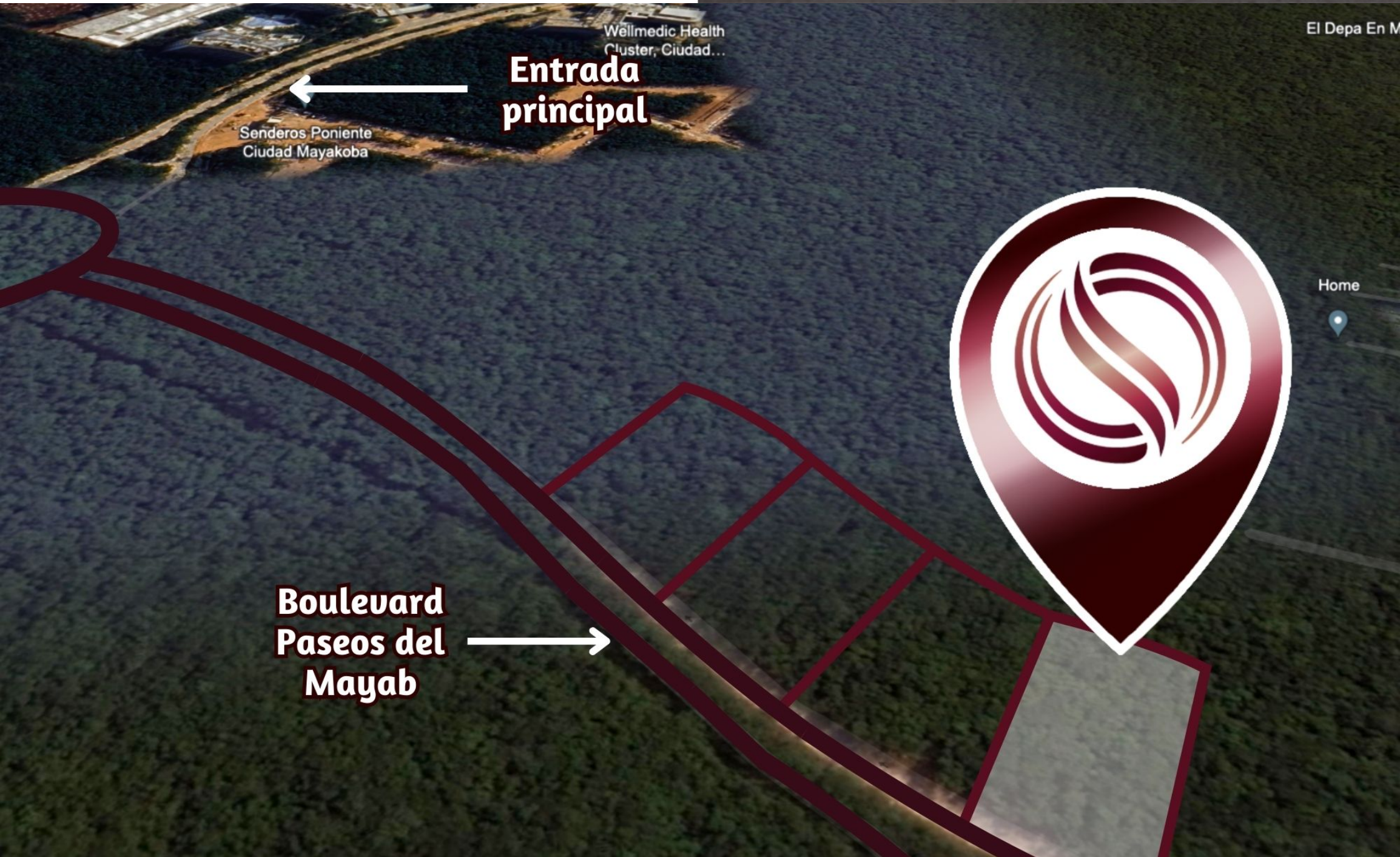




**SELVA & Co.**  
COMERCIAL

[www.selvacomercial.com](http://www.selvacomercial.com)



**Entrada principal**

Senderos Poniente  
Ciudad Mayakoba

Wellmedic Health  
Cluster, Ciudad...

**Boulevard  
Paseos del  
Mayab**

El Depa En M

Home

# Lot in gated community, for sale, Ciudad Mayakoba, Playa del Carmen

<i>ID: DLPC214-3</i>	<i>Location: Playa del Carmen</i>
<i>Zone: Ciudad Mayakoba</i>	<i>Type: Land</i>
<i>Land: 3,461 m2 / 37,254.20 ft</i>	<i>Land ha: 0.35 ha / 0.86 ac</i>

Wellmedic Health Cluster, Ciudad...

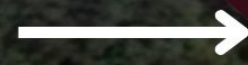
**Entrada principal**

Senderos Poniente Ciudad Mayakoba



Home

**Boulevard Paseos del Mayab**





BULEVAR PASEOS DEL MAYAB

14.30

15.01

33.94

CORREDOR BIOLÓGICO  
65.43

A= 3,460.77  
24 VIV

**LOTE 001**  
**MZA 15**

56.37

A= 2  
20

LOTE 001  
MZA 16

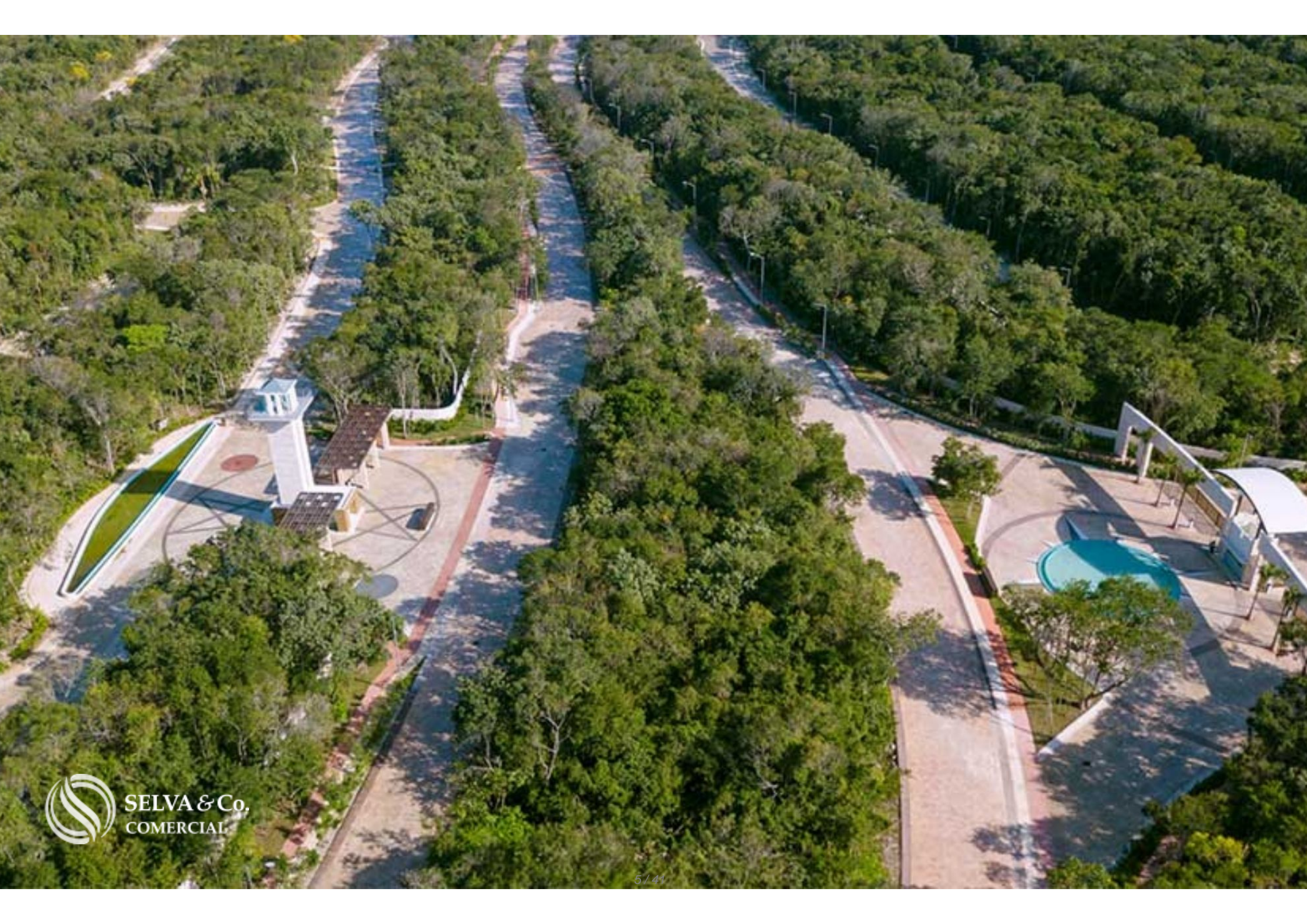
49.33

47.72



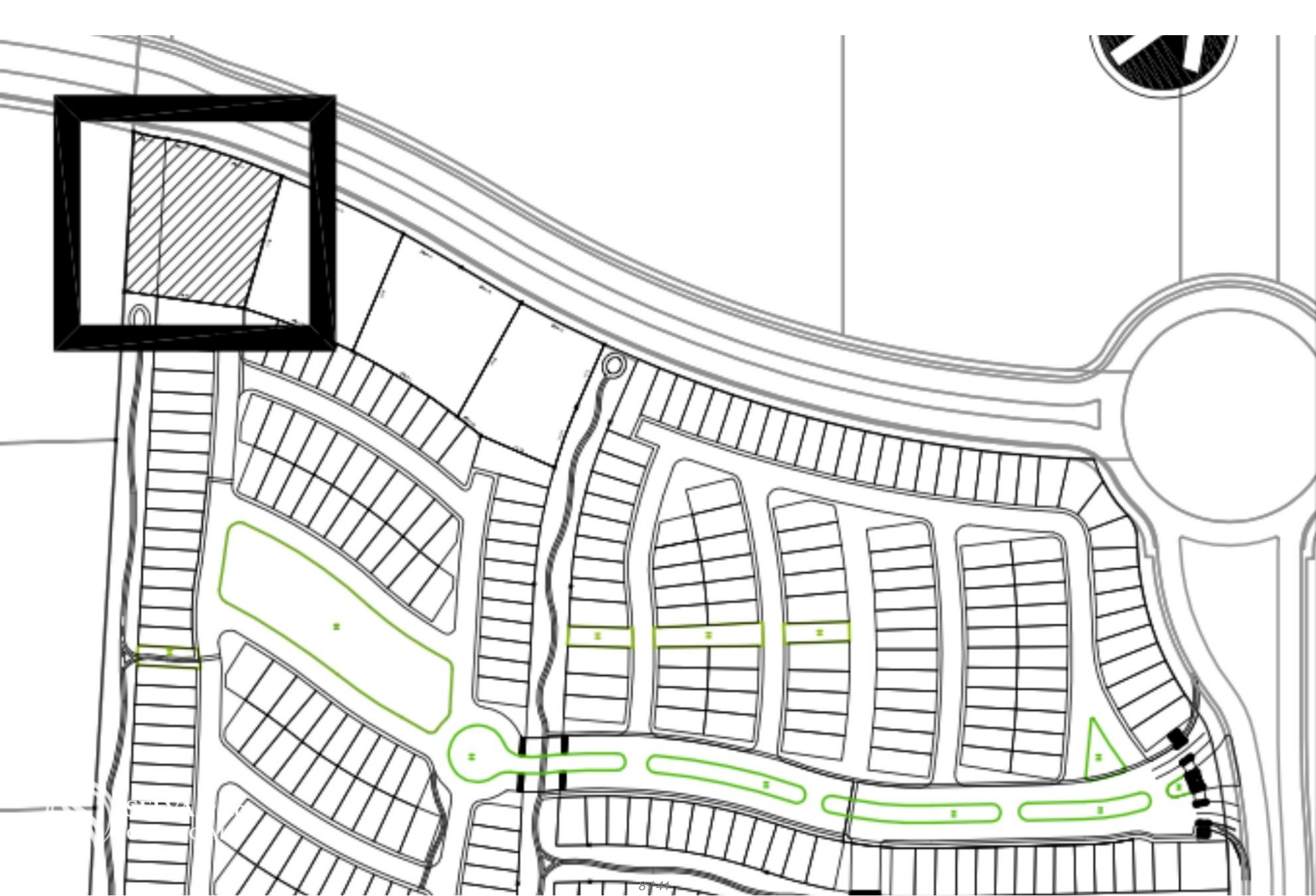
SENDERO

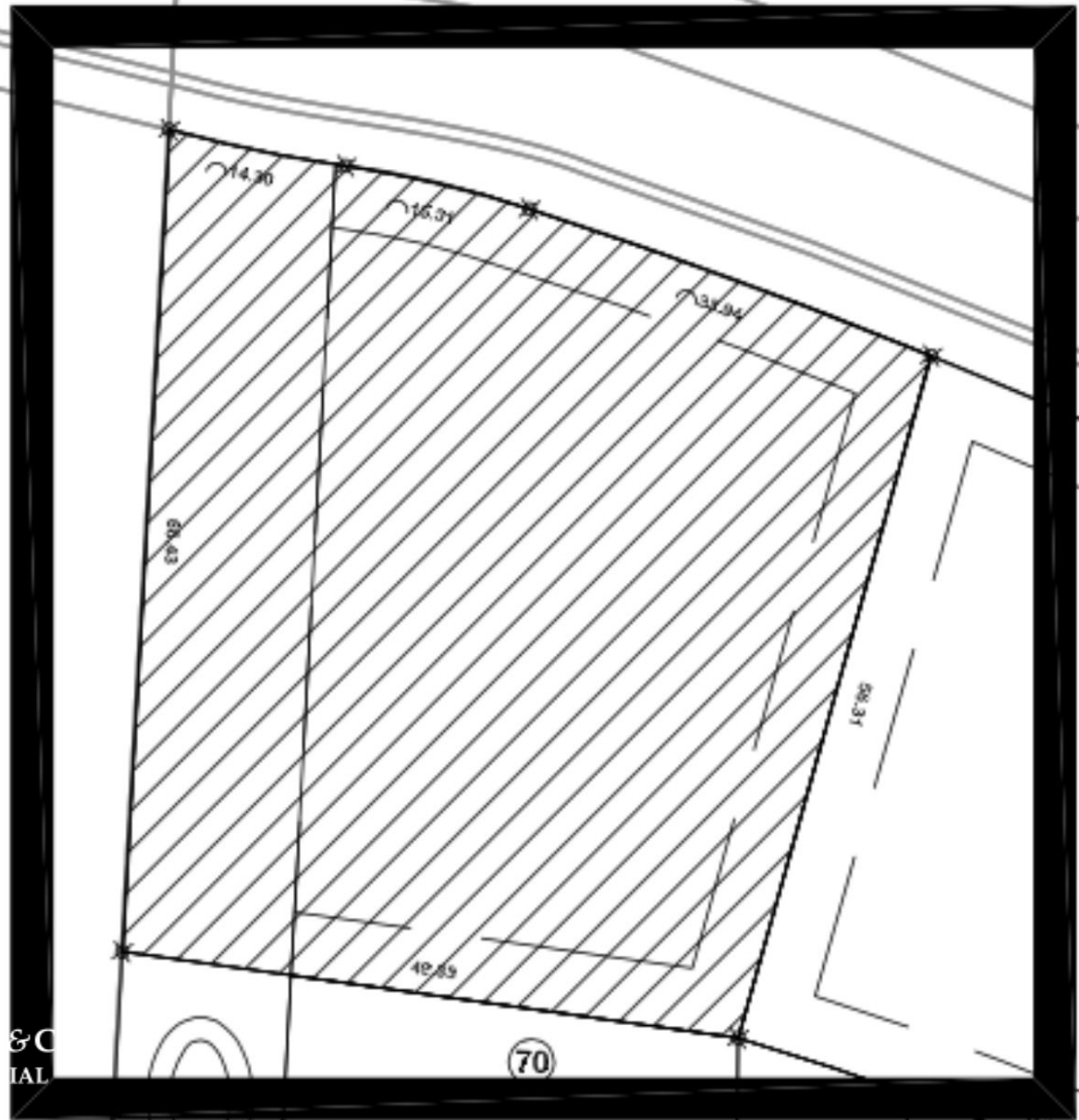
CONDOMINIO  
SENDEROS PONIENTE  
4/41





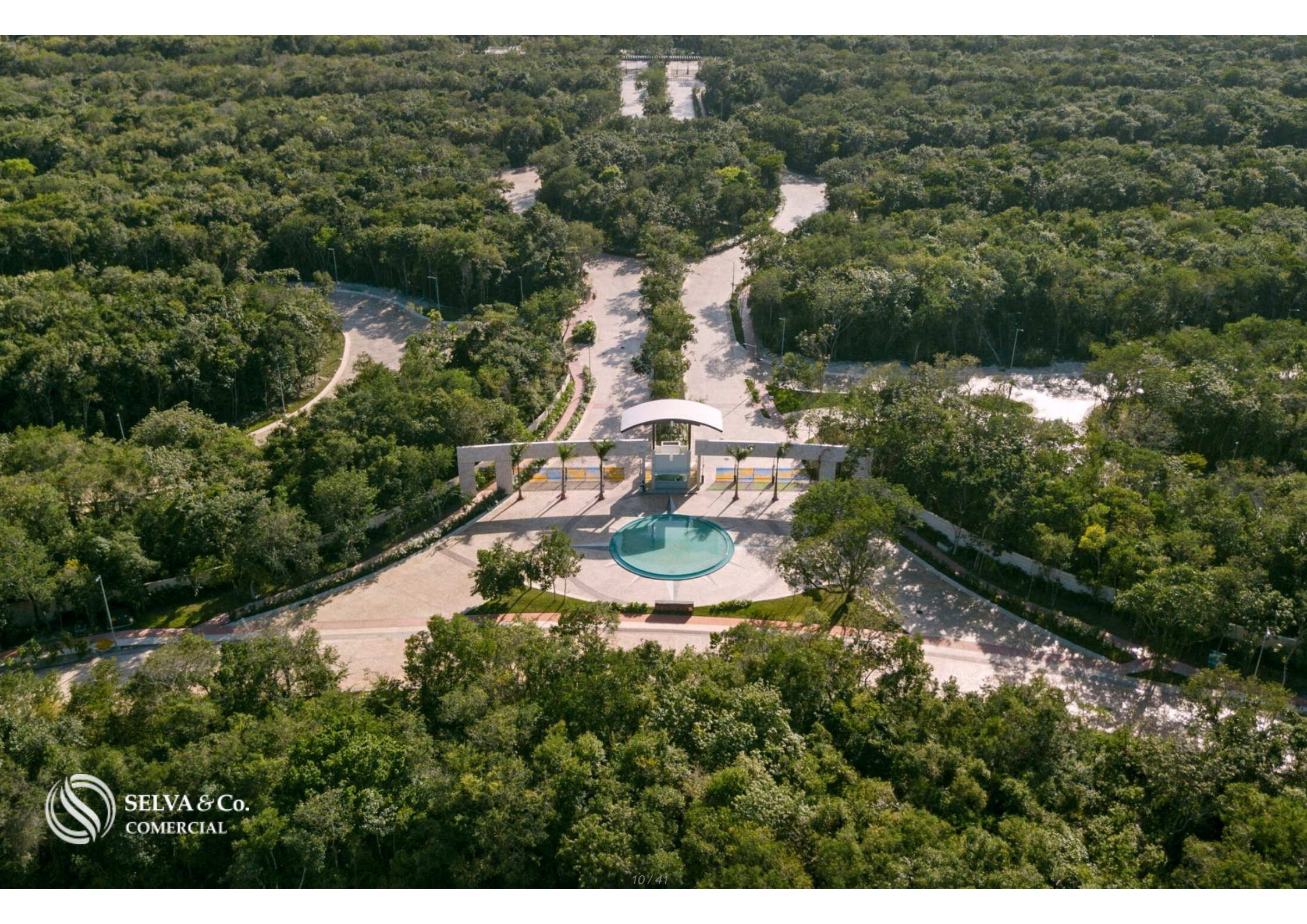


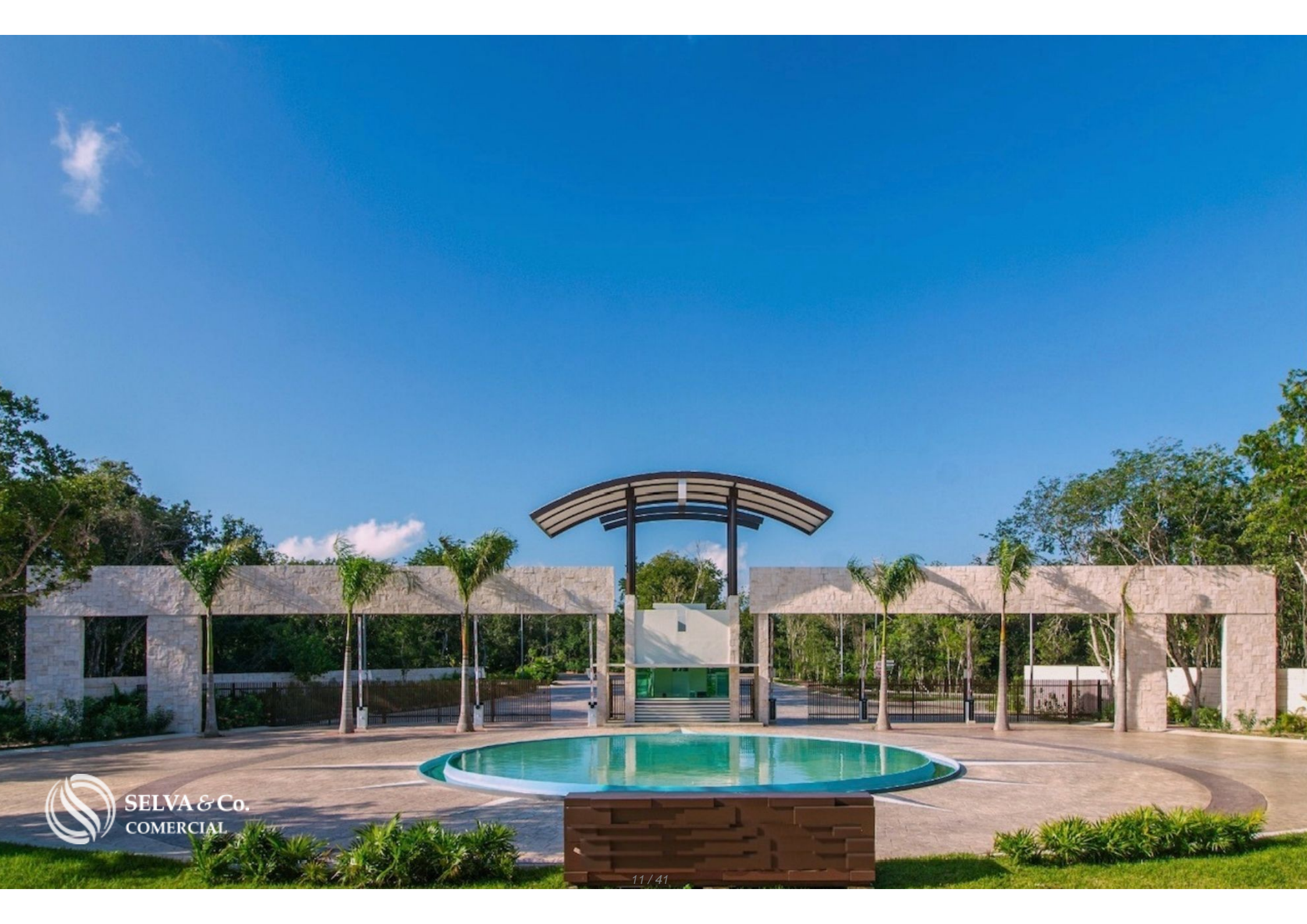




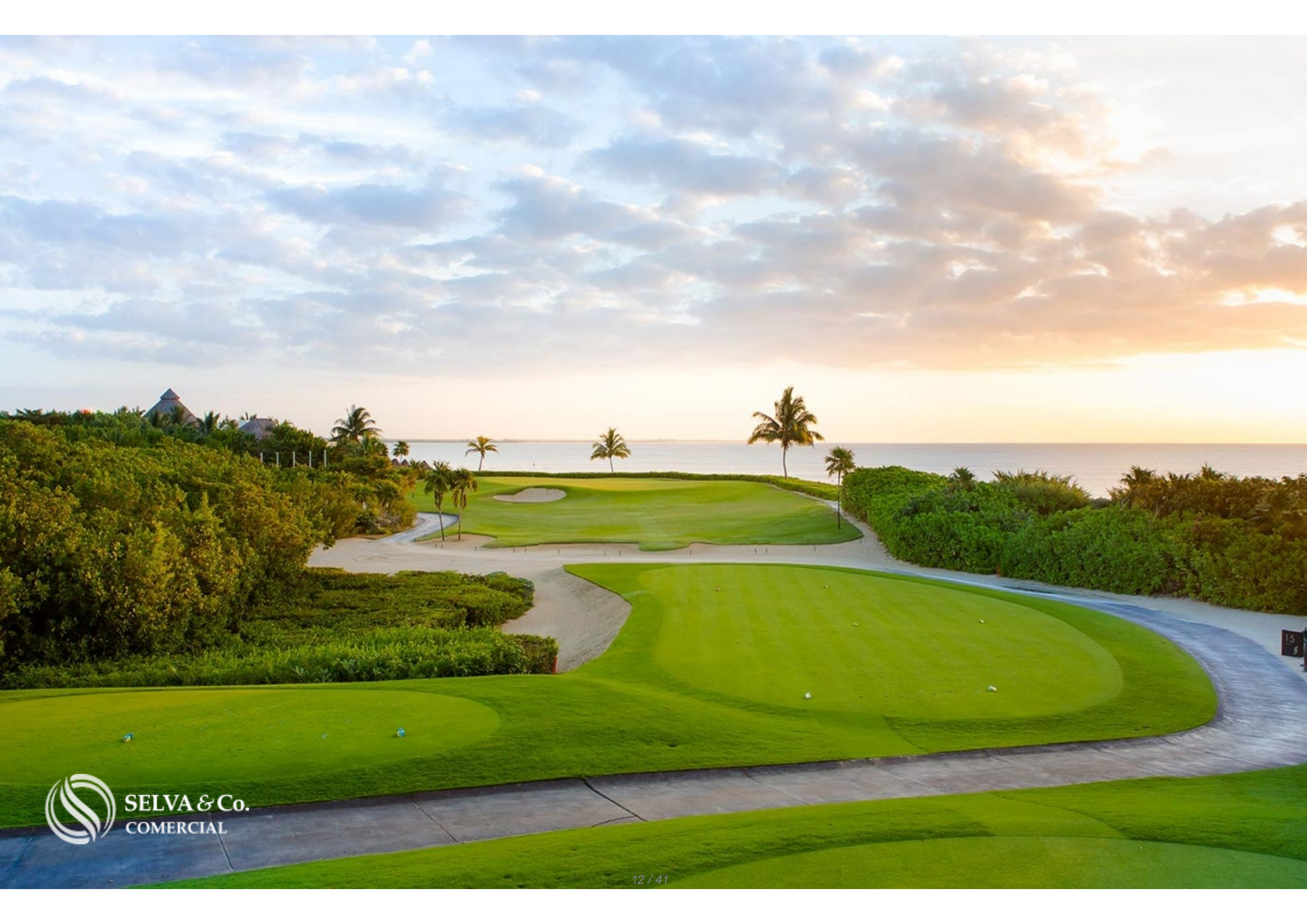
& C  
IAL

70





SELVA & Co.  
COMERCIAL





**Playa - Beach  
"Xcalacoco"**

**Gran Coyote Golf**

**Centro  
Downtown**

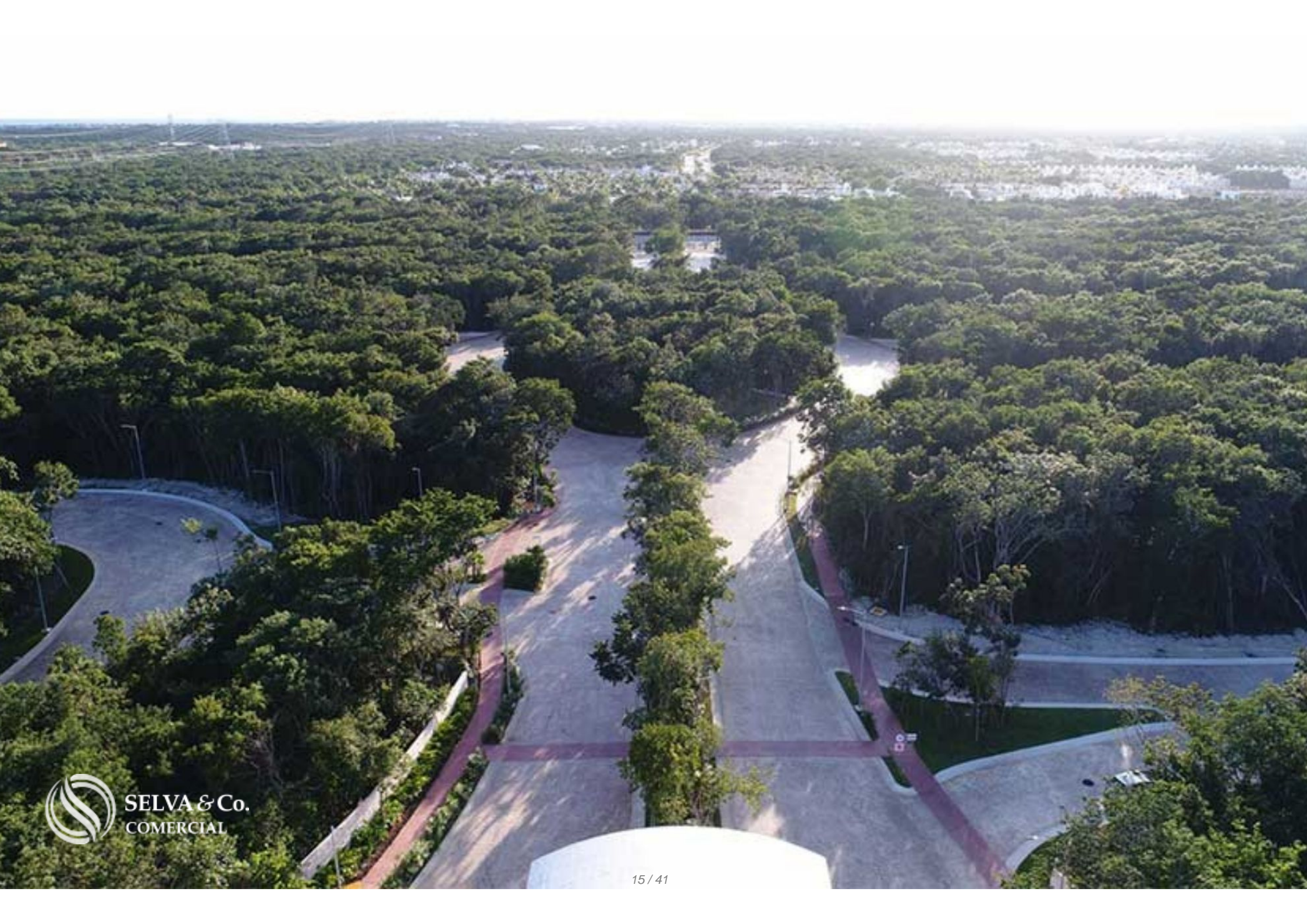
**Selvamar**

**Mayakoba Golf**



**TERRENO - LOT**







SELVA & Co.  
COMERCIAL



SELVA & Co.  
COMERCIAL



ciudad  
mayakoba

ciudad  
mayakoba



SELVA & Co.  
COMERCIAL



SELVA & Co.  
COMERCIAL







## *Actividades Mayakoba - Mayakoba Activities*



## *Actividades Mayakoba - Mayakoba Activities*



# Golf Mayakoba



# *Golf Mayakoba*



## Actividades Mayakoba - Mayakoba Activities



# *Pueblito Mayakoba*



## *Actividades Mayakoba - Mayakoba Activities*



# *Club de Playa Mayakoba - Mayakoba Beach club*



## *Actividades Mayakoba - Mayakoba Activities*



# Actividades Mayakoba - Mayakoba Activities



# Golf Mayakoba



# Golf Mayakoba



## Description

DLPC214-3

Lot in gated community, for sale, Ciudad Mayakoba, Playa del Carmen

Multifamily land, in a responsible planned and sustainable community.

Urbanized land with all services and ready for delivery. You can start the project immediately and apply for a building permit.

This community is committed on environmental care and the quality of life for residents.

LAND FEATURES

COS: 50%

CUS: 2.0

Height: 24 meters

Levels: 6

## THE RESIDENTIAL COMMUNITY IN NUMBERS

24 km of bike paths

10 hectares of park

134 hectares of natural conservation

27 km of walking trails

25 wildlife crossings

## EXTENTION OF THE COMMUNITY

409 hectares, of which 30% is natural reserve.

## RESIDENTIAL AMENITIES

Bike paths

Walking trails

Biological paths for wildlife passage

Large green areas

Sports facilities

Large park

Medical center with clinic

Commercial village

Chapel

## LOCATION

Multifamily land located in a gated community, in Playa del Carmen, Quintana Roo, México.

17 minutes from La Quinta Avenida.

37 minutes to Cancun International Airport.

## PROPERTY STATUS

Property title, legal certainty.

## OFFICIAL PRICE

The official price of this property is 22,495,005 Pesos, prices in US dollars are provided as a reference. For purchase, the exchange rate of the day will be applied.

The images used for this advertisement are from the general project and do not correspond to any particular plot of land.

The images presented are for illustrative purposes and may differ from the final product in features and location.

Prices are subject to change without notice. Contact us to send you the price list and updated information.

Schedule your appointment to visit the area or call us to answer your questions.



# Location





**SELVA & Co.**  
**COMERCIAL**

MX 984 803 2058 / US 805 308 2900  
[www.selvacomercial.com](http://www.selvacomercial.com)