



SELVA & Co.
COMERCIAL

www.selvacomercial.com



Entrada principal

Senderos Poniente
Ciudad Mayakoba

Wellmedic Health
Cluster, Ciudad...

**Boulevard
Paseos del
Mayab**

El Depa En M

Home

Multifamily macrolot with amenities, for sale, Ciudad Mayakoba, Playa del Carmen

<i>ID: DLPC214-2</i>	<i>Location: Playa del Carmen</i>
<i>Zone: Ciudad Mayakoba</i>	<i>Type: Land</i>
<i>Land: 2,770 m2 / 29,816.28 ft</i>	<i>Land ha: 0.28 ha / 0.68 ac</i>

Wellmedic Health
Cluster, Ciudad...

**Entrada
principal**

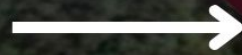
Senderos Poniente
Ciudad Mayakoba

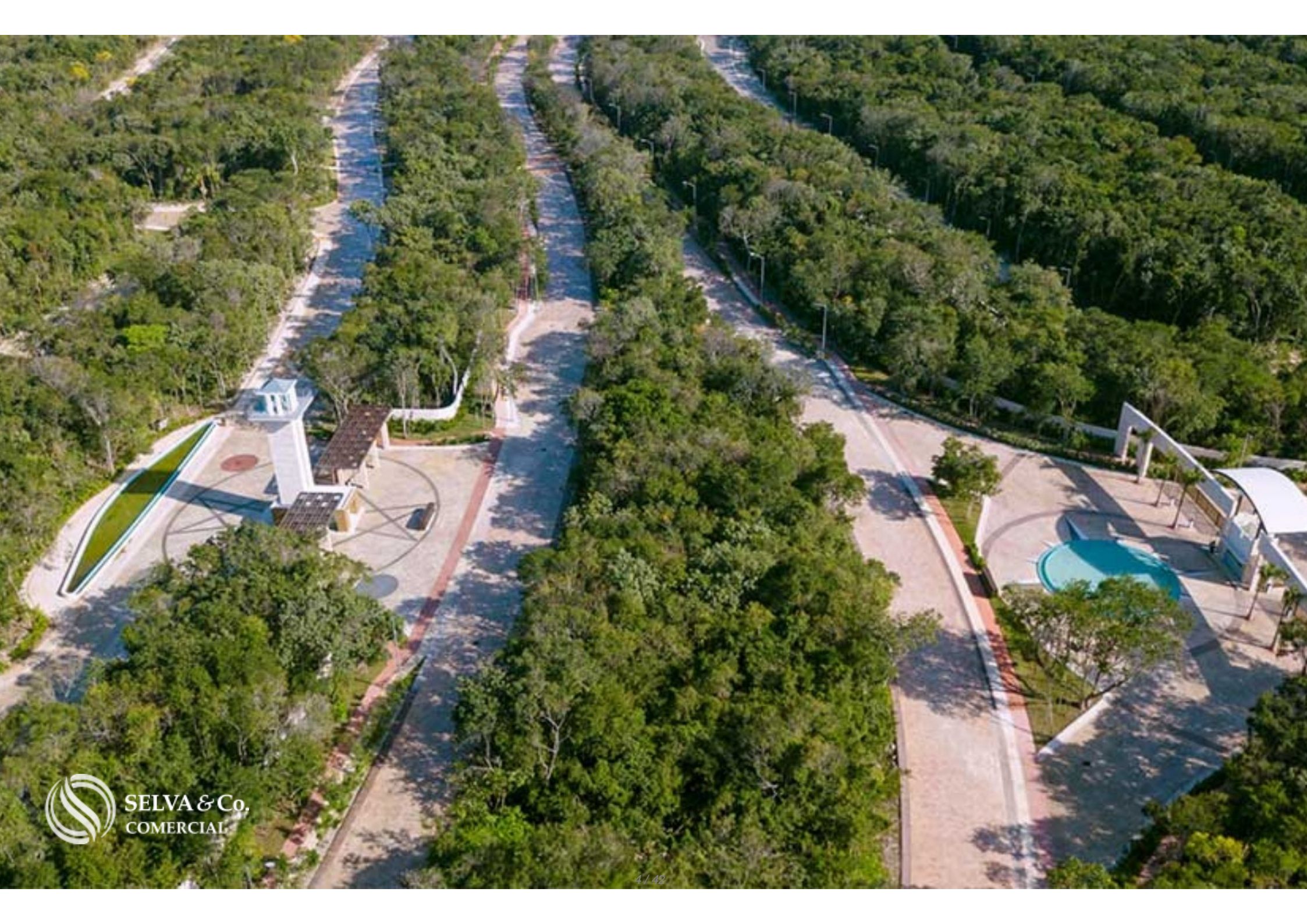


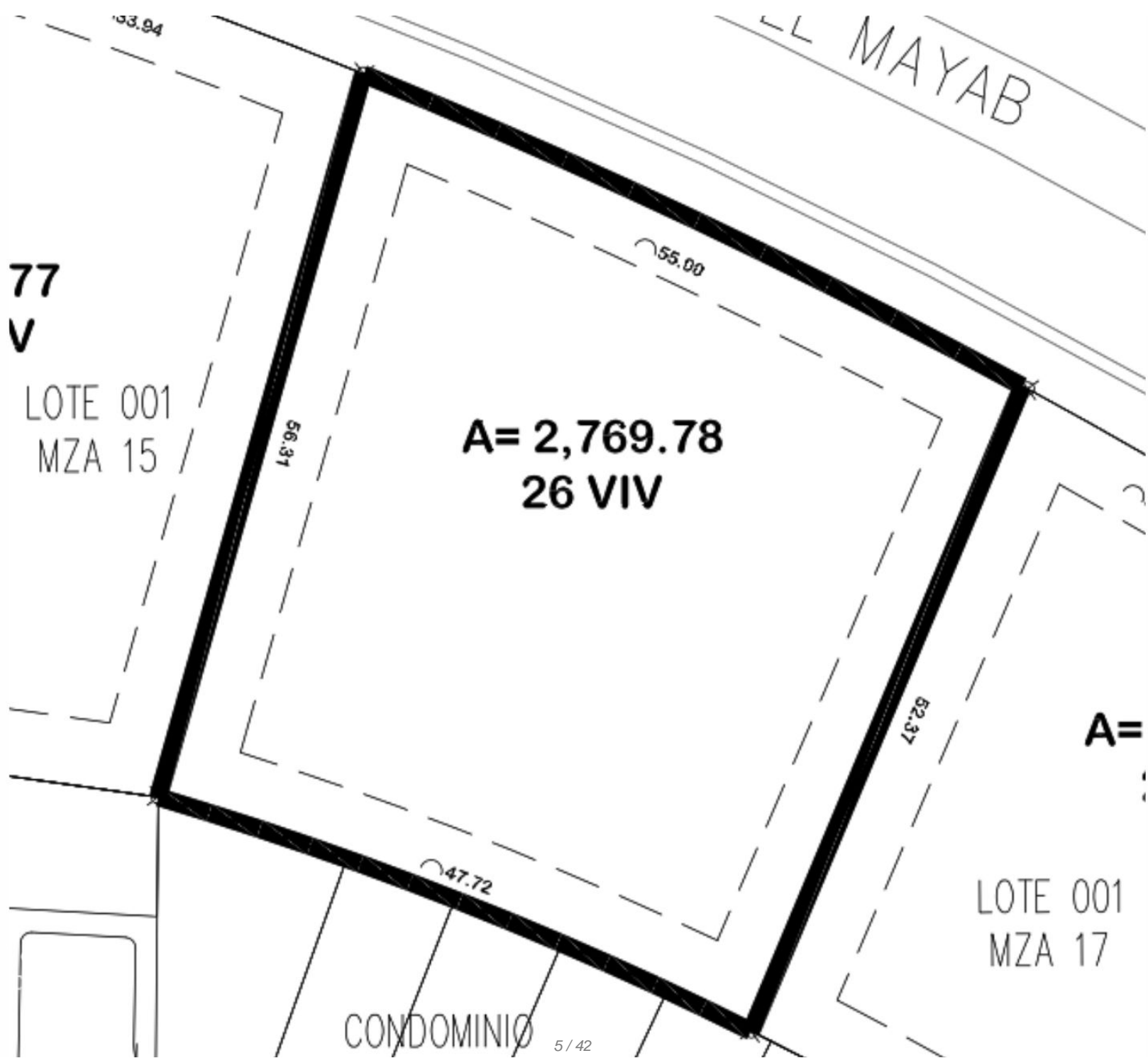
Home



**Boulevard
Paseos del
Mayab**







77
V

LOTE 001
MZA 15

A= 2,769.78
26 VIV

A=

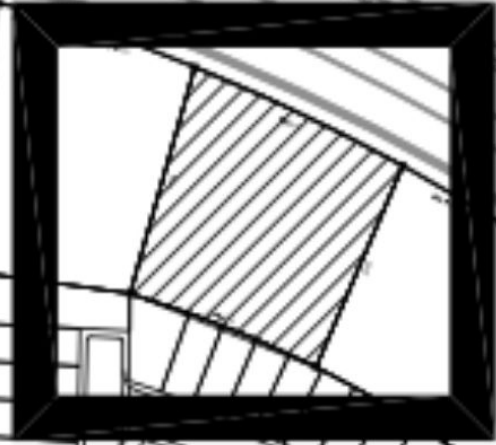
LOTE 001
MZA 17

CONDOMINIO 5 / 42



SELVA & Co.
COMERCIAL





66.43

75.01

73.84

75.01

73.31

42.33

72.37

72.37

70

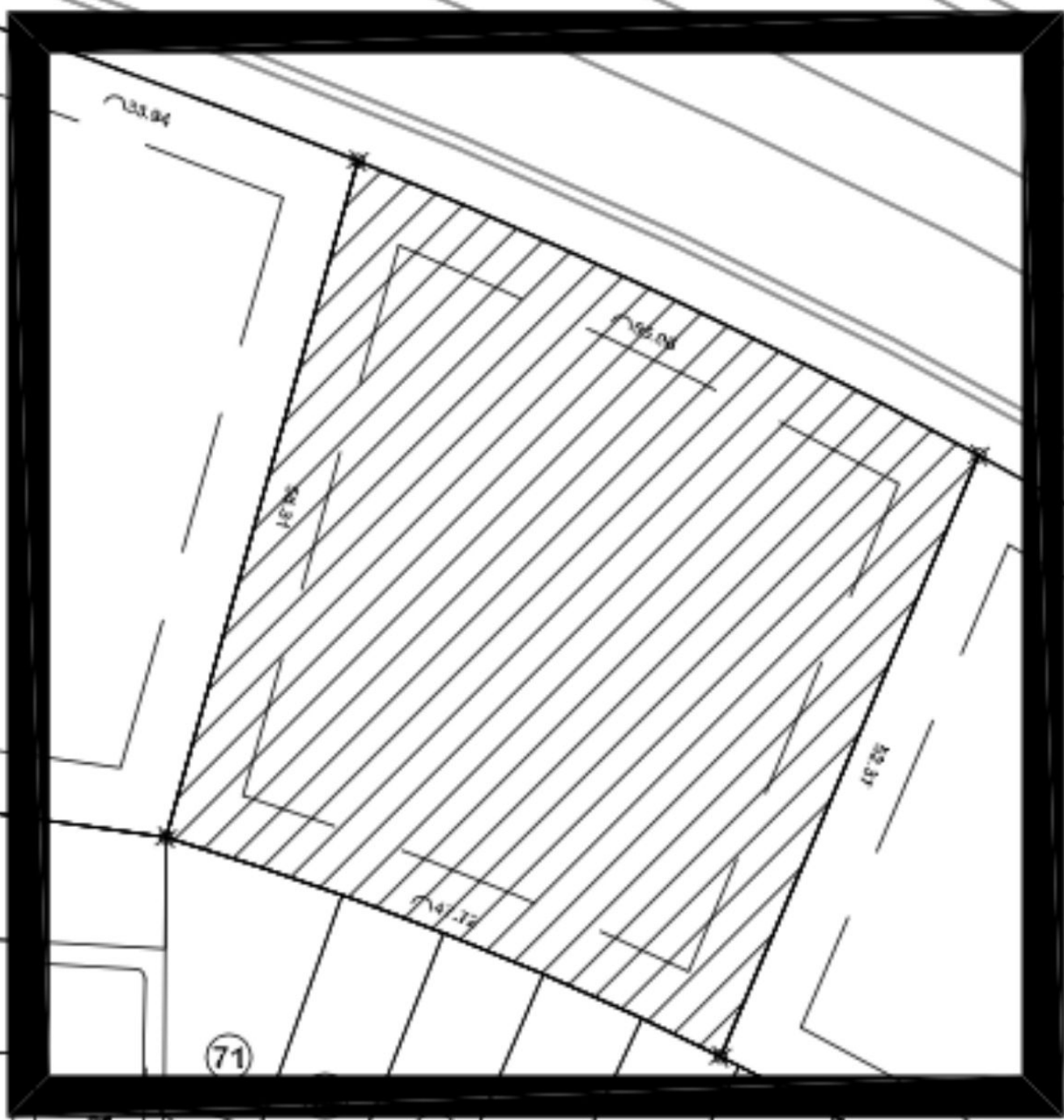
69

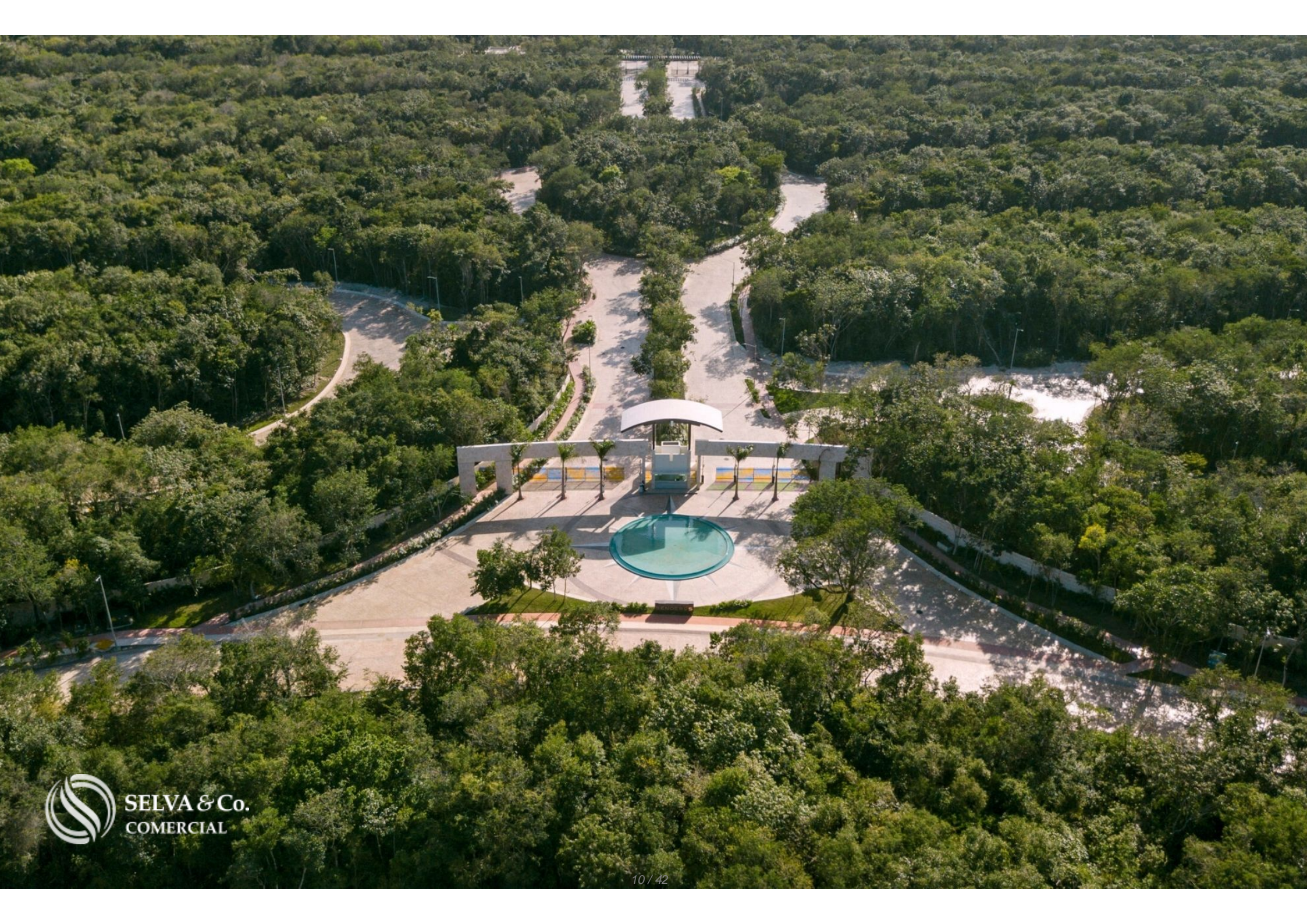
68

71

73

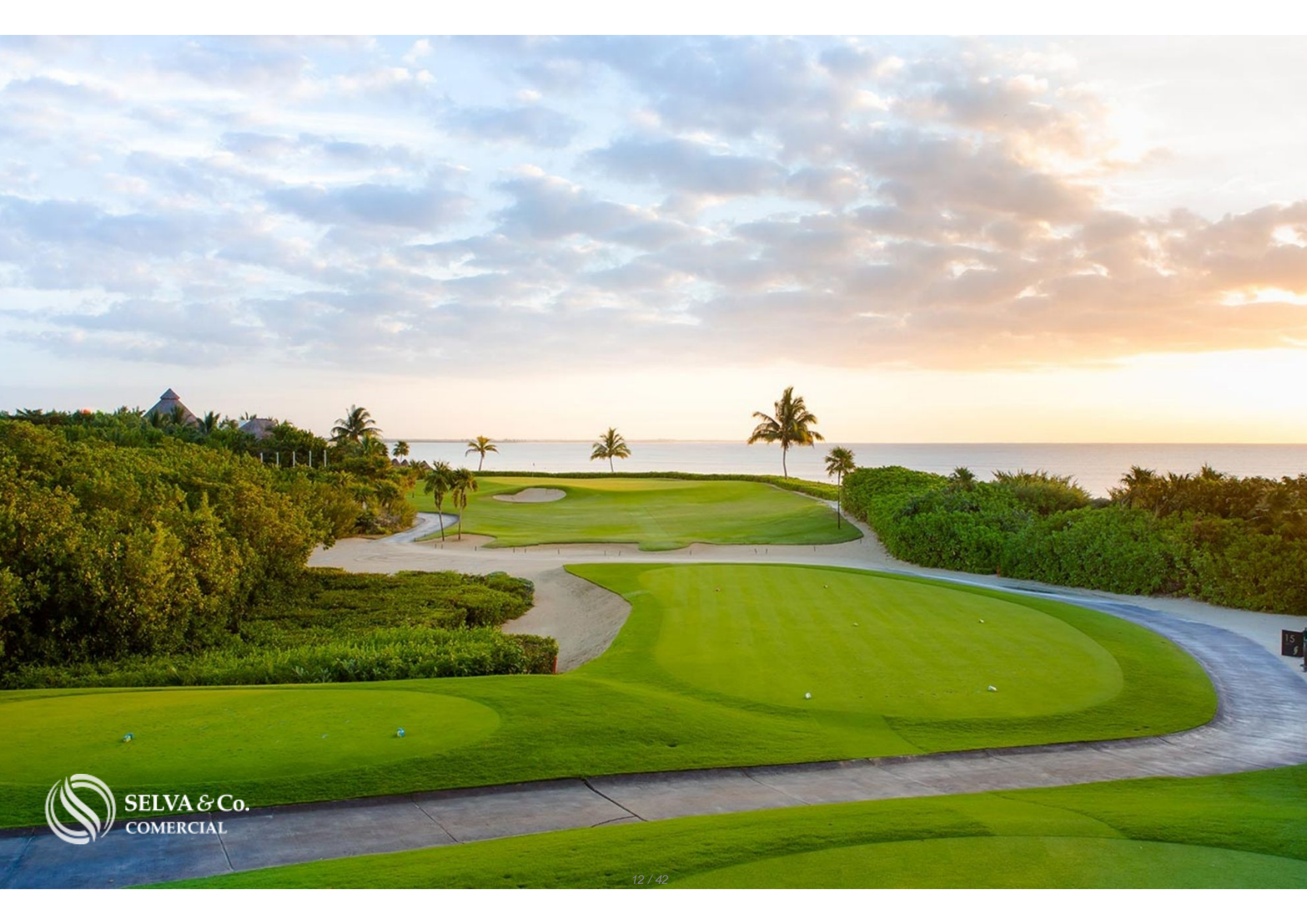
74







SELVA & Co.
COMERCIAL





**Playa - Beach
"Xcalacoco"**

Gran Coyote Golf

**Centro
Downtown**

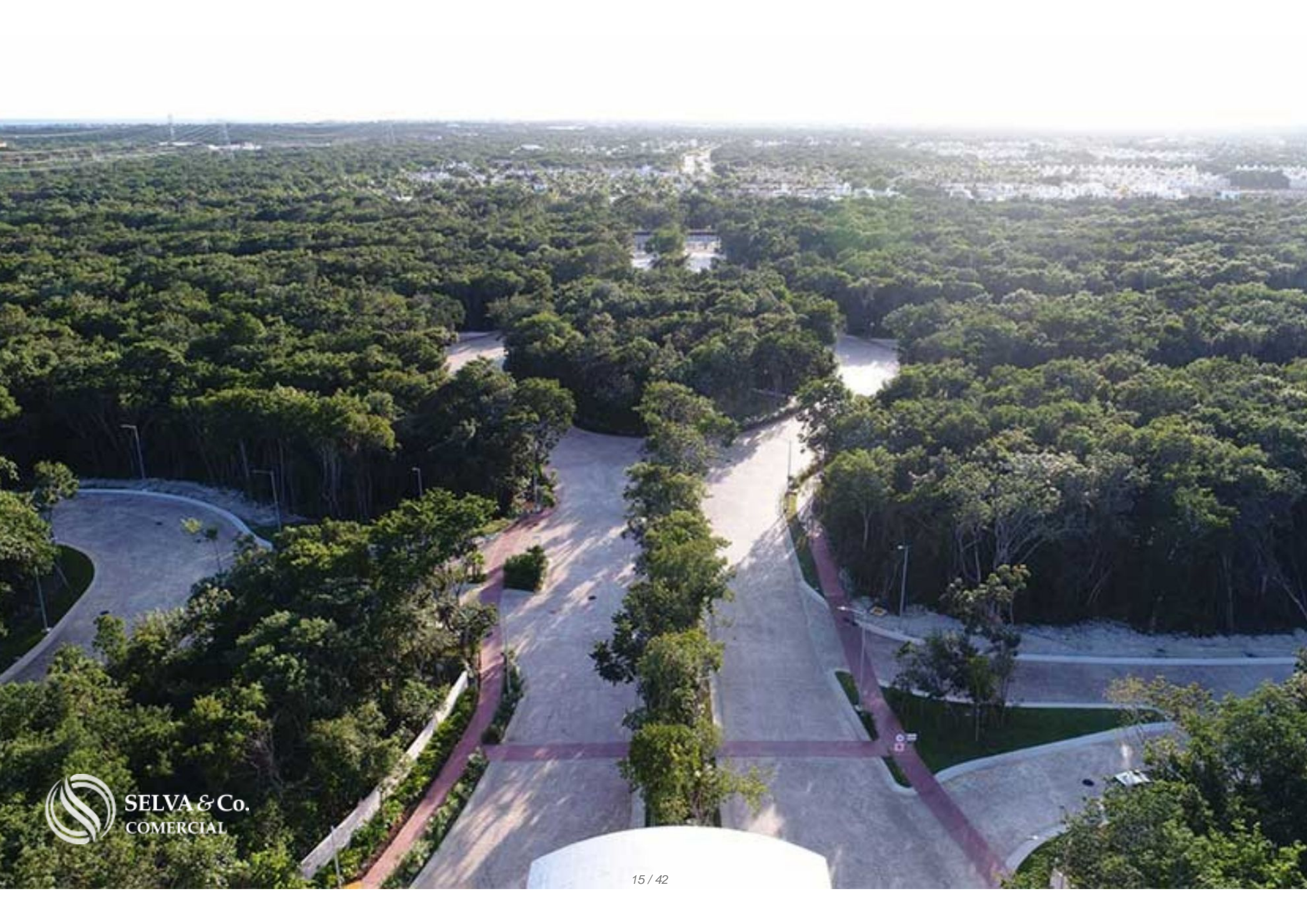
Selvamar

Mayakoba Golf



TERRENO - LOT







SELVA & Co.
COMERCIAL



SELVA & Co.
COMERCIAL



ciudad
mayakoba

ciudad
mayakoba



SELVA & Co.
COMERCIAL



SELVA & Co.
COMERCIAL







Actividades Mayakoba - Mayakoba Activities



Actividades Mayakoba - Mayakoba Activities



Actividades Mayakoba - Mayakoba Activities



Golf Mayakoba



Golf Mayakoba



Actividades Mayakoba - Mayakoba Activities



Pueblito Mayakoba



Actividades Mayakoba - Mayakoba Activities



Club de Playa Mayakoba - Mayakoba Beach club



Actividades Mayakoba - Mayakoba Activities



Actividades Mayakoba - Mayakoba Activities



Golf Mayakoba



Golf Mayakoba



Description

DLPC214-2

Multifamily macrolot with amenities, for sale, Ciudad Mayakoba, Playa del Carmen

Multifamily land, in a responsible planned and sustainable community.

Urbanized land with all services and ready for delivery. You can start the project immediately and apply for a building permit.

This community is committed on environmental care and the quality of life for residents.

LAND FEATURES

COS: 50%

CUS: 2.0

Height: 24 meters

Levels: 6

THE RESIDENTIAL COMMUNITY IN NUMBERS

24 km of bike paths

10 hectares of park

134 hectares of natural conservation

27 km of walking trails

25 wildlife crossings

EXTENTION OF THE COMMUNITY

409 hectares, of which 30% is natural reserve.

RESIDENTIAL AMENITIES

Bike paths

Walking trails

Biological paths for wildlife passage

Large green areas

Sports facilities

Large park

Medical center with clinic

Commercial village

Chapel

LOCATION

Multifamily land located in a gated community, in Playa del Carmen, Quintana Roo, México.

17 minutes from La Quinta Avenida.

37 minutes to Cancun International Airport.

PROPERTY STATUS

Property title, legal certainty.

OFFICIAL PRICE

The official price of this property is 18,003,570 Pesos, prices in US dollars are provided as a reference. For purchase, the exchange rate of the day will be applied.

The images used for this advertisement are from the general project and do not correspond to any particular plot of land.

The images presented are for illustrative purposes and may differ from the final product in features and location.

Prices are subject to change without notice. Contact us to send you the price list and updated information.

Schedule your appointment to visit the area or call us to answer your questions.

Location





SELVA & Co.
COMERCIAL

MX 984 803 2058 / US 805 308 2900

www.selvacomercial.com