



**SELVA & Co.**  
COMERCIAL

[www.selvacomercial.com](http://www.selvacomercial.com)



**6,817.76 m2**

# Multifamily Lot in a Private Community for Sale, Playa del Carmen.

<i>ID: ALPC214-2</i>	<i>Location: Playa del Carmen</i>
<i>Zone: Ciudad Mayakoba</i>	<i>Type: Land</i>
<i>Land: 2,753 m2 / 29,633.29 ft</i>	<i>Land ha: 0.28 ha / 0.68 ac</i>



**6,817.76 m2**





**AP:** Agua Potable  
**DS:** Drenaje Sanitario  
**EE:** Energía Eléctrica  
**VD:** Voz y Datos

SENDERO ECUADOR CONDOMINIO

SENDEROS PONIENTE

# LOTE 001 MZA 007

A= 6,817.76  
59 VIV

CONDOMINIO  
SENDEROS PONIENTE

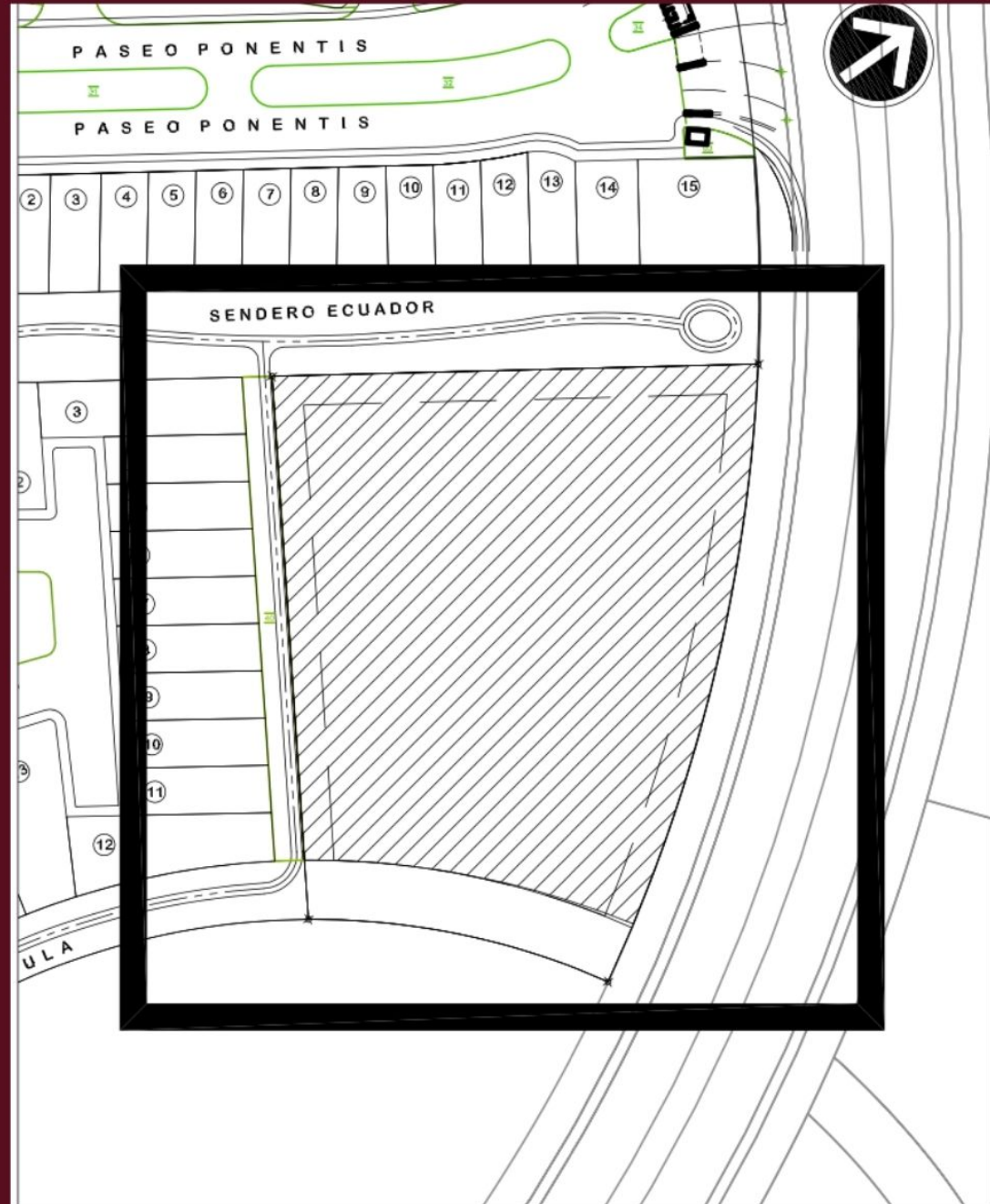
BULEVAR J. M. VILLAR MIR

CORREDOR BIOLÓGICO

LOTE 14  
CD MAYAKOBA



LOCALIZACIÓN GENERAL



LOCALIZACIÓN LOTE



 SELVA & Co.  
COMERCIAL







SELVA & Co.  
COMERCIAL



SELVA & Co.  
COMERCIAL



**Centro  
Downtown**

**Supermercado  
Supermarket**



**Playa - Beach  
"Punta  
Esmeralda"**

**Playa - Beach  
"Xcalacoco"**

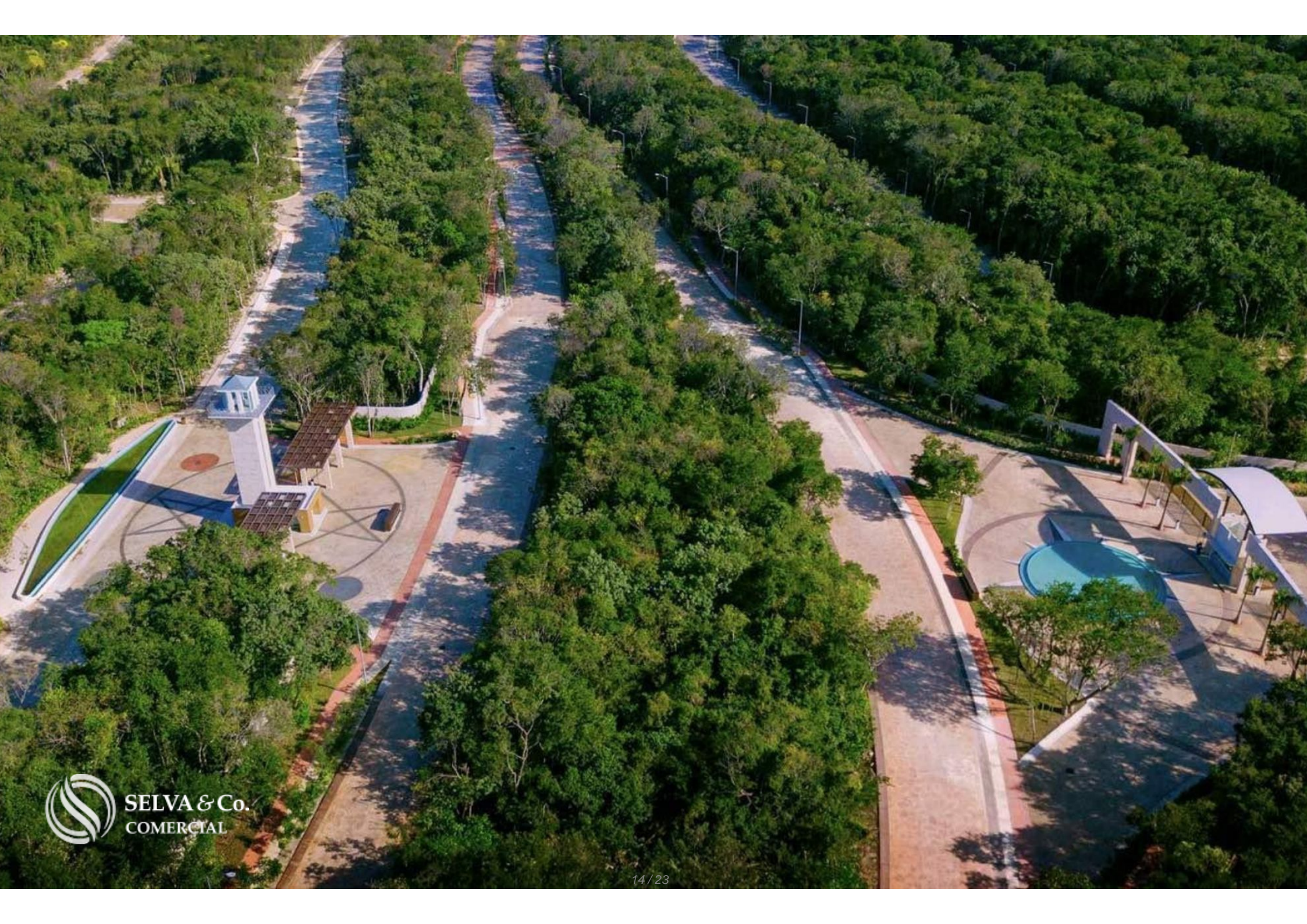
**Playa - Beach  
"Punto uno"**

**Golf**

**Golf  
Ciudad Mayakoba**

**TERRENO  
LOT**











## Description

ALPC214-2

Multifamily Lot in a Private Community for Sale, Playa del Carmen.

Multifamily land located in one of the most prestigious and ecological communities of Playa del Carmen. Ideal for developers looking to build luxury residences or high-yield rental units.

Urbanized macrolot with utilities in place ready to build.

### COMMUNITY SIZE & CONSERVATION AREAS

Total Area: 409 hectares

Natural Reserve: 30% of the community

Conservation Area: 134 hectares

Urban Green Parklands: 10 hectares

Bike Paths: 24 km

Walking Trails: 27 km

Wildlife Crossings: 25 designated points

## AMENITIES & INFRASTRUCTURE

24/7 Gated Security

Bike and walking trails

Biological corridors for wildlife

Large urban green spaces

Exclusive beach club access

Medical center with clinic

Commercial village

Community chapel

Sports areas and outdoor recreation

## LOCATION

Multifamily land for sale in Senderos Poniente Mayakoba, Playa del Carmen, Quintana Roo, Mexico.

10 minutes from the nearest supermarket

20 minutes from Playa del Carmen's famous Fifth Avenue

10 minutes from "El Camaleón" Mayakoba Golf Course

## PROPERTY STATUS

Ready to build immediately with legal title and full legal certainty.

## OFFICIAL PRICE

The official price of this property is 17,892,615 pesos, prices in US dollars are provided as a reference. For purchase, the exchange rate of the day will be applied.

The images presented are for illustrative purposes and may differ from the final product in features and location.

Prices are subject to change without notice. Contact us to send you the price list and updated information.

Schedule your appointment to visit the area or call us to answer your questions.

# Location





**SELVA & Co.**  
**COMERCIAL**

MX 984 803 2058 / US 805 308 2900  
[www.selvacomercial.com](http://www.selvacomercial.com)