



SELVA & Co.
COMERCIAL

www.selvacomercial.com



Multifamily Land in a Private Community for Sale, Playa del Carmen.

<i>ID: ALPC214-1</i>	<i>Location: Playa del Carmen</i>
<i>Zone: Ciudad Mayakoba</i>	<i>Type: Land</i>
<i>Land: 6,818 m2 / 73,388.95 ft</i>	<i>Land ha: 0.68 ha / 1.68 ac</i>





6,817.76 m²



AP: Agua Potable
DS: Drenaje Sanitario
EE: Energía Eléctrica
VD: Voz y Datos

SENDERO ECUADOR CONDOMINIO

SENDEROS PONIENTE

LOTE 001 MZA 007

A= 6,817.76
59 VIV

CONDOMINIO
SENDEROS PONIENTE

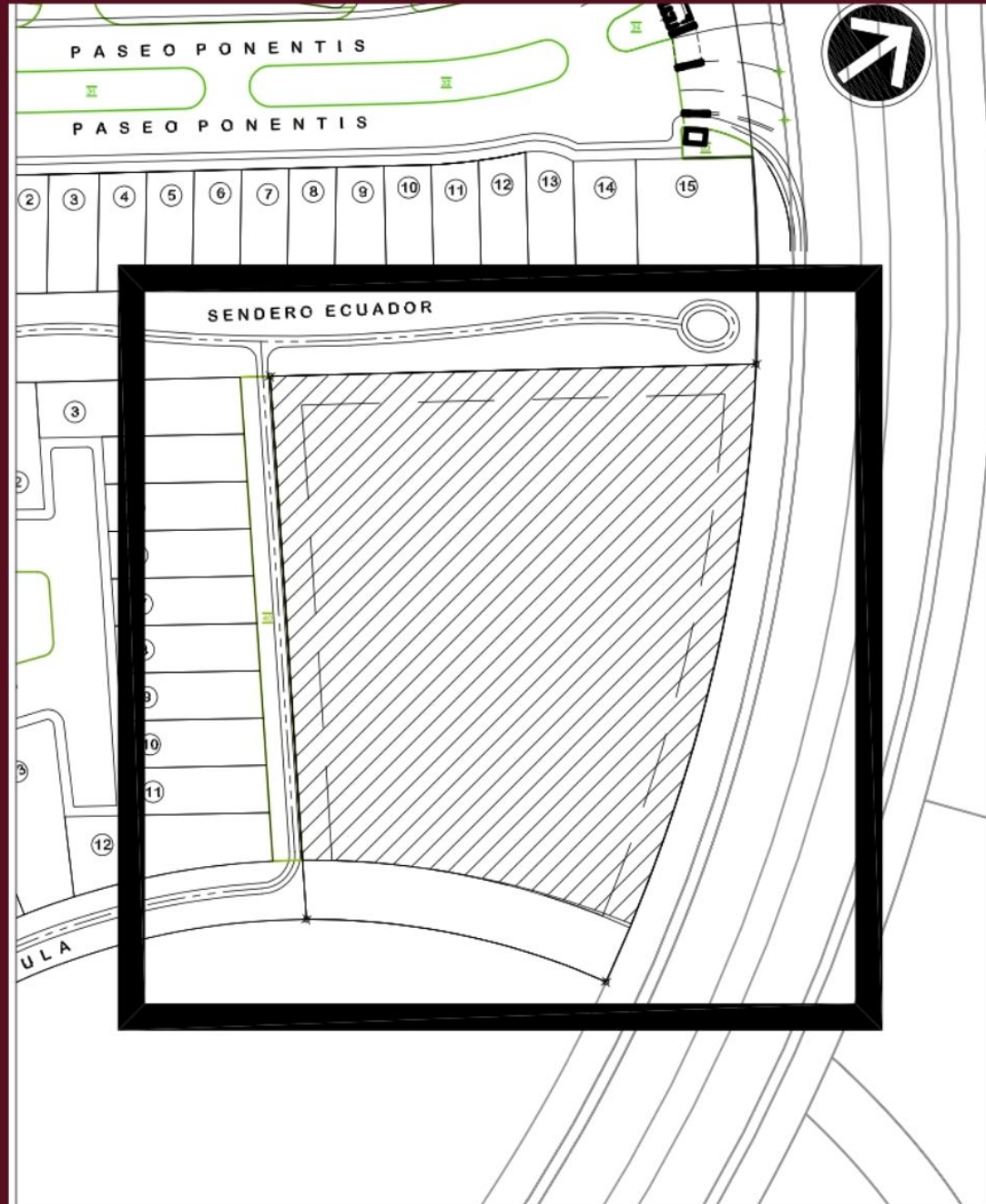
BULEVAR J. M. VILLAR MIR

CORREDOR BIOLÓGICO

LOTE 14
CD MAYAKOBA



LOCALIZACIÓN GENERAL



LOCALIZACIÓN LOTE



 SELVA & Co.
COMERCIAL

SENDEROS







SELVA & Co.
COMERCIAL



SELVA & Co.
COMERCIAL



**Centro
Downtown**

**Supermercado
Supermarket**



**Playa - Beach
"Punta
Esmeralda"**

**Playa - Beach
"Xcalacoco"**

**Playa - Beach
"Punto uno"**

Golf

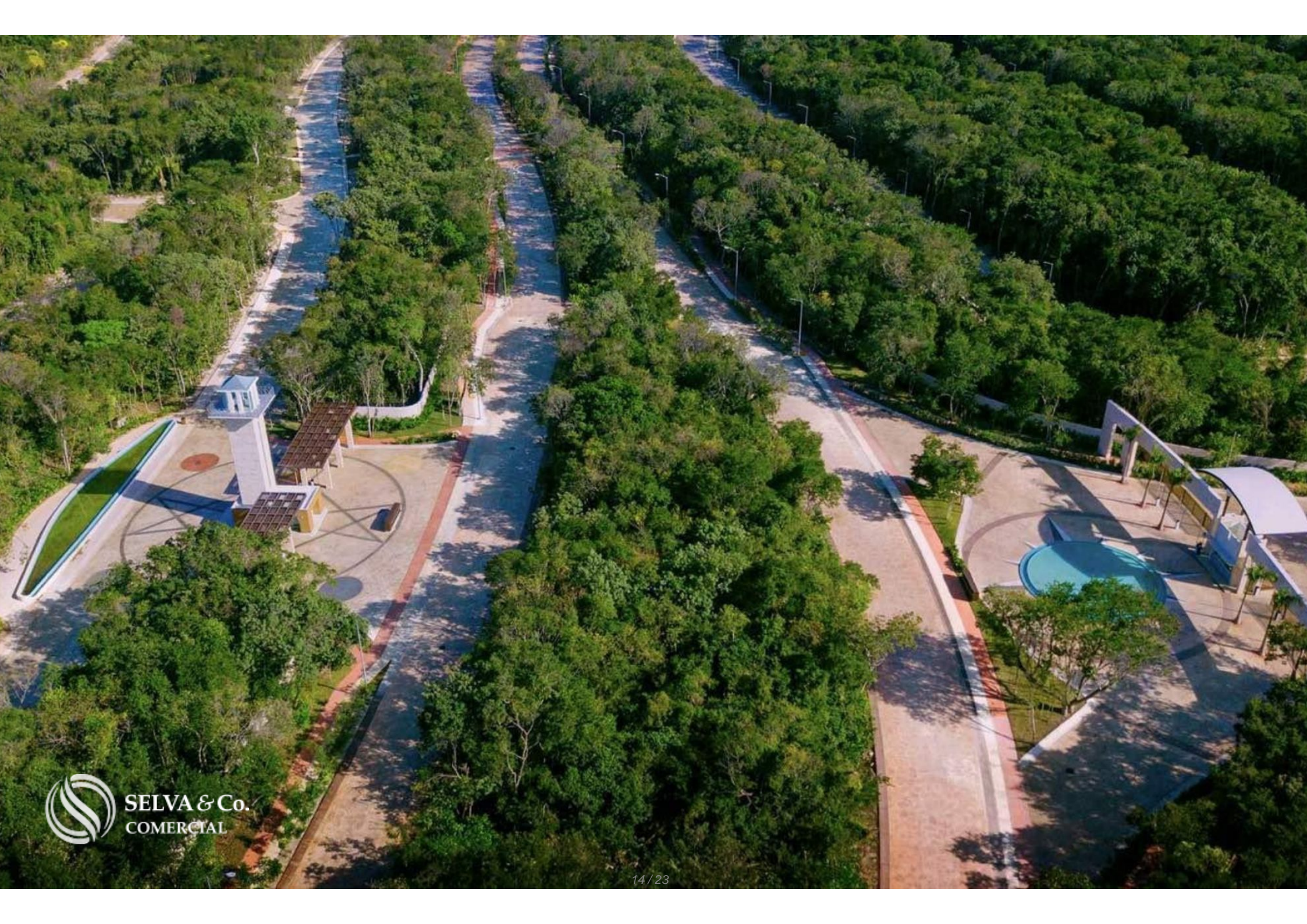
**Golf
Ciudad Mayakoba**

**TERRENO
LOT**



 SELVA & Co.
COMERCIAL

SENDEROS









Description

ALPC214-1

Multifamily Land in a Private Community for Sale, Playa del Carmen.

Multifamily land located in one of the most prestigious and ecological communities of Playa del Carmen. Ideal for developers looking to build luxury residences or high-yield rental units.

Urbanized macrolot with utilities in place ready to build.

COMMUNITY SIZE & CONSERVATION AREAS

Total Area: 409 hectares

Natural Reserve: 30% of the community

Conservation Area: 134 hectares

Urban Green Parklands: 10 hectares

Bike Paths: 24 km

Walking Trails: 27 km

Wildlife Crossings: 25 designated points

AMENITIES & INFRASTRUCTURE

24/7 Gated Security

Bike and walking trails

Biological corridors for wildlife

Large urban green spaces

Exclusive beach club access

Medical center with clinic

Commercial village

Community chapel

Sports areas and outdoor recreation

LOCATION

Multifamily land for sale in Senderos Poniente Mayakoba, Playa del Carmen, Quintana Roo, Mexico.

10 minutes from the nearest supermarket

20 minutes from Playa del Carmen's famous Fifth Avenue

10 minutes from "El Camaleón" Mayakoba Golf Course

PROPERTY STATUS

Ready to build immediately with legal title and full legal certainty.

OFFICIAL PRICE

The official price of this property is X pesos, prices in US dollars are provided as a reference. For purchase, the exchange rate of the day will be applied.

The images presented are for illustrative purposes and may differ from the final product in features and location.

Prices are subject to change without notice. Contact us to send you the price list and updated information.

Schedule your appointment to visit the area or call us to answer your questions.

Location





SELVA & Co.
COMERCIAL

MX 984 803 2058 / US 805 308 2900
www.selvacomercial.com