



SELVA & Co.
COMERCIAL

www.selvacomercial.com

Viñedos Puerta del Lobo
Puerta del Lobo Vineyards

162,000 m²



Agricultural Land Near Vineyards for Sale, Querétaro

<i>ID: ALQR200</i>	<i>Location: Queretaro</i>
<i>Zone: Zibatá</i>	<i>Type: Industrial</i>
<i>Land: 162,000 m2 / 1,743,768.00 ft</i>	<i>Land ha: 16.20 ha / 40.03 ac</i>

Viñedos Puerta del Lobo
Puerta del Lobo Vineyards

162,000 m²

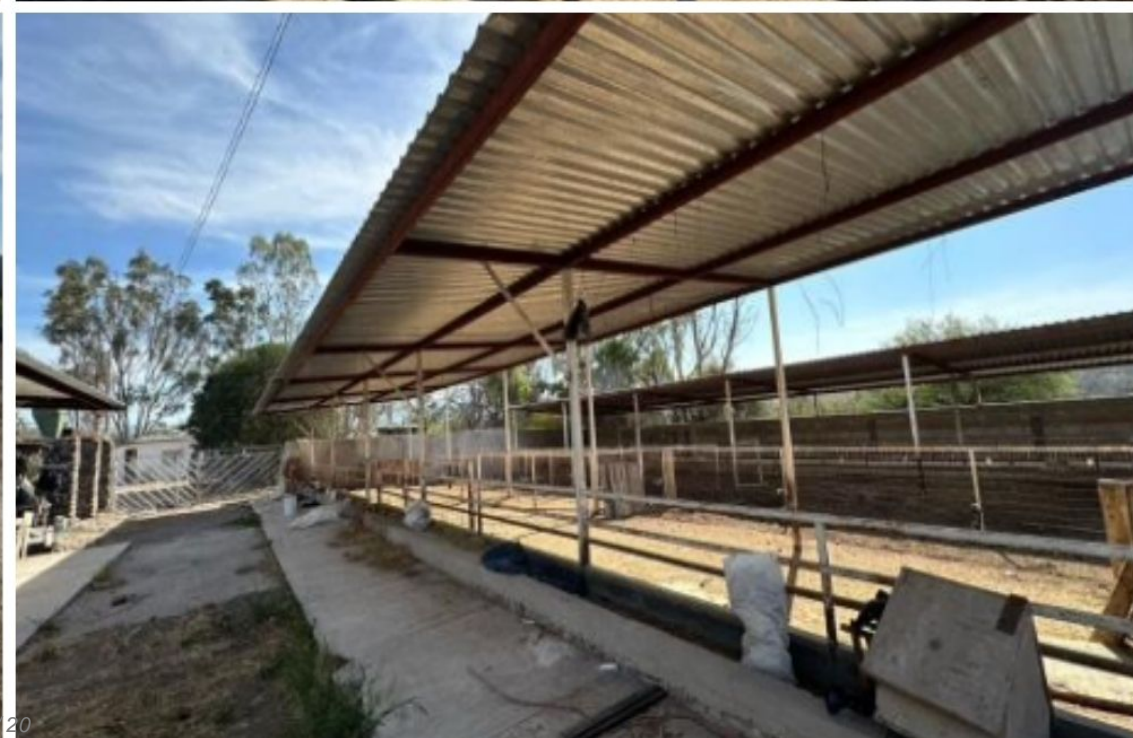


16.2 HAS

Carretera Chichimequillas - la Griega



 SELVA & Co.
COMERCIAL





Alrededores - Surroundings



Alrededores - Surroundings



Alrededores - Surroundings



Alrededores - Surroundings



Alrededores - Surroundings





Aeropuerto Internacional de Querétaro
Querétaro International Airport



Alrededores - Surroundings





 SELVA & Co.
COMERCIAL

Description

ALQR200 Juan Pablo

Agricultural Land Near Vineyards for Sale, Querétaro

Land of 162,000 m² located on the Chichimequillas - La Griega highway in Querétaro. Situated in an area surrounded by vineyards, including Puerta del Lobo Vineyard, surrounded by luxury developments and just minutes from Querétaro International Airport.

Land for sale on a high foot and vehicle traffic avenue.

FEATURES

Land Use: Agricultural

Includes a well with a permit to use 120,000 m³ of water annually.

Equipped with a power supply contract.

Includes a 152 m² house.

Includes a 138 m² warehouse.

Drip irrigation infrastructure.

LOCATION

Land for sale on the Chichimequillas - La Griega highway in Querétaro, Mexico.

Adjacent to Puerta del Lobo Vineyards.

25 minutes from Querétaro International Airport.

PROPERTY STATUS

Title Deed and legal certainty.

OFFICIAL PRICE

The official price of this property is \$60,000,000 pesos, prices in US dollars are provided as a reference. For purchase, the exchange rate of the day will be

applied.

The images presented of the lot are for illustrative purposes and may differ from the final product in features and location.

Prices are subject to change without notice. Contact us to send you the price list and updated information.

Schedule your appointment to visit the area or call us to answer your questions.

#Querétaroproperties #Querétaro #Querétarolistings
#selvacorealty #QuerétaroRealEstate #selvacomercial
#commercialrealestateQuerétaro
#commercialpremisesforsaleQuerétaro
#commercialrealestaterealestateQuerétaro #commercialrealestate
#Querétarocommercialrealestate

#Querétarocommerciallistings #landbankingQuerétaro
#landbankingQuerétaro #commerciallandQuerétaro
#lotsandlandQuerétaro #lotsforsaleQuerétaro #landforsale
#lotsforsaleQuerétaro #macrolotsQuerétarO

Location





SELVA & Co.
COMERCIAL

MX 984 803 2058 / US 805 308 2900
www.selvacomercial.com