



**SELVA & Co.**  
COMERCIAL

[www.selvacomercial.com](http://www.selvacomercial.com)



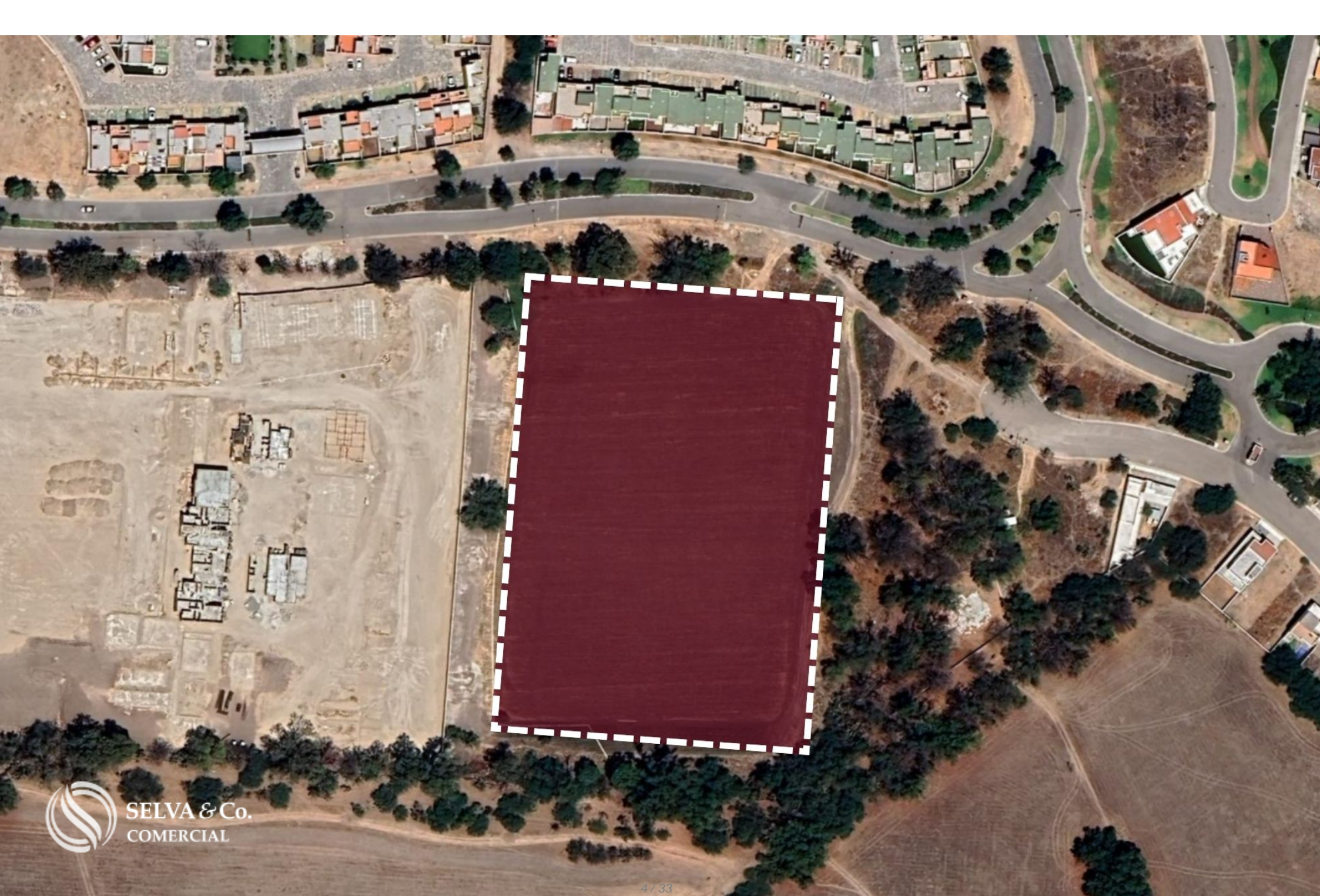
**12,341.5540 m<sup>2</sup>**

# Lot for 67 homes in a gated community with a golf course, for sale, San Miguel de Allende.

<i>ID: DLASM205-1</i>	<i>Location: San Miguel de Allende</i>
<i>Zone: Zirándaro</i>	<i>Type: Land</i>
<i>Land: 12,342 m2 / 132,849.29 ft</i>	<i>Land ha: 1.23 ha / 3.05 ac</i>



12,341.5540 m2







ELVA & Co.  
COMERCIAL





**Área natural protegida - Protected natural area**



## Plaza comercial “Luciernaga” - Shoppingmall



**San Miguel de Allente**  
*Downtown*

**Golf**

**Área Natural Protegida**  
*Protected Natural Area*

**Golf**

**Liverpool**

**Escuelas cerca del Lote**  
*Schools near the Lot*



**Plaza Comercial**  
**Shoppingmall**

**TERRENO - LOT**

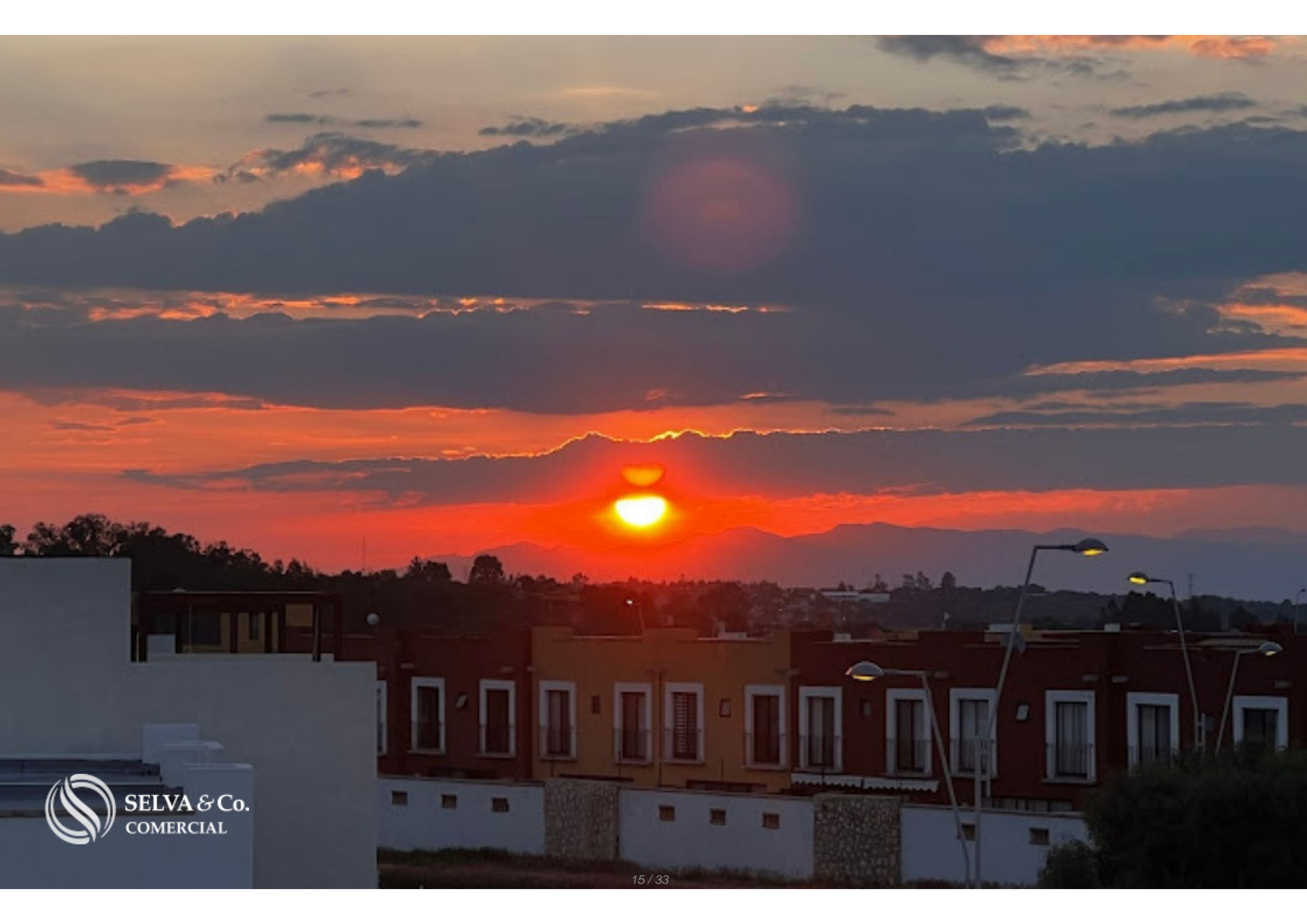
**Área natural protegida - Protected natural area**

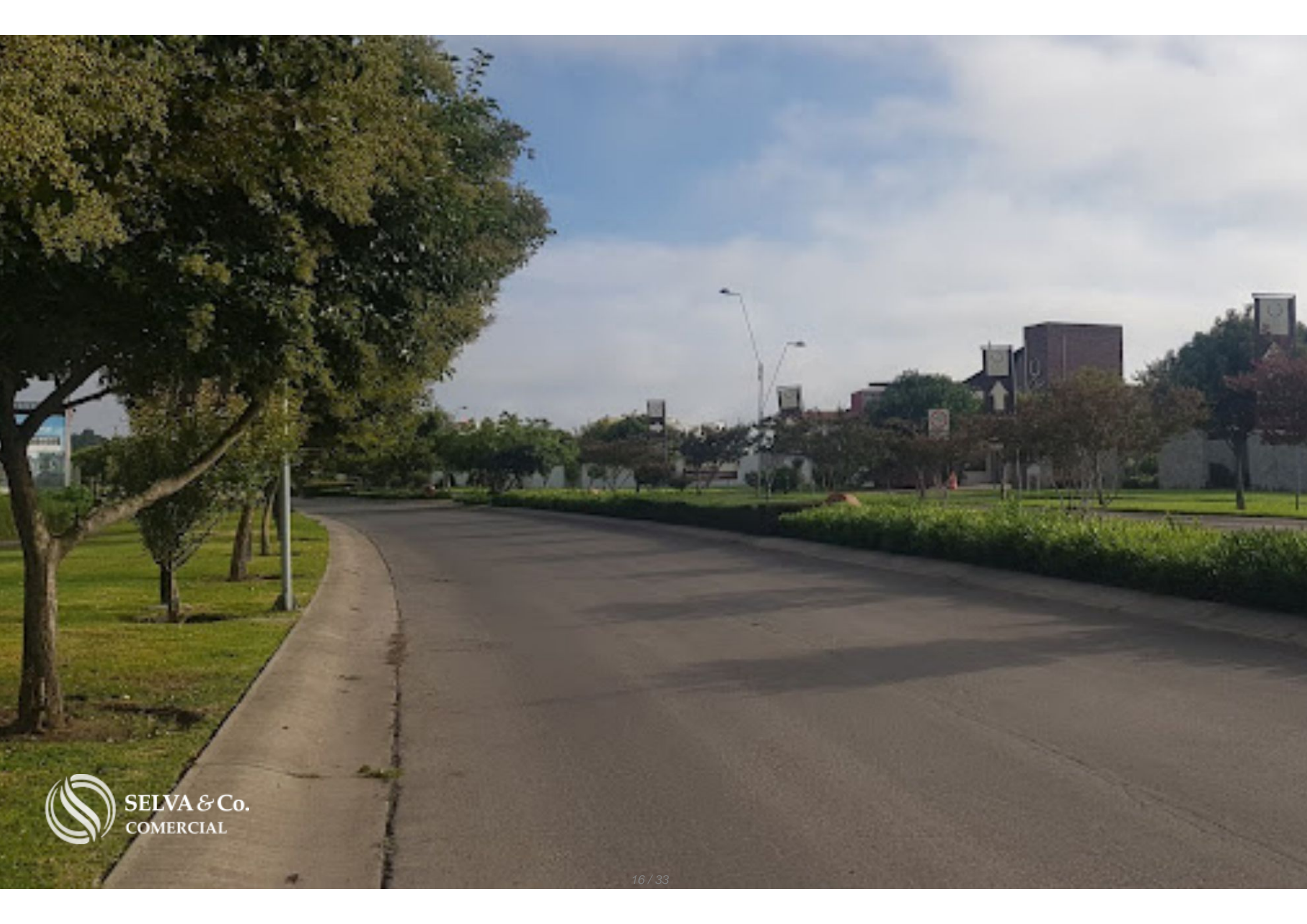


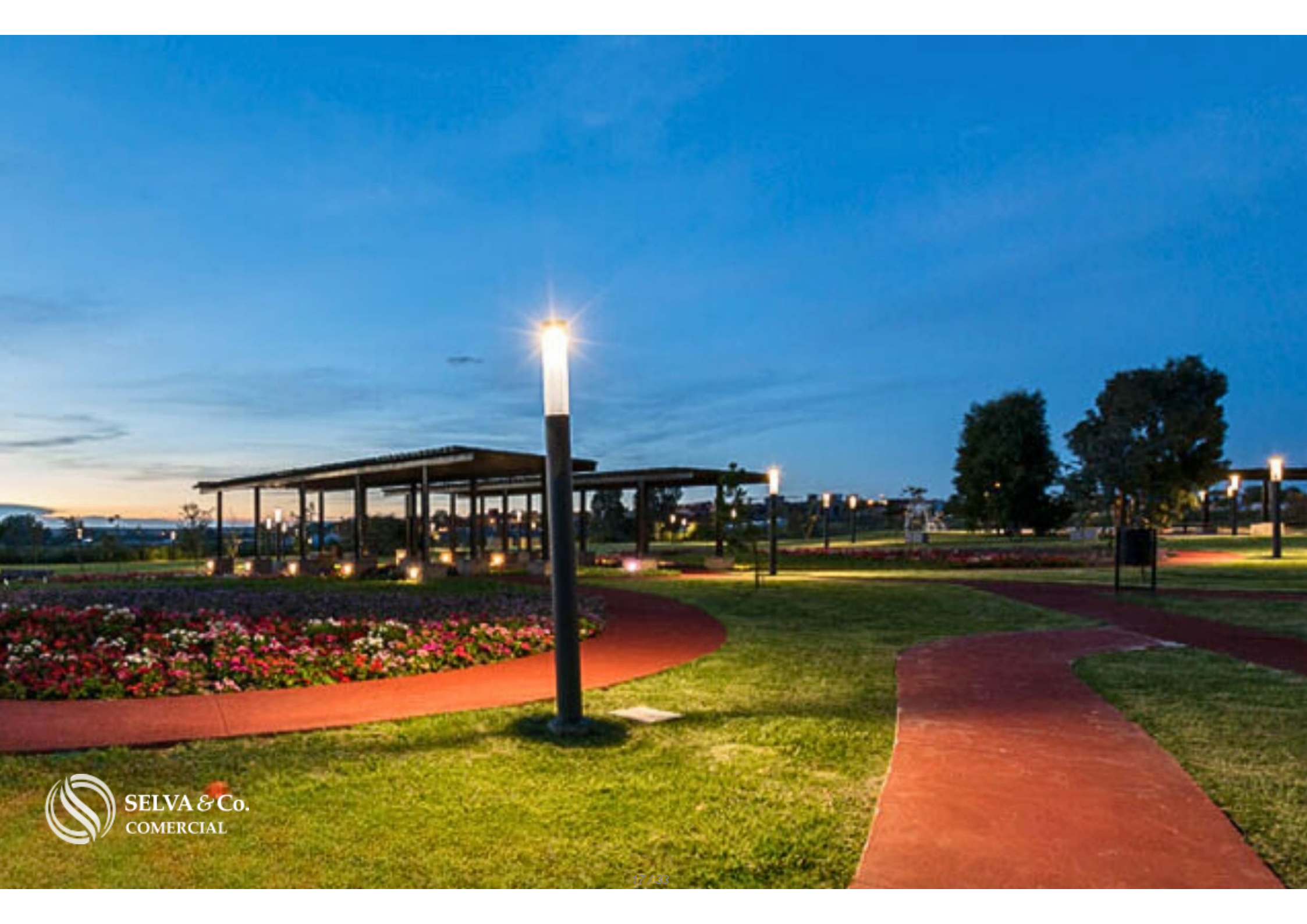


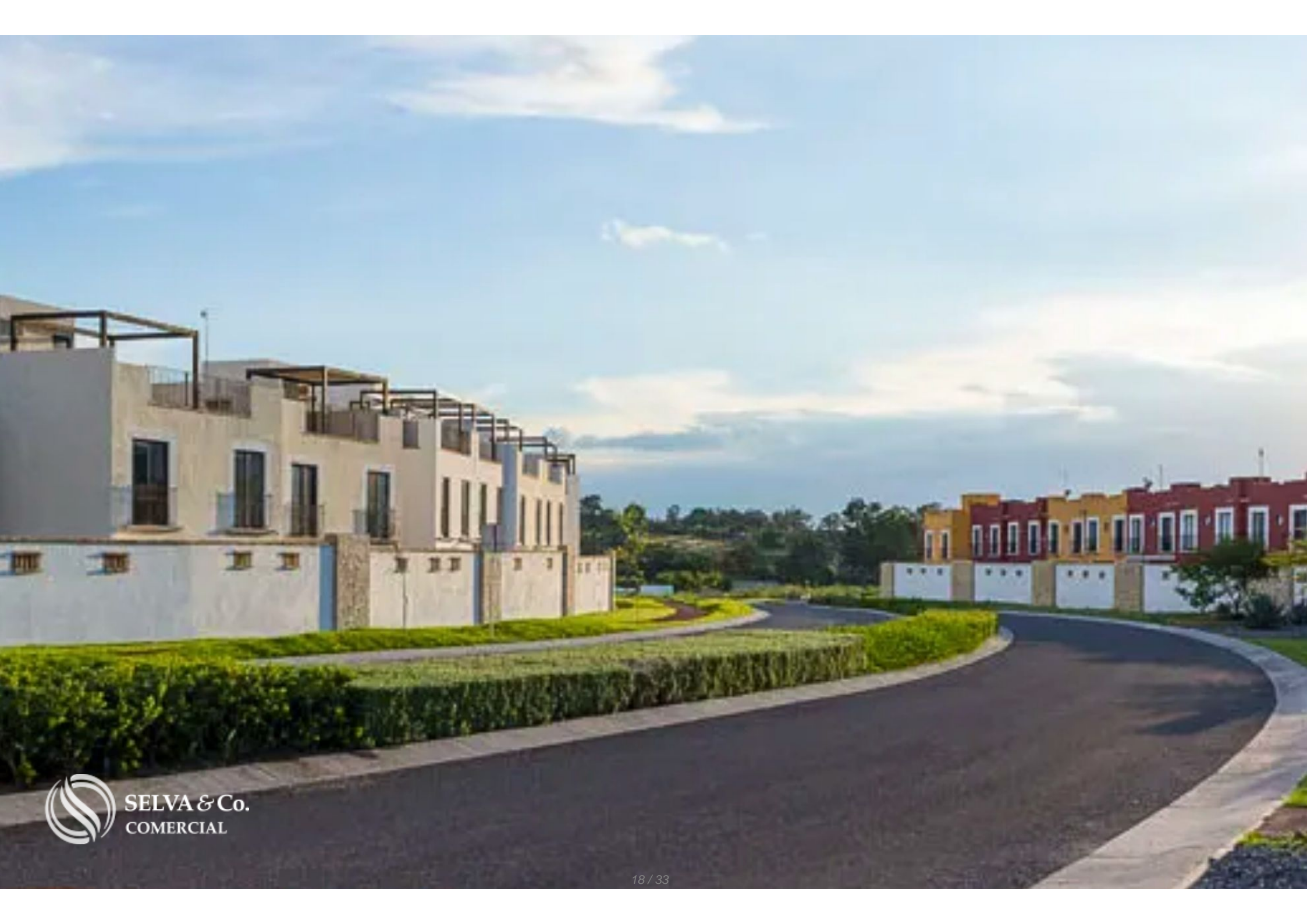
San Miguel de Allende - Downtown











San Miguel de Allende - Downtown



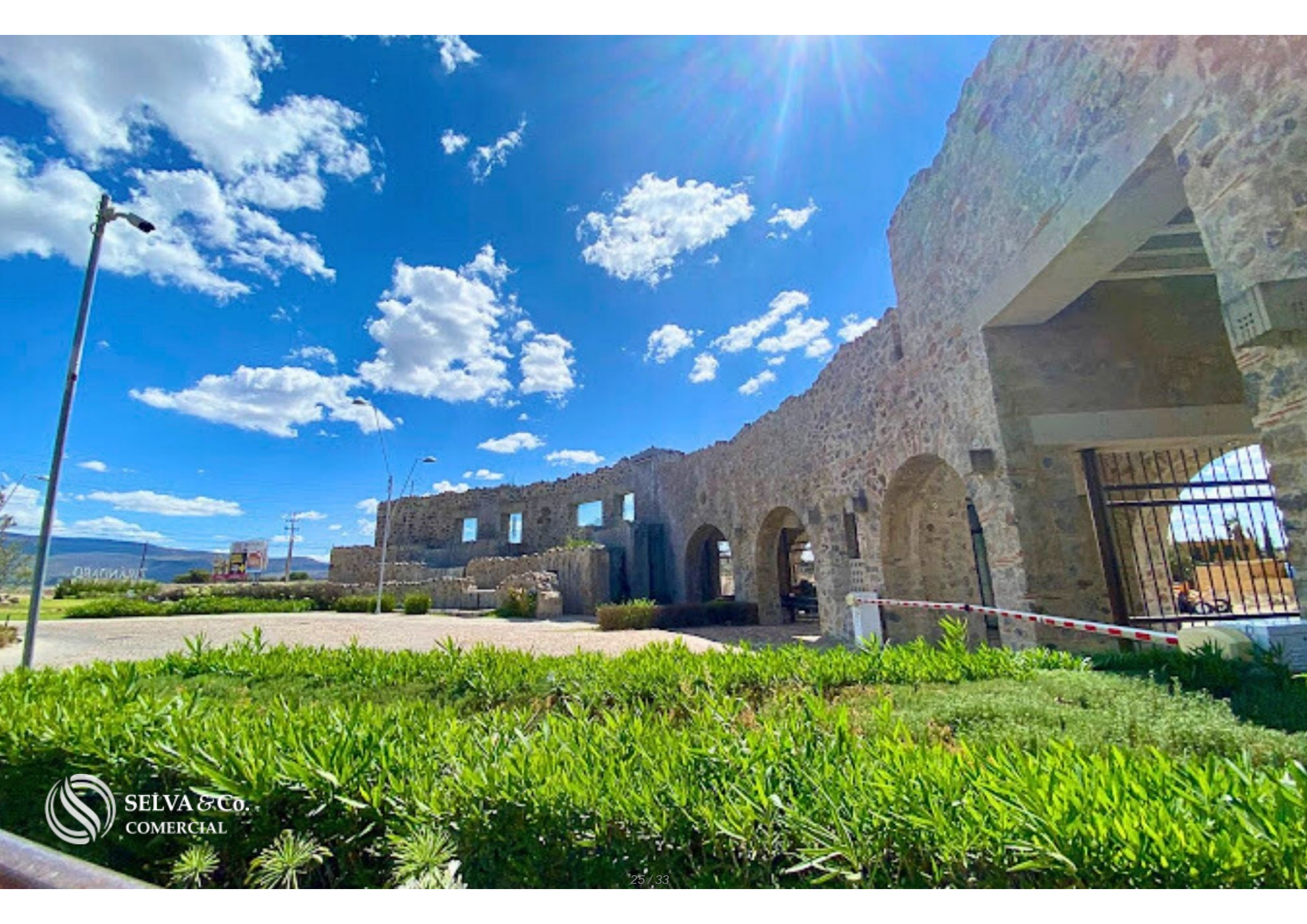
















## Description

DLSM205-1

Lot for 67 homes in a gated community with a golf course, for sale, San Miguel de Allende.

Land within a gated community with 20 hectares of green areas, a golf course, vineyards, gardens, a gated entrance, roadways, and a commercial area.

This gated community is located in San Miguel de Allende, near prestigious shopping areas and connected to Mexico's international airports in Querétaro and Bajío.

## AMENITIES

20 hectares of green areas

Golf course

Vineyards

Commercial area

Roads

Landscaped medians

## SERVICES

Paved streets

Water service

Electricity

Drainage

## LOCATION

Land for sale in San Miguel de Allende, Querétaro, Mexico.

18 minutes from downtown San Miguel de Allende.

54 minutes from Querétaro.

## PROPERTY STATUS

Property title, legal certainty.

## OFFICIAL PRICE

The official price of this property is 28,262,158 Pesos price in US dollars is provided as a reference. For purchase, the exchange rate of the day will be applied.

The image of the lot is for illustrative purposes only; the actual land may vary in characteristics and exact location.

Prices are subject to change without notice. Contact us to send you the price list and updated information.

Schedule your appointment to visit the area or call us to answer your questions.

#SanMigueldeAllende #SanMigueldeAllendeproperties  
#SanMigueldeAllendelistings #selvacorealty #GolfCourseRealEstate  
#SanMigueldeAllenderealestate #realestateSanMigueldeAllende #selvacomercial  
#commercialrealestatemexico  
#landbankingSanMigueldeAllende #landbankingmexico  
#commerciallandSanMigueldeAllende #lotsandlandSanMigueldeAllende  
#lotsforsaleSanMigueldeAllende #landforsale #lotsforsaleSanMigueldeAllende  
#macrolotsSanMigueldeAllende

# Location





**SELVA & Co.**  
**COMERCIAL**

MX 984 803 2058 / US 805 308 2900  
[www.selvacomercial.com](http://www.selvacomercial.com)