

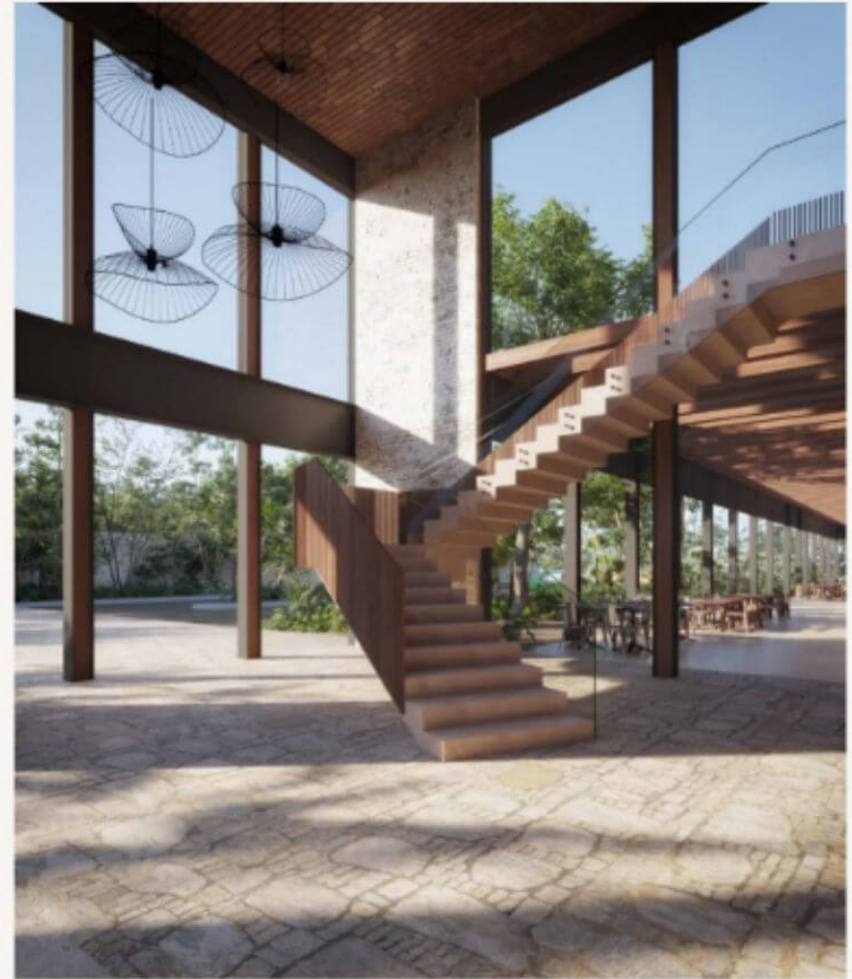


# Commercial space in residential development for sale, Region 11, Tulum.

<i>ID: DTU334-2</i>	<i>Location: Tulum</i>
<i>Zone: Region 11</i>	<i>Type: Local</i>
<i>Construction: 1,285 m2 / 13,831.74 ft</i>	









SELVA & Co.  
COMERCIAL



**Playa Paraíso**

**Playa Santa Fe**

**Playa las Palmas**

**Local Comercial**



 **SELVA & Co.**  
COMERCIAL



 SELVA & Co.  
COMERCIAL

**Playa Paraíso**

# Playa Santa Fe

# Playa las Palmas

## Description

DTU334-2

Commercial space in residential development for sale, Region 11, Tulum.

Located within an exclusive residential and tourist development in Tulum, these commercial spaces offer the perfect opportunity to invest in a highly strategic area. With a constant flow of residents and tourists, these spaces are designed to attract businesses looking for a dynamic and high-profile environment.

These commercial spaces are designed to offer a complete experience in a vibrant and luxurious setting.

- CONSTANT CUSTOMER FLOW
- Proximity to tourist attractions and residential areas ensures a varied and growing customer base.

-

- MODERN AND FUNCTIONAL DESIGN

- Commercial spaces that adapt to different types of businesses, from boutiques to restaurants and specialized services.

-

- HIGH-QUALITY INFRASTRUCTURE

- Top-tier facilities with luxury finishes and cutting-edge technology to ensure comfort and efficiency in every space.

-

## LOCATION

Commercial space for sale in Region 11, Tulum, Quintana Roo, Mexico.

- 2 minutes from Las Palmas Beach

- 12 minutes from Playa Paraíso

- 13 minutes from Santa Fe Beach

- 51 minutes from Tulum International Airport

The images used for this advertisement are from the general project and do not correspond to any particular residence.

Schedule your appointment to visit the area or call us to answer your questions.

#Tulum #Tulumproperties #Tulumlistings #selvacorealty #Tulumrealestate  
#realestatetulum #commercialrealestatemexico  
#commercialpremisesforsaletulum #commercialrealestate  
#tulumcommercialrealestate

# Location





**SELVA & Co.**  
**COMERCIAL**

MX 984 803 2058 / US 805 308 2900  
[www.selvacomercial.com](http://www.selvacomercial.com)