



**SELVA & Co.**  
**COMERCIAL**

[www.selvacomercial.com](http://www.selvacomercial.com)



**Plaza las Ámericas  
Shoppingmall**

**CENTRO  
Downtown**

**Los Olivos**

**Selvanova**

**Escuela  
School**

**Misión de  
las flores**



**TERRENO - LOT**

# Mixed-use land, for sale Paseo del Sisal, Playa del Carmen.

<i>ID: ALPC212</i>	<i>Location: Playa del Carmen</i>
<i>Zone: Paseo del Sisal</i>	<i>Type: Land</i>
<i>Land: 1,681 m2 / 18,094.28 ft</i>	<i>Land ha: 0.17 ha / 0.42 ac</i>

**Plaza las Ámericas  
Shoppingmall**

**CENTRO  
Downtown**

**Los Olivos**

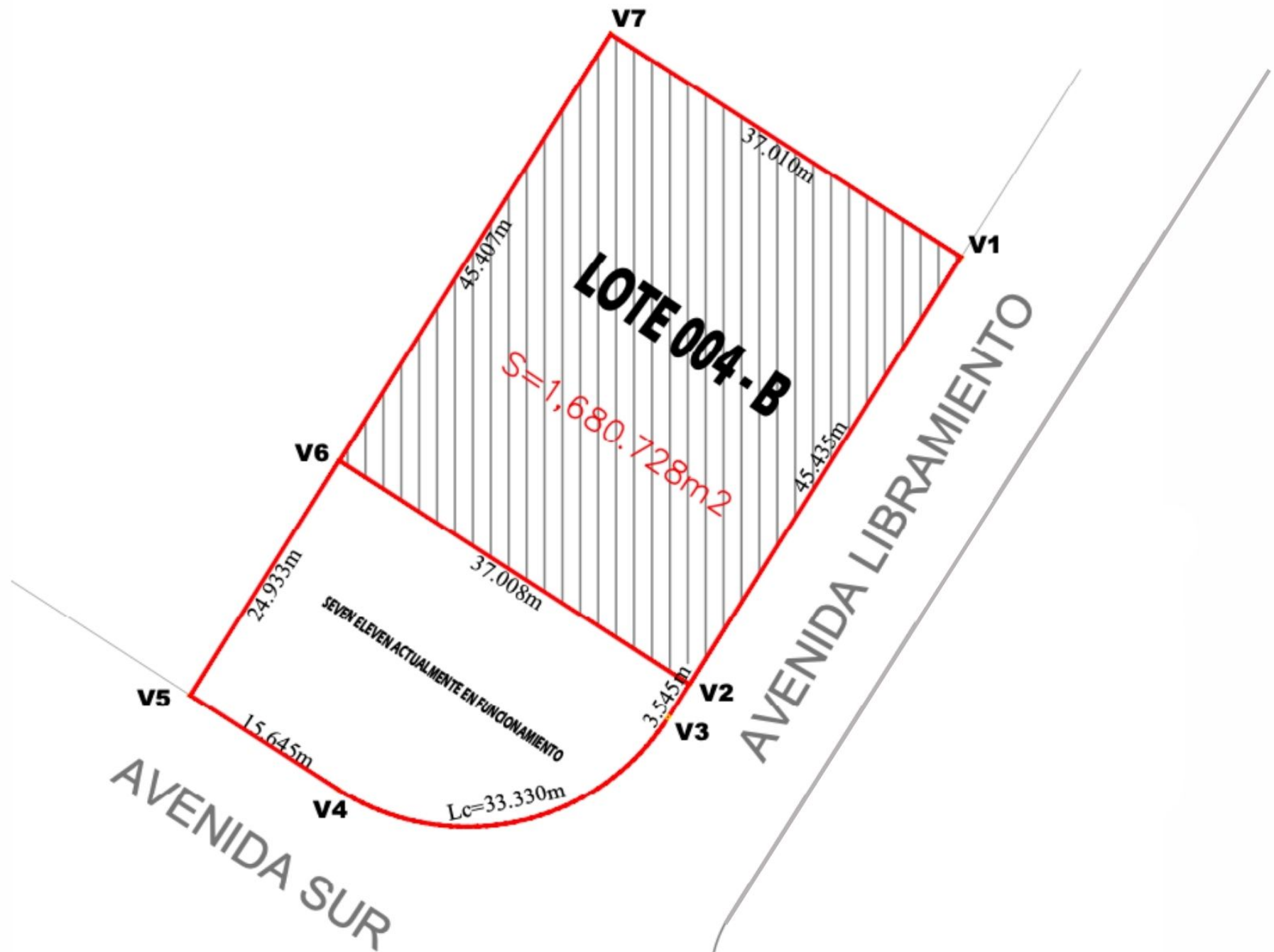
**Selvanova**

**Escuela  
School**

**Misión de  
las flores**

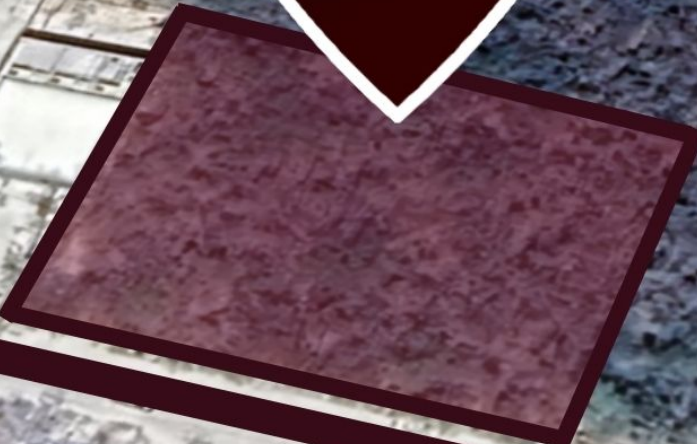


**TERRENO <sup>SA</sup> LOT**  
COMERCIAL





**Avenida Sur**



**Avenida Libramiento**

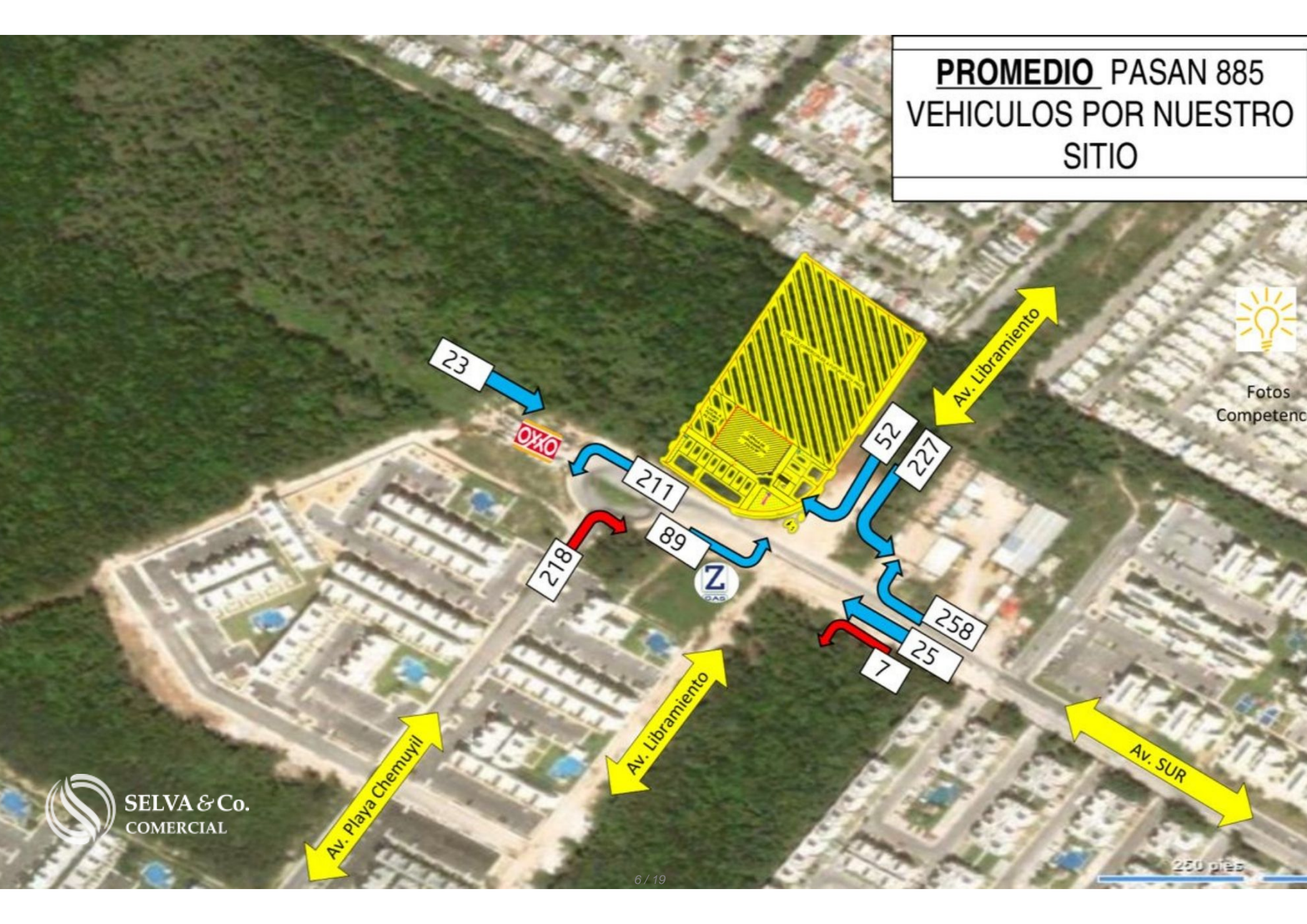


**SELVA & Cía.  
COMERCIAL**

**PROMEDIO PASAN 885  
VEHICULOS POR NUESTRO  
SITIO**



Fotos  
Competencia



 **SELVA & Co.**  
COMERCIAL

**Estación del Tren Maya**  
Mayan Train station

**Supermercado**  
Supermarket

**Parque acuático**  
Water park

**Supermercado**  
Supermarket

**Paseo del Sisal**



**TERRENO - LOT**



**45.407 m2**

**37.008 m2**

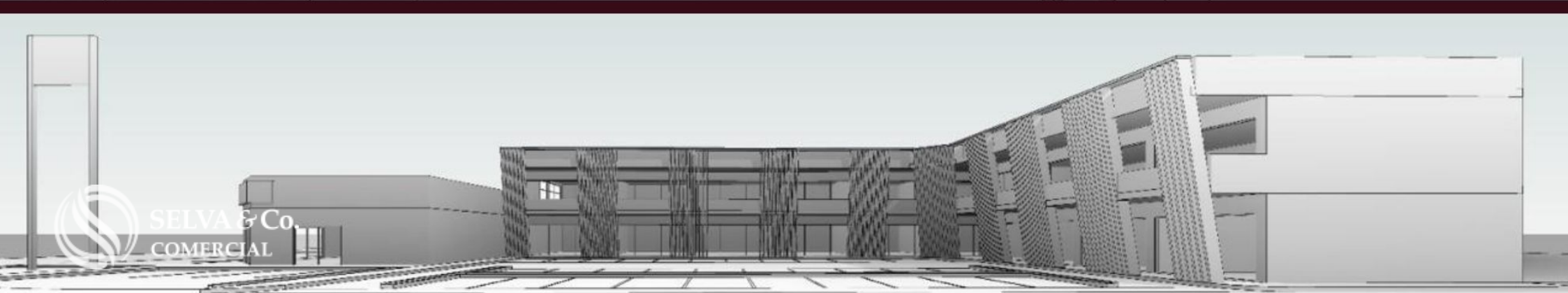
**TOTAL: 1,680.728 m2**

**37.010 m2**

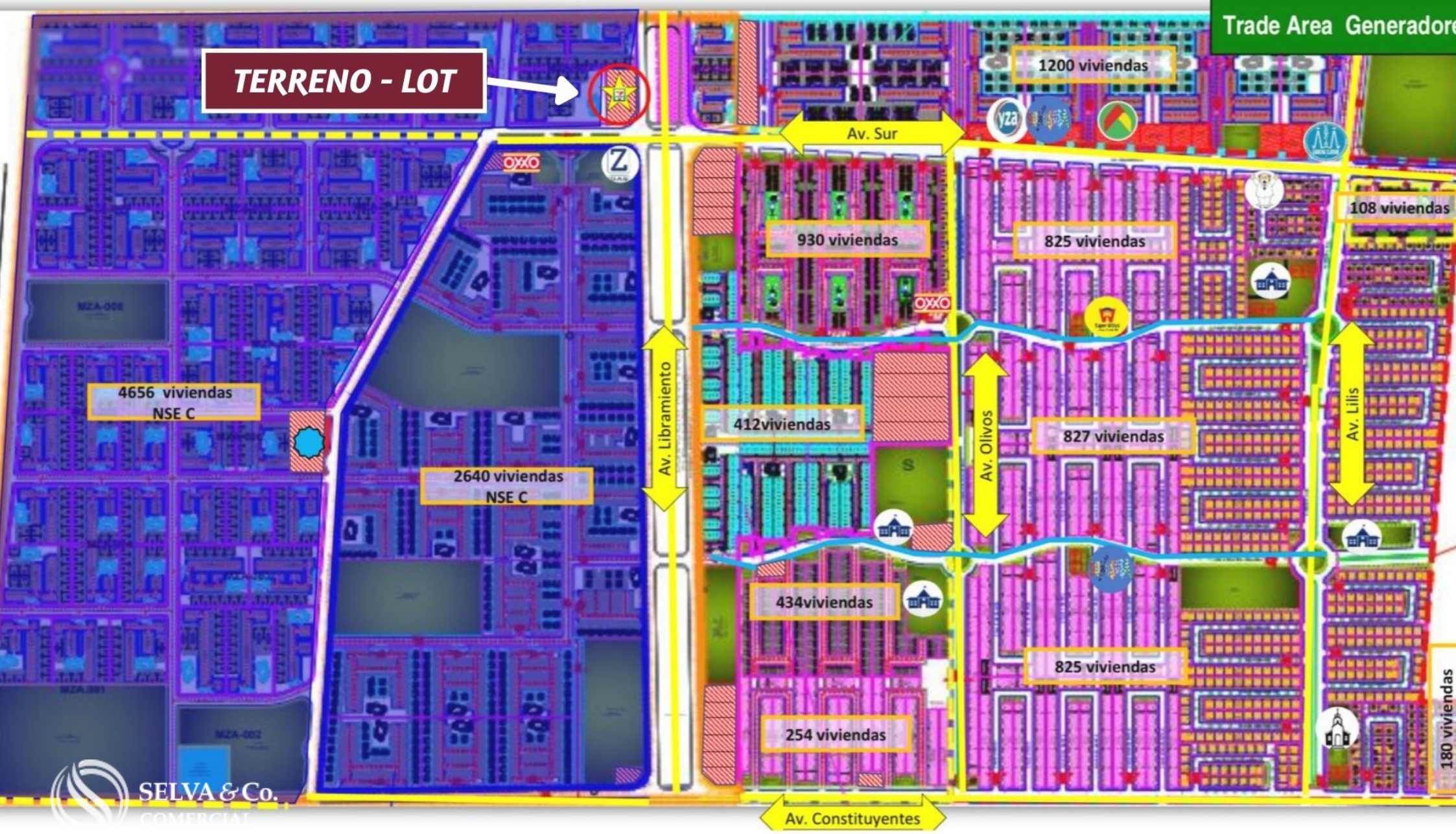
**45.435 m2**



**SELVA & Co.**  
COMERCIAL



**TERRENO - LOT**



# Playa del Carmen





 SELVA & Co.  
COMERCIAL



**“Portal Maya”**  
SELVA & Co.  
**Estátua RCI Statue**

## Description

ALPC212 Alejandra Arias

Mixed-use land, for sale Paseo del Sisal, Playa del Carmen.

Land for sale on an avenue with high pedestrian and vehicular flow.

Located in a growth area, near Residential Developments. Next to a convenience store, which guarantees the flow of people through the area.

### CHARACTERISTICS OF THE LA D

On-site services

Land use: mixed commercial and residential

Cos: 0.45

Cus: 1.20

Height 12 meters / 3 levels.

## MEASURES

37 meters x 45.4 meters

Total: 1,680 m<sup>2</sup>

## SERVICES

Paved roads

Water service

Light

Sewer system.

## PROPERTY STATUS

Property title, legal certainty.

## LOCATION

Lot for sale in Paseo Sisal, Playa del Carmen, new, growing residential

area.

8 minutes walk from the nearest supermarket (550 meters).

10 minutes from Plaza las Americas.

16 minutes from Playa del Carmen downtown.

If you want more information about the lot or learn more about the real estate market in the area, contact us.

The official price of this property is in pesos, the price in dollars is a reference. The exchange rate of the day will be used for the purchase.

Schedule your appointment to visit the area or call us to answer your questions.

#PlayadelCarmen

#PlayadelCarmenproperties

#PaseldelSisal

#PlayadelCarmenlistings #selvacorealty #PlayadelCarmenrealestate

#selvacomercial #landbankingPlayaDelCarmen #landbankingmexico  
#commerciallandPlayadelCarmen #lotsandlandPlayadelCarmen  
#lotsforsalePlayadelCarmen #landforsale #lotsforsalePlayadelCarmen

## Location





**SELVA & Co.**  
**COMERCIAL**

MX 984 803 2058 / US 805 308 2900  
[www.selvacomercial.com](http://www.selvacomercial.com)