



SELVA & Co.
COMERCIAL

www.selvacomercial.com



Ocean view commercial premises for Rent in front of the sea boardwalk, Downtown, Cozumel

<i>ID: ERCO215</i>	<i>Location: Cozumel</i>
<i>Zone: Down Town</i>	<i>Type: Local</i>
<i>Construction: 220 m2 / 2,368.08 ft</i>	





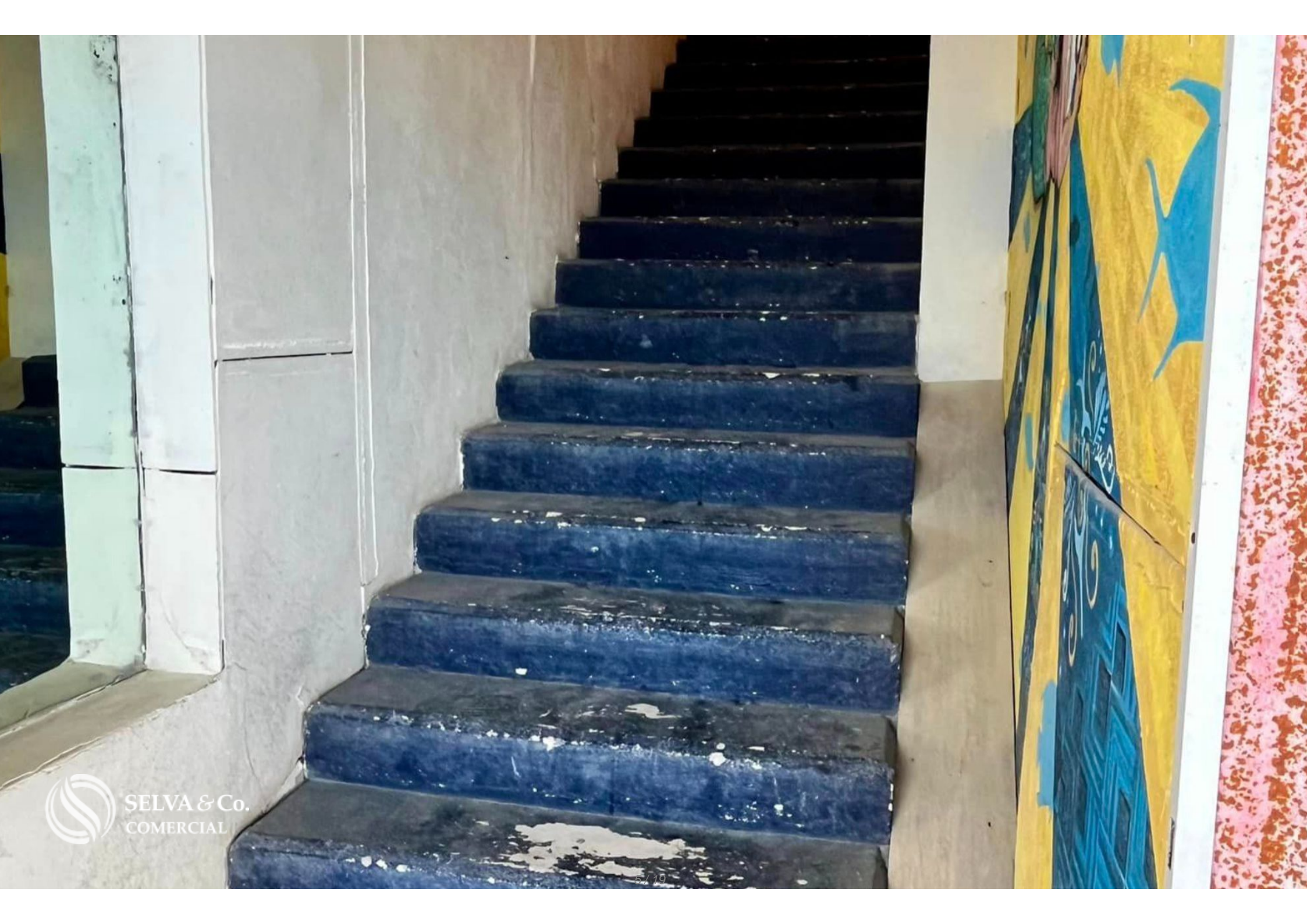
987 873 8860
984 803 2058
FOR RENT

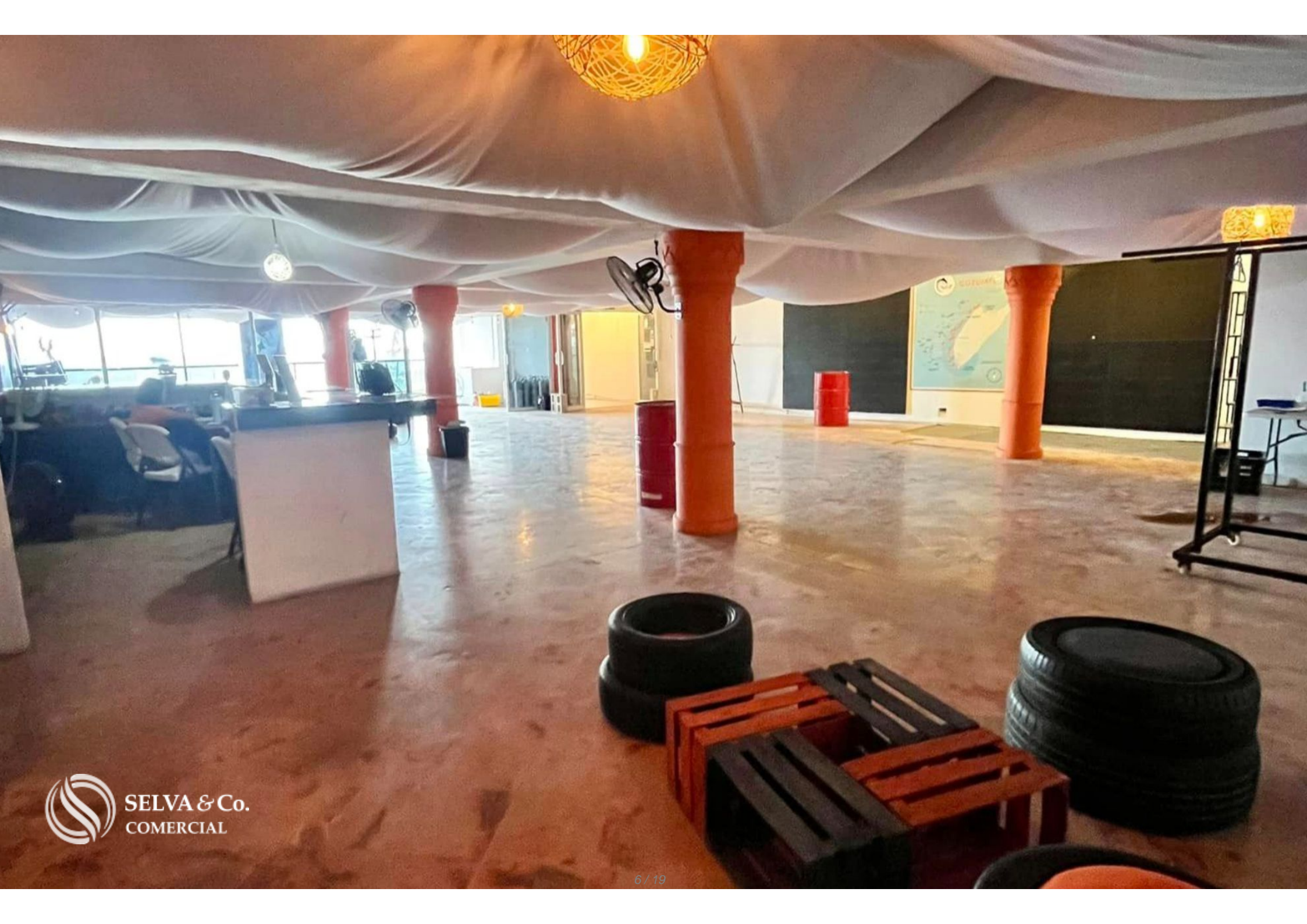
S★T★A★R★S
COZUMEL CITY

Dive Center | Snorkeling
Open Everyday
+52 987 141 0722



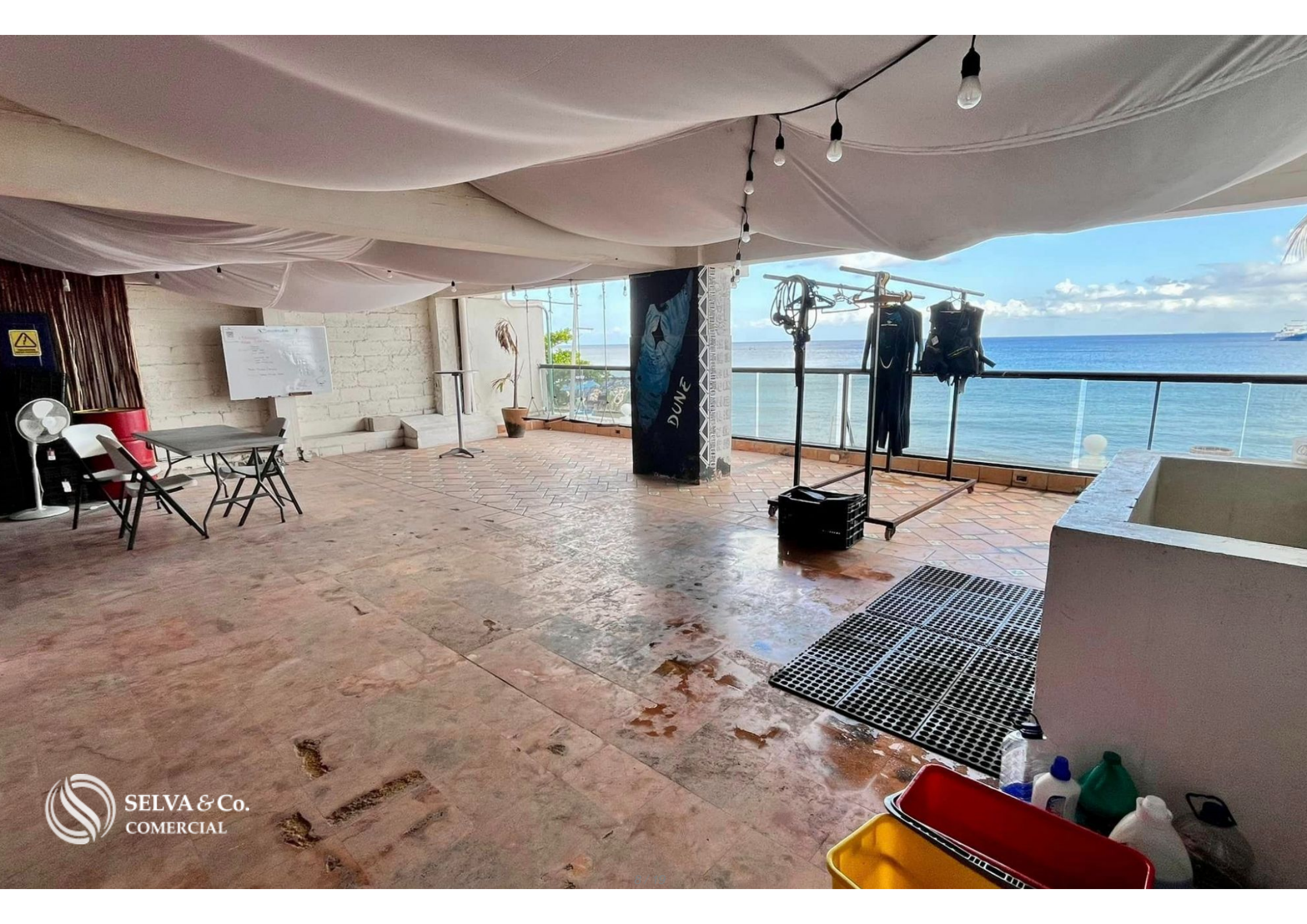
SELVA & Co.
COMERCIAL







 SELVA & Co.
COMERCIAL











Local Comercial
Commercial Premises

Aeropuerto Internacional de Cozumel
Cozumel International Airport

Cozumel Centro
Downtown



Malecón de Cozumel Cozumel Sea Boardwalk





Cozumel Centro
Downtown Cozumel
COMERCIAL

Description

ERCO215 Vanessa Gurza

Ocean view commercial premises for Rent in front of the sea boardwalk, Downtown, Cozumel

Commercial premises for rent in Cozumel Island, located on the sea boardwalk with stunning ocean views.

Located on the second floor, this space is perfect for a restaurant or bar, providing an excellent opportunity to establish your business in a highly trafficked and attractive tourist area.

LOCATION

Commercial space for rent facing the sea on the boardwalk of Cozumel, Quintana Roo.

5 minutes walking from downtown Cozumel.

5 minutes walking from the Cozumel ferry terminal.

5 minutes from Cozumel International Airport.

AVAILABLE FOR RENT NOW

Schedule your appointment to visit the area or call us to answer your questions.

#Cozumel #selvacorealty #commercialpremisesforrentCozumel

Location





SELVA & Co.
COMERCIAL

MX 984 803 2058 / US 805 308 2900
www.selvacomercial.com