



SELVA & Co.
COMERCIAL

www.selvacomercial.com



Multifamily lot of 10,059 m2 ingated community with amenities, for sale, San Miguel de Allende.

<i>ID: DLASM204-7</i>	<i>Location: San Miguel de Allende</i>
<i>Zone: San Miguel</i>	<i>Type: Land</i>
<i>Land: 10,059 m2 / 108,275.08 ft</i>	<i>Land ha: 1.01 ha / 2.49 ac</i>



SELVA & Co.
COMERCIAL



EXIT TO QUERETARO
7 MINUTES (1.8 Mi)
ROAD TO PICACHOS



LA LUCIERNAGA MALL
LIVERPOOL
5 MINUTES (2.4 Mi)
ROAD TO ALCOGER





SELVA & Co.
COMERCIAL



SELVA & Co.
COMERCIAL



EXIT TO QUERETARO
7 MINUTES (1.8 Mi)



LA LUCIERNAGA MALL
LIVERPOOL
5 MINUTES (2.4 Mi)



SELVA & Co.
COMERCIAL



LOS PICACHOS

ROAD TO ALCOCER

CAMINO A PICACHOS



FRANQUICIAS
FRANCHISES

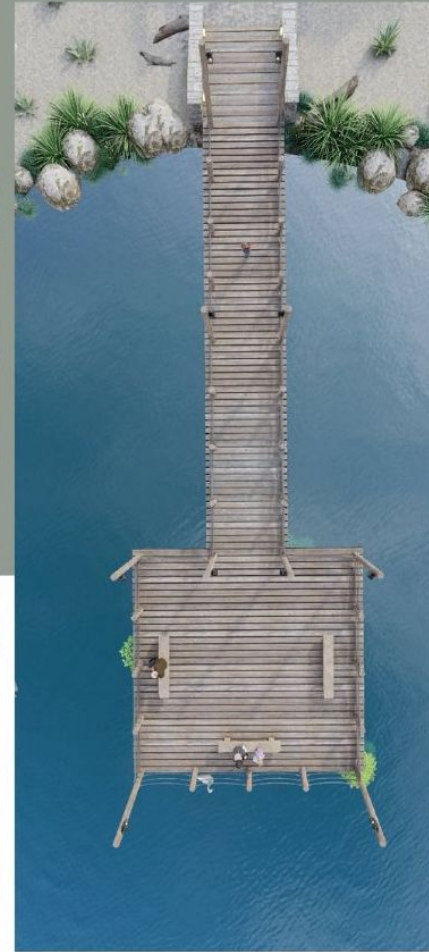


 SELVA & Co.
COMERCIAL



CAPILLA
Chapel

SENDEROS
Walking Trails



LAGO
Lake

PARQUE CANINO
Dog park





SALÓN DE EVENTOS
Event Hall

HOTEL



HUERTO
Orchard

GLAMPING



CASA DE DESCANSO
Rest house for the elderly

**Golf Malaquín
Golf Club**



**Centro
Downtown**



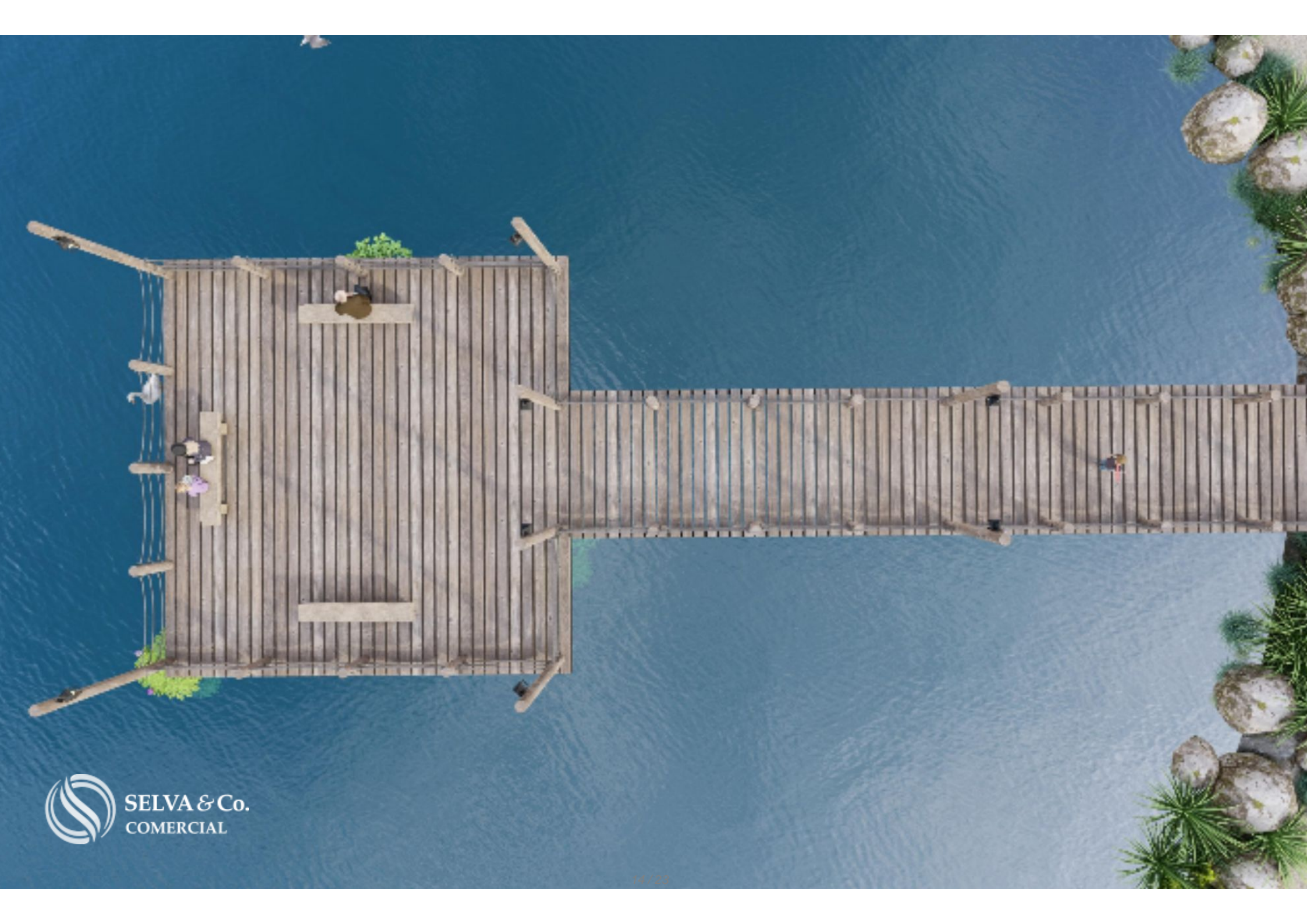
**Centro Comercial
"Luciernaga"
Shoppingmall**

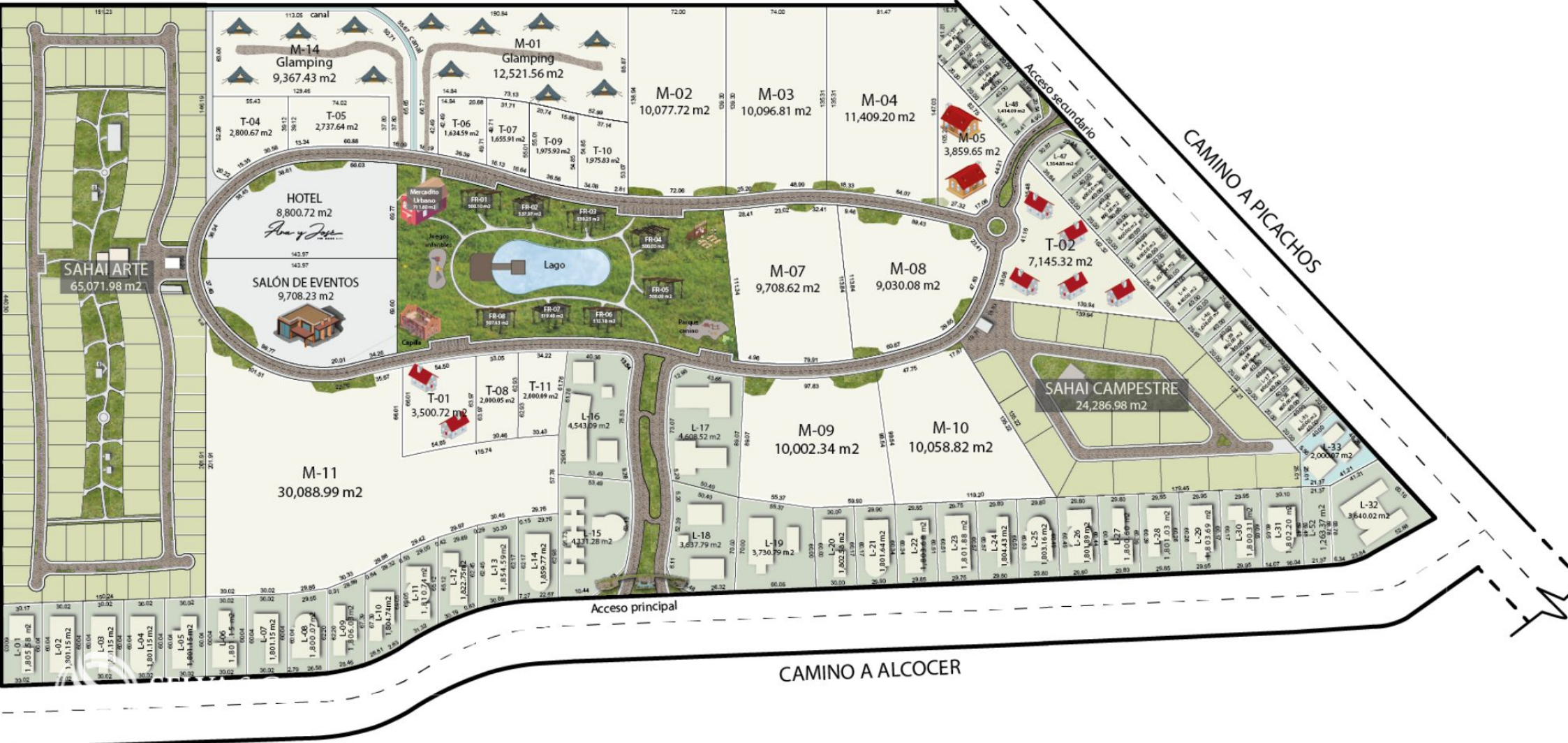


SELVA & Co.
COMERCIAL

**TERRENO
LOT**







Plaza central



**Centro - Downtown
San Miguel de Allende**



Description

DLSM204-7

Multifamily lot of 10,059 m2 ingated community with amenities, for sale, San Miguel de Allende.

Multifamily macrolot located in San Miguel de Allende, just 10 minutes from downtown and 5 minutes from the Querétaro exit.

Located within an artistic, cultural, social, and ecological residential complex. Composed of lots and investment macrolots, designed as a project where various uses interact: residential, commercial, and services.

The development includes commercial plans.

AMENITIES

Clubhouse

Chapel

Trails

Lake

Dog park

Event hall

Hotel

School

Orchard

Glamping

Rest home

Controlled access

SERVICES

Paved streets

Water service

Electricity

Drainage

LAND CHARACTERISTICS

Services at the lot line

Land use: Medium-density residential

PROPERTY STATUS

Property title, legal certainty.

LOCATION

Lot for sale in San Miguel de Allende, a growing area near new developments, shopping plazas, schools, and more.

5 minutes from Liverpool, Soriana, and Cinopolis (Plaza Luciernaga).

10 minutes from San Miguel de Allende downtown.

If you want more information about the land or learn more about the real estate market in San Miguel de Allende, contact us. We will be happy to assist you in your new investment.

The official price of this property is in pesos; the price in dollars is a reference. For the purchase, the exchange rate of the day will be used.

Schedule your appointment to visit the area or call us to resolve your doubts.

#SanMigueldeAllende

#SanMigueldeAllendeproperties

#SanMigueldeAllendelistings

#selvacorealty

#tSanMigueldeAllenderealestate

#realestateSanMigueldeAllende

#lots&landSanMigueldeAllende #lotsforsaleSanMigueldeAllende #landforsale

Location





SELVA & Co.
COMERCIAL

MX 984 803 2058 / US 805 308 2900
www.selvacomercial.com