



**SELVA & Co.**  
COMERCIAL

[www.selvacomercial.com](http://www.selvacomercial.com)



# Multifamily lot of 9,479 m2 in community with club house for sale, San Miguel de Allende.

<i>ID: DLASM204-5</i>	<i>Location: San Miguel de Allende</i>
<i>Zone: San Miguel</i>	<i>Type: Land</i>
<i>Land: 9,479 m2 / 102,031.96 ft</i>	<i>Land ha: 0.95 ha / 2.34 ac</i>



SELVA & Co.  
COMERCIAL



EXIT TO QUERETARO  
7 MINUTES (1.8 Mi)  
ROAD TO PICACHOS



LA LUCIERNAGA MALL  
LIVERPOOL  
5 MINUTES (2.4 Mi)  
ROAD TO ALCOGER





SELVA & Co.  
COMERCIAL



SELVA & Co.  
COMERCIAL



EXIT TO QUERETARO  
7 MINUTES (1.8 Mi)



LA LUCIERNAGA MALL  
LIVERPOOL  
5 MINUTES (2.4 Mi)



SELVA & Co.  
COMERCIAL



LOS PICACHOS



ROAD TO ALCOCER

CAMINO A PICACHOS



FRANQUICIAS  
FRANCHISES

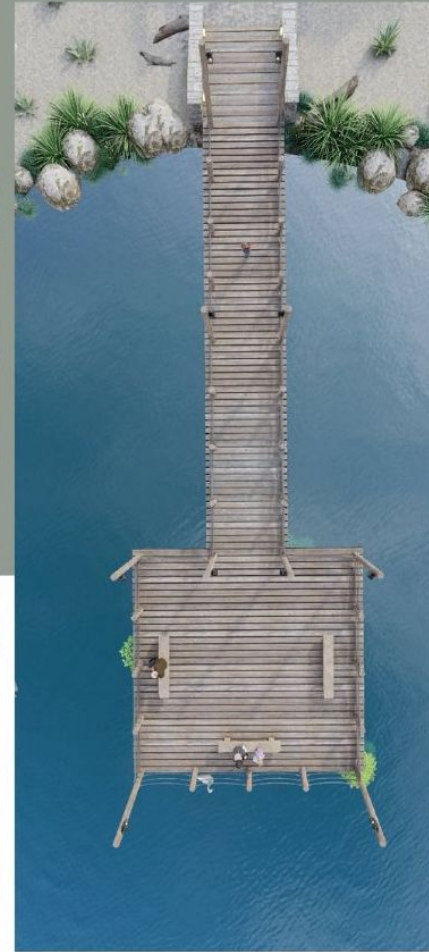


 SELVA & Co.  
COMERCIAL



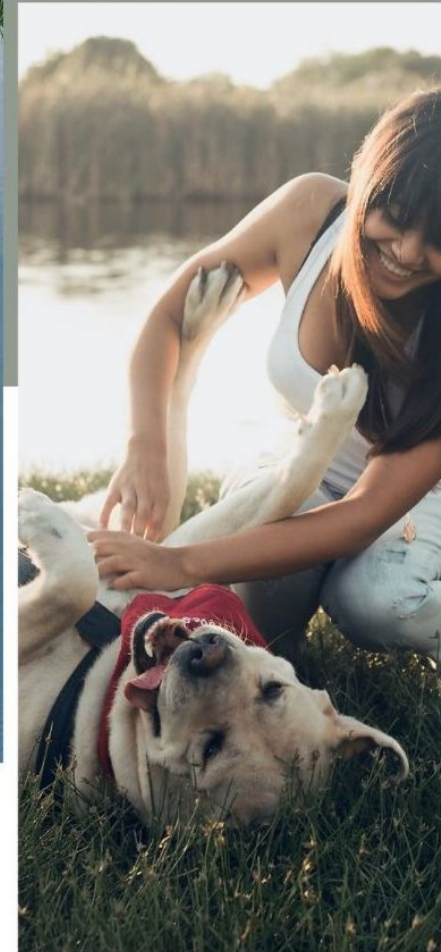
CAPILLA  
*Chapel*

SENDEROS  
*Walking Trails*



LAGO  
*Lake*

PARQUE CANINO  
*Dog park*





SALÓN DE EVENTOS  
*Event Hall*

HOTEL



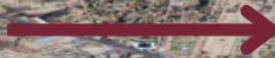
HUERTO  
*Orchard*

GLAMPING



CASA DE DESCANSO  
*Rest house for the elderly*

**Golf Malaquín  
Golf Club**



**Centro  
Downtown**



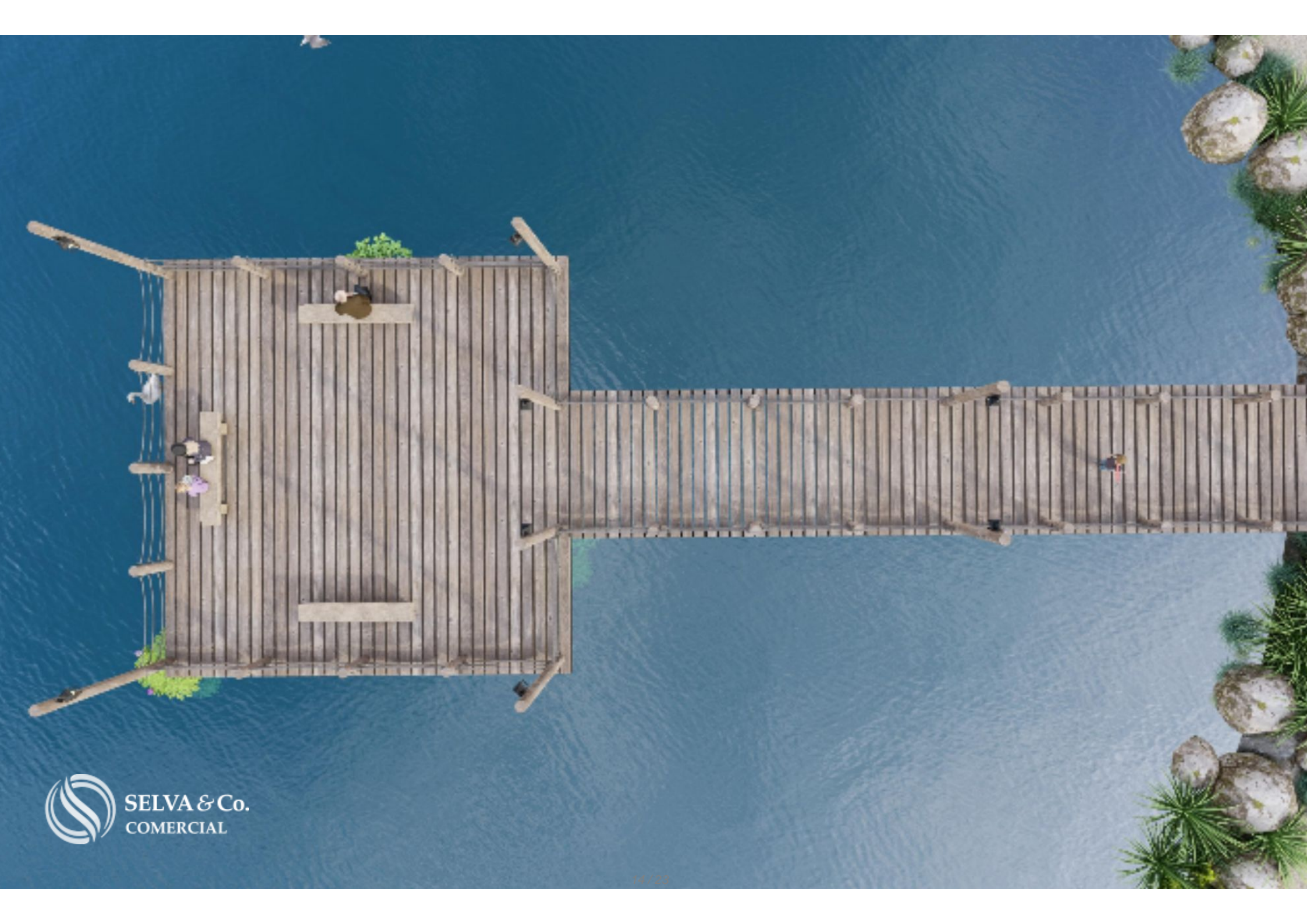
**Centro Comercial  
"Luciernaga"  
Shoppingmall**

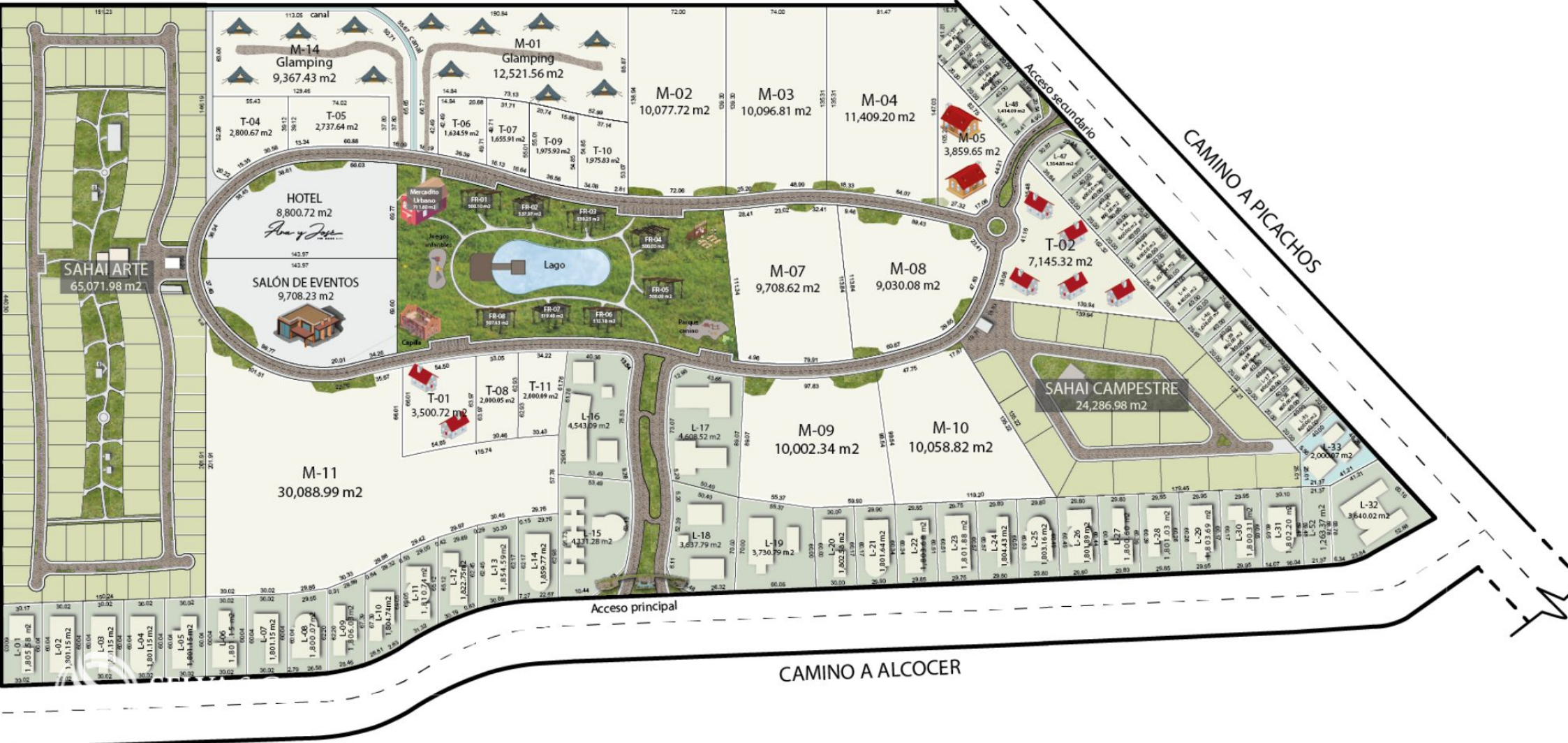


SELVA & Co.  
COMERCIAL

**TERRENO  
LOT**







## Plaza central





**Centro - Downtown  
San Miguel de Allende**

## Description

DLSM204-5

Multifamily lot of 9,479 m<sup>2</sup> in community with club house for sale, San Miguel de Allende.

Multifamily macrolot located in San Miguel de Allende, just 10 minutes from downtown and 5 minutes from the Querétaro exit.

Located within an artistic, cultural, social, and ecological residential complex. Composed of lots and investment macrolots, designed as a project where various uses interact: residential, commercial, and services.

The development includes commercial plans.

AMENITIES

Clubhouse

Chapel

Trails

Lake

Dog park

Event hall

Hotel

School

Orchard

Glamping

Rest home

Controlled access

## SERVICES

Paved streets

Water service

Electricity

Drainage

## LAND CHARACTERISTICS

Services at the lot line

Land use: Medium-density residential

## PROPERTY STATUS

Property title, legal certainty.

## LOCATION

Lot for sale in San Miguel de Allende, a growing area near new developments, shopping plazas, schools, and more.

5 minutes from Liverpool, Soriana, and Cinopolis (Plaza Luciernaga).

10 minutes from San Miguel de Allende downtown.

If you want more information about the land or learn more about the real estate market in San Miguel de Allende, contact us. We will be happy to assist you in your new investment.

The official price of this property is in pesos; the price in dollars is a reference. For the purchase, the exchange rate of the day will be used.

Schedule your appointment to visit the area or call us to resolve your doubts.

#SanMigueldeAllende

#SanMigueldeAllendeproperties

#SanMigueldeAllendelistings

#selvacorealty

#tSanMigueldeAllenderealestate

#realestateSanMigueldeAllende

#lots&landSanMigueldeAllende #lotsforsaleSanMigueldeAllende #landforsale

# Location





**SELVA & Co.**  
**COMERCIAL**

MX 984 803 2058 / US 805 308 2900  
[www.selvacomercial.com](http://www.selvacomercial.com)