



SELVA & Co.
COMERCIAL

www.selvacomercial.com



Commercial lot in gated community with clubhouse, for sale, San Miguel de Allende.

<i>ID: DLASM204-3</i>	<i>Location: San Miguel de Allende</i>
<i>Zone: San Miguel</i>	<i>Type: Land</i>
<i>Land: 4,331 m2 / 46,618.88 ft</i>	<i>Land ha: 0.43 ha / 1.07 ac</i>



SELVA & Co.
COMERCIAL



SELVA & Co.
COMERCIAL

EXIT TO QUERETARO
7 MINUTES (1.8 Mi)
ROAD TO PICACHOS



LA LUCIERNAGA MALL
LIVERPOOL
5 MINUTES (2.4 Mi)
ROAD TO ALCOGER





SELVA & Co.
COMERCIAL





FRANQUICIAS

FRANCHISES



 SELVA & Co.
COMERCIAL



CAPILLA
Chapel

SENDEROS

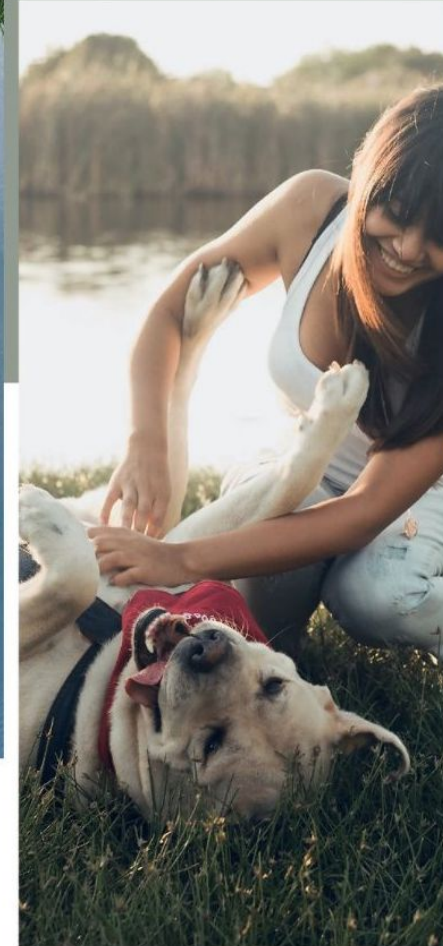
Walking Trails



LAGO
Lake

PARQUE CANINO

Dog park





SALÓN DE EVENTOS
Event Hall

HOTEL

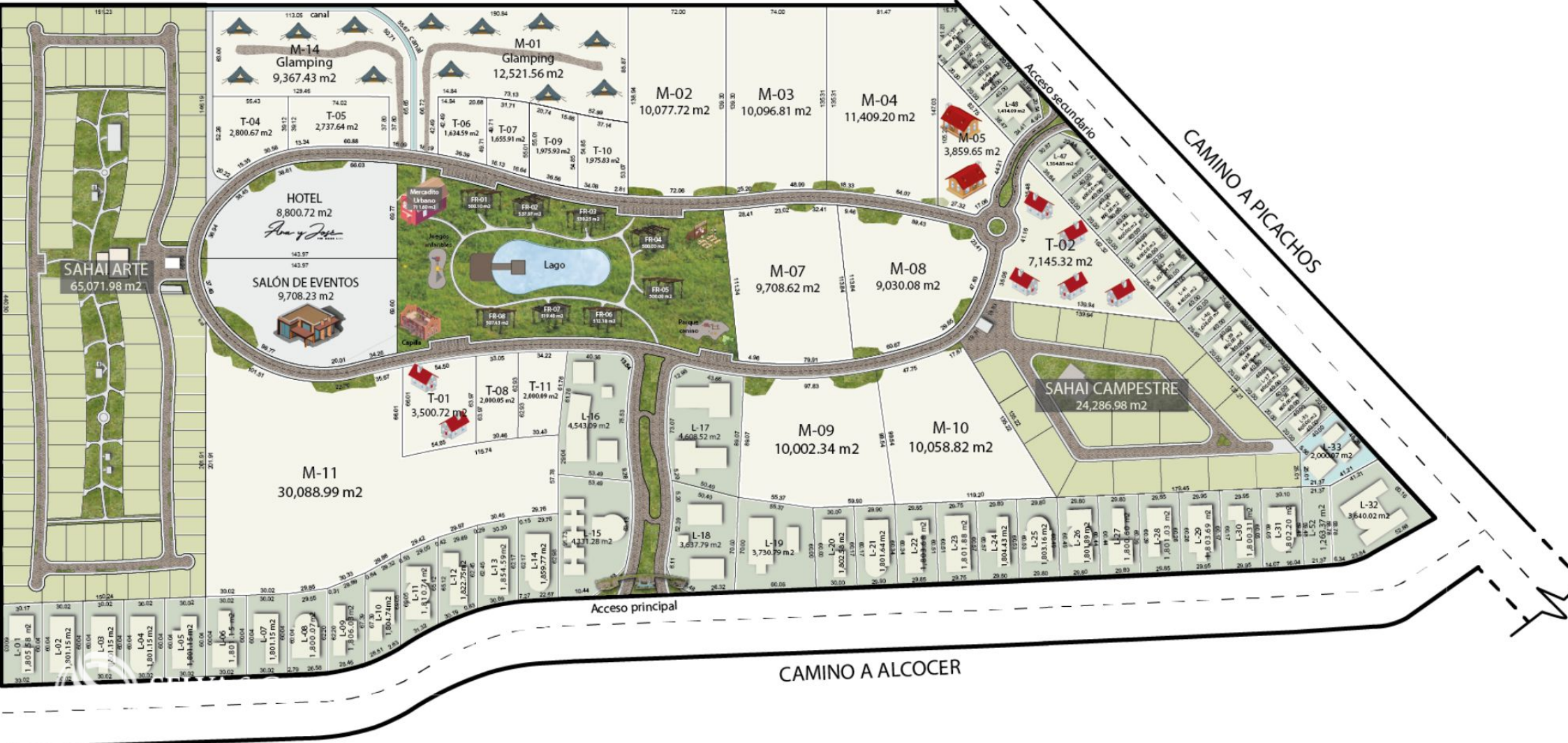


HUERTO
Orchard

GLAMPING



CASA DE DESCANSO
Rest house for the elderly



**Golf Malaquín
Golf Club**



**Centro
Downtown**



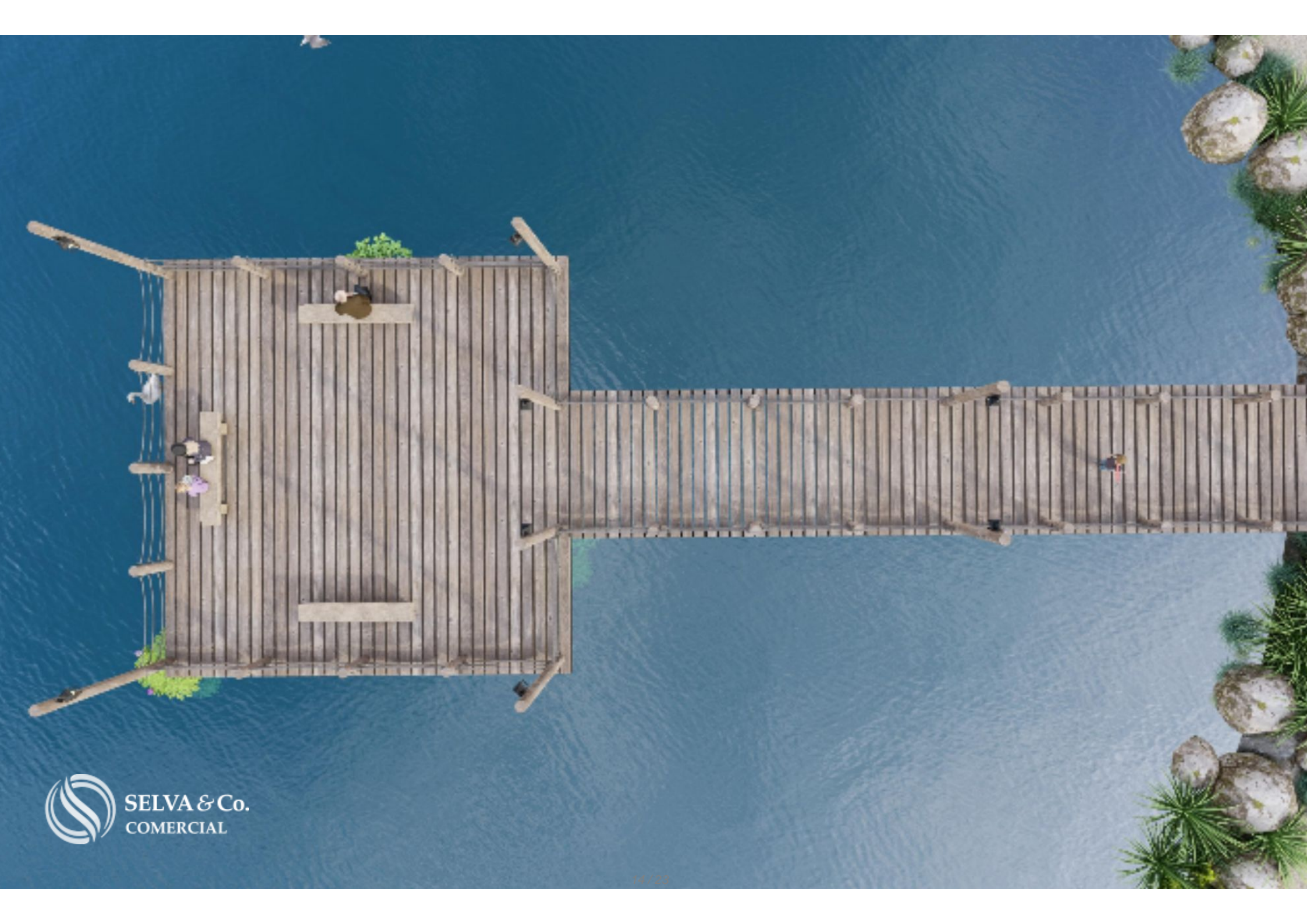
**Centro Comercial
"Luciernaga"
Shoppingmall**



SELVA & Co.
COMERCIAL

**TERRENO
LOT**







EXIT TO QUERETARO
7 MINUTES (1.8 Mi)



LA LUCIERNAGA MALL
LIVERPOOL
5 MINUTES (2.4 Mi)



SELVA & Co.
COMERCIAL



LOS PICACHOS



ROAD TO ALCOCER

CAMINO A PICACHOS

Plaza central





**Centro - *Downtown*
San Miguel de Allende**

Description

DLSM204-3

Commercial lot in gated community with clubhouse, for sale, San Miguel de Allende.

Comercial land located in San Miguel de Allende, just 10 minutes from downtown and 5 minutes from the Querétaro exit.

Located within an artistic, cultural, social, and ecological residential complex. Composed of lots and investment macrolots, designed as a project where various uses interact: residential, commercial, and services.

The development includes commercial plans.

AMENITIES

Clubhouse

Chapel

Trails

Lake

Dog park

Event hall

Hotel

School

Orchard

Glamping

Rest home

Controlled access

SERVICES

Paved streets

Water service

Electricity

Drainage

LAND CHARACTERISTICS

Services at the lot line

Land use: Commercial and services, medium intensity.

PROPERTY STATUS

Property title, legal certainty.

LOCATION

Lot for sale in San Miguel de Allende, a growing area near new developments, shopping plazas, schools, and more.

5 minutes from Liverpool, Soriana, and Cinopolis (Plaza Luciernaga).

10 minutes from San Miguel de Allende downtown.

If you want more information about the land or learn more about the real estate market in San Miguel de Allende, contact us. We will be happy to assist you in your new investment.

The official price of this property is in pesos; the price in dollars is a reference. For the purchase, the exchange rate of the day will be used.

Schedule your appointment to visit the area or call us to resolve your doubts.

#SanMigueldeAllende

#SanMigueldeAllendeproperties

#SanMigueldeAllendelistings

#selvacorealty

#tSanMigueldeAllenderealestate

#realestateSanMigueldeAllende

#lots&landSanMigueldeAllende #lotsforsaleSanMigueldeAllende #landforsale

Location





SELVA & Co.
COMERCIAL

MX 984 803 2058 / US 805 308 2900
www.selvacomercial.com