



SELVA & Co.
COMERCIAL

www.selvacomercial.com



5,055.37 m²

Multifamily land of 5,055 m2 minutes from the sea, for sale in Aldea Zama Tulum.

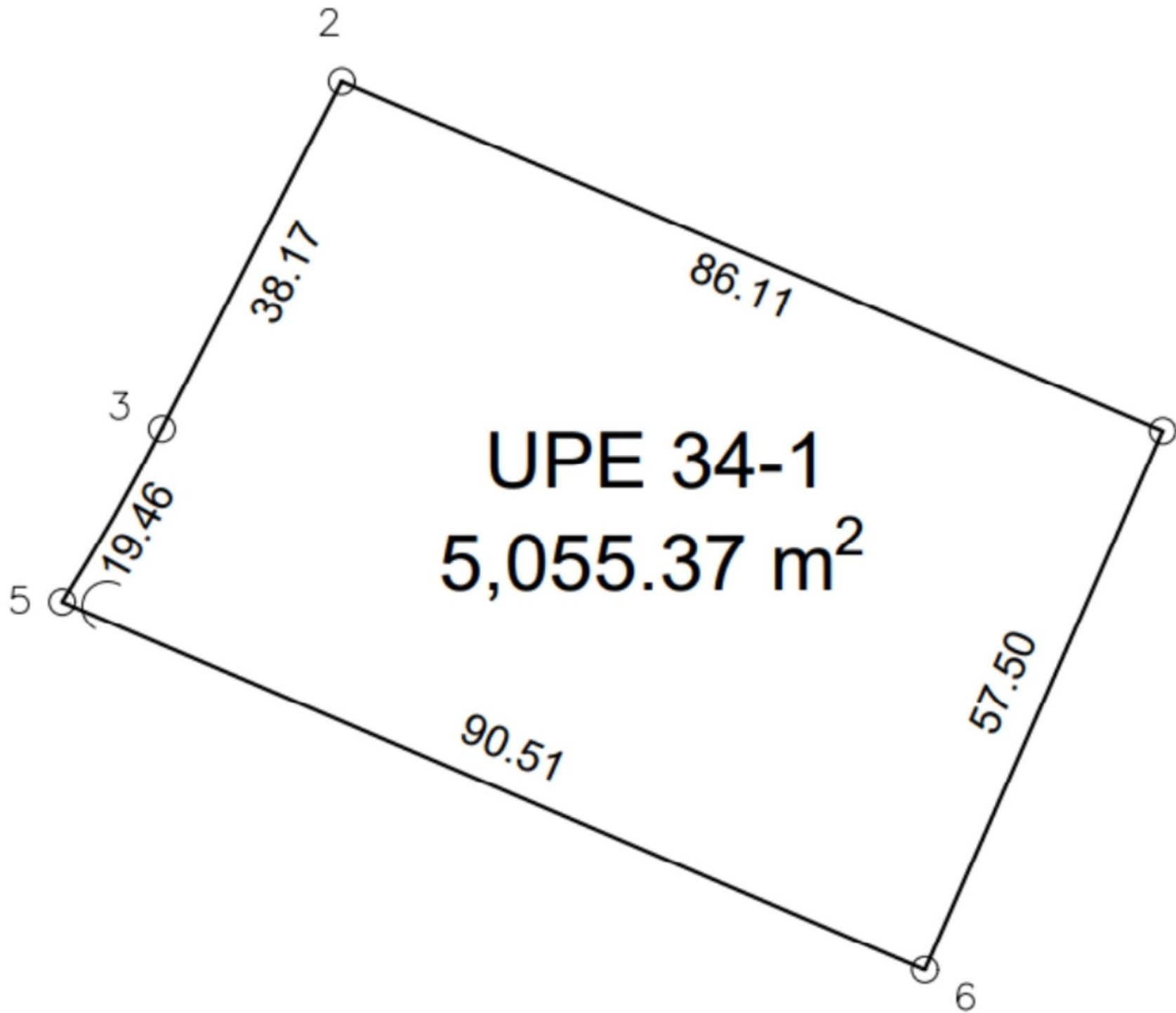
<i>ID: DLTU234-3</i>	<i>Location: Tulum</i>
<i>Zone: Aldea Zama</i>	<i>Type: Land</i>
<i>Land: 5,055 m2 / 54,412.02 ft</i>	<i>Land ha: 0.51 ha / 1.25 ac</i>



5,055.37 m²



**SELVA & Co.
COMERCIAL**



ZAMÁ
DESARROLLOS
SALES OFFICE


ALDEA ZAMA



PREMIUM III

ALDEA


CONVERGE

Mondo

Dharma

Ahimsa

Av. Cobá


green school
TULUM


SELVA & Co.
COMERCIAL

AZULIK KIDS

Art Park

AZULIK VILLAS
TULUM









SELVA & Co.
COMERCIAL







Playas Tulum
Tulum Beaches



Zona Hotelera
Hotel zone



TERRENO
LOT

Cenote
Aldea Zama



La veleta

Tulum Centro
Downtown

Avenida Coba camino a Zona Hotelera - Coba Avenue Hotel Zone Road

Aldea Zama



TERRENO - LOT

Avenida Kukulkan camino al mar - Kukulkan avenue Road to the sea



SELVA & Co.
COMERCIAL





SELVA & Co.
COMERCIAL













SELVA & Co.
COMERCIAL



Playa - Beach
SELVA & Co.
"Las Palmas"



Tulum Centro *Downtown*



Zona hotelera - *Hotel zone*



Description

DLTU234-3

Multifamily land of 5,055 m² minutes from the sea, for sale in Aldea Zama Tulum.

Multifamily land for developers and investors in a new Residential community in Aldea Zama, the first planned community in Tulum.

This land offers a privileged location with underground services, extensive green areas, and a bike path connecting to the hotel zone, downtown, and the beach, all just 15 minutes away by bike, without the need for a car.

In addition, Aldea Zama has a vibrant commercial district that houses a variety of restaurants, boutique hotels, cozy cafes, and exclusive original design shops.

INVESTMENT OPPORTUNITY

The high real estate demand in Tulum, driven by its economic and tourist resources, has generated new communities that harmonize with nature. These areas, designed to preserve the environment, also represent exceptional investment opportunities.

CUTTING-EDGE NEW COMMUNITY IN TULUM

Selvazama is a visionary residential project that aims to create a sustainable future in the Riviera Maya. This new and ambitious project is designed to rescue the vision of values and urban connection.

LAND FEATURES

Services at the property's foot

Land use: Tourist, High-density residential.

Cos: 0.3974

Cus: 0.8277

Number of homes: 29

Maximum height: 12 meters

Maximum levels: 3 levels

SERVICES

Paved streets

Underground services

Water service

Light

Drainage

PROPERTY STATUS

Property title, legal certainty.

LOCATION

Land for sale in Aldea Zama, Tulum, residential area, surrounded by restaurants, boutiques, hotels, and entertainment.

10 minutes by bike from the Tulum Hotel Zone

10 minutes by bike from "Las Palmas" Beach

10 minutes by bike from Downtown Tulum

If you would like more information about the Land or to learn more about the real estate market in the Aldea Zama area, contact us, we will be happy to help you with your new investment in Tulum.

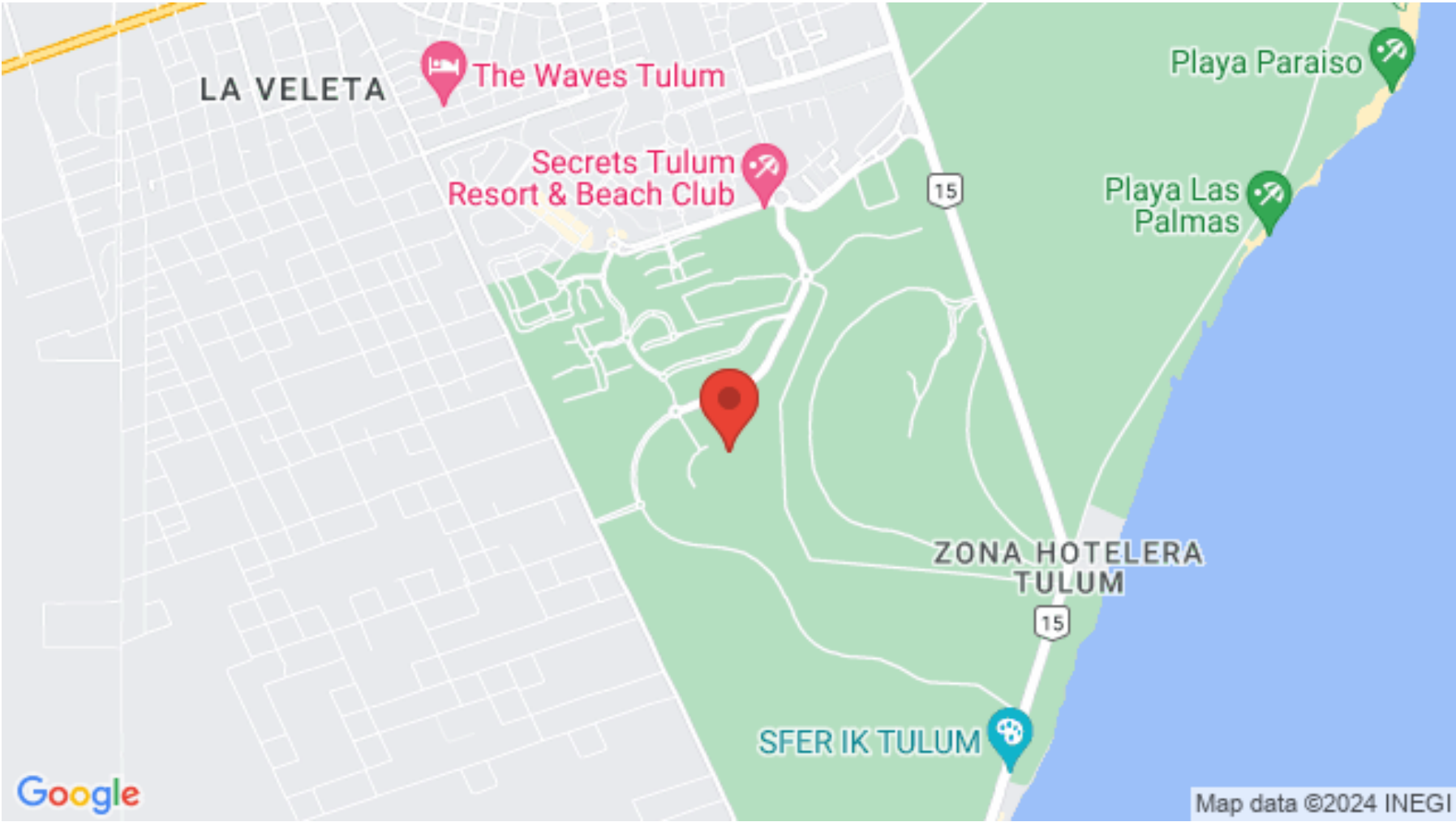
The official price of this property is in Dollars, the price in Pesos is a reference. For the purchase, the exchange rate of the day will be used.

Schedule your appointment to visit the area or call us to resolve your doubts.

#Tulum #Tulumproperties #Tulumlistings #selvacorealty #tulumrealestate
#realestatetulum #selvacomercial #commercialrealestate
#landbankingTulum #landbankingTulum #lotsandlandTulum

#lotsforsaleTulum #landforsale #lotsforsaleTulum #macrolotsTulum

Location





SELVA & Co.
COMERCIAL

MX 984 803 2058 / US 805 308 2900
www.selvacomercial.com