



**SELVA & Co.**  
COMERCIAL

[www.selvacomercial.com](http://www.selvacomercial.com)



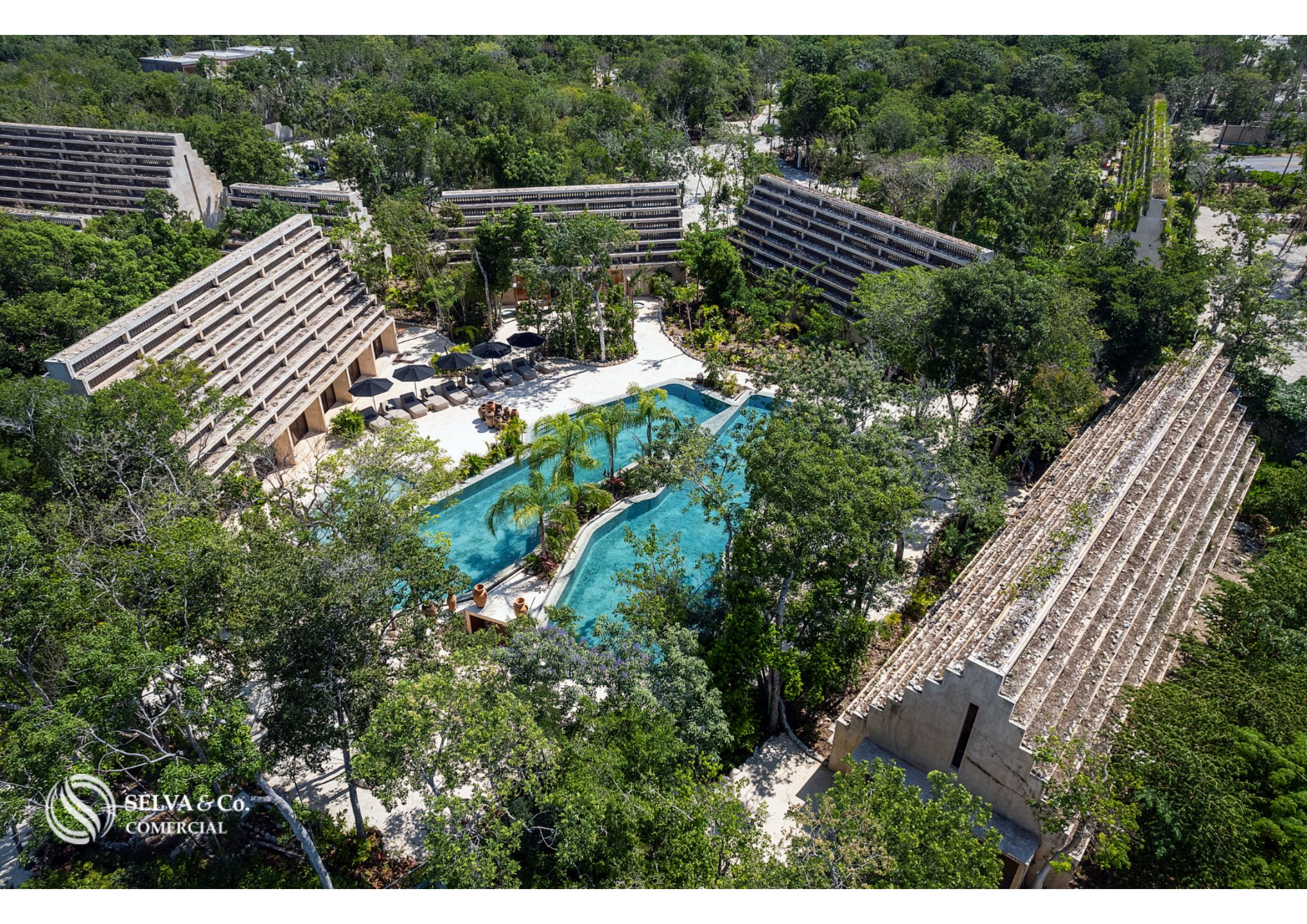
# Premium macro lot of 1,549 m2, in a private residential area, for sale in Tulum.

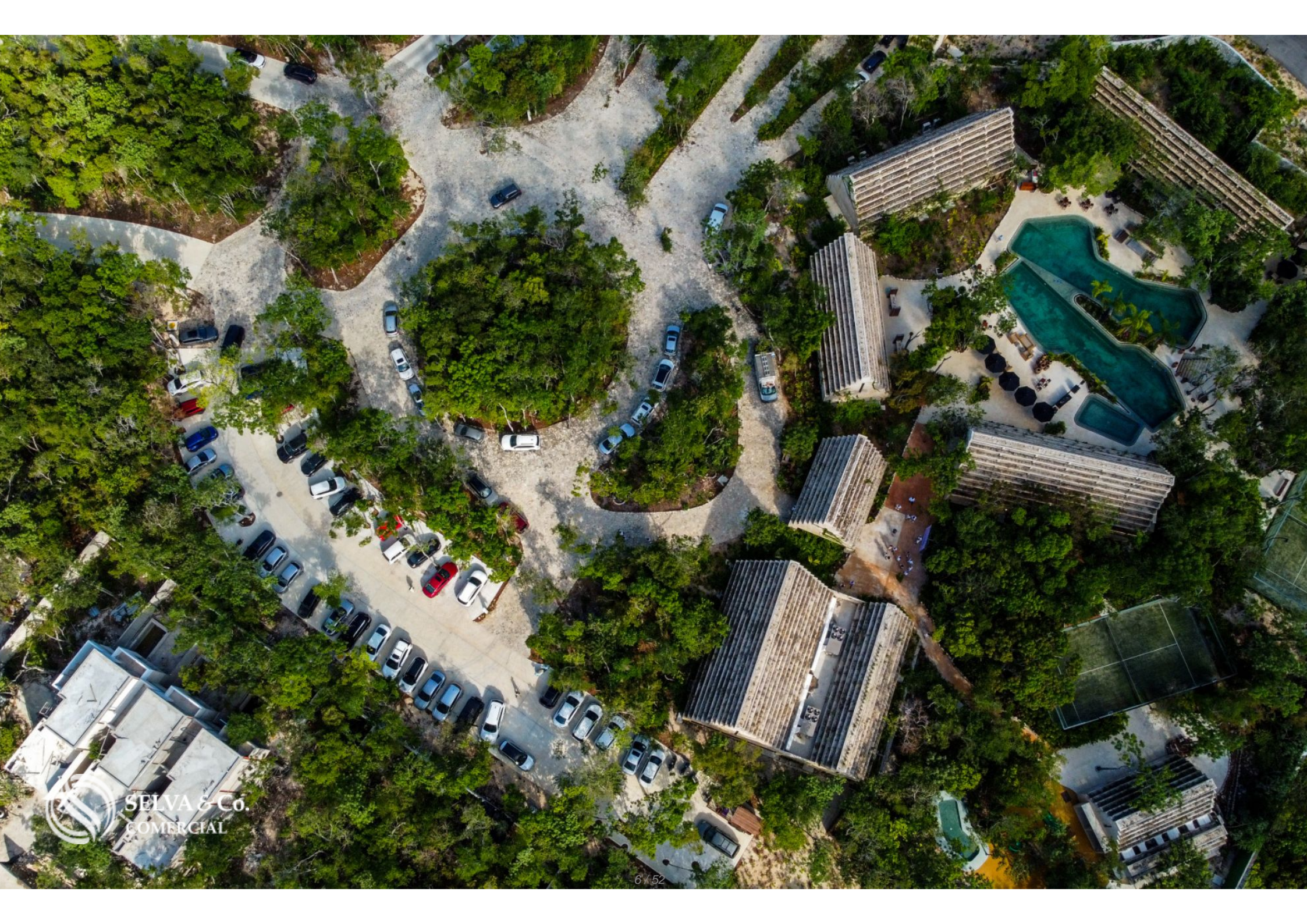
|                                      |                                   |
|--------------------------------------|-----------------------------------|
| <i>ID: DLTU214-2</i>                 | <i>Location: Tulum</i>            |
| <i>Zone: Kool Kaab</i>               | <i>Type: Land</i>                 |
| <i>Land: 1,549 m2 / 16,673.44 ft</i> | <i>Land ha: 0.15 ha / 0.38 ac</i> |

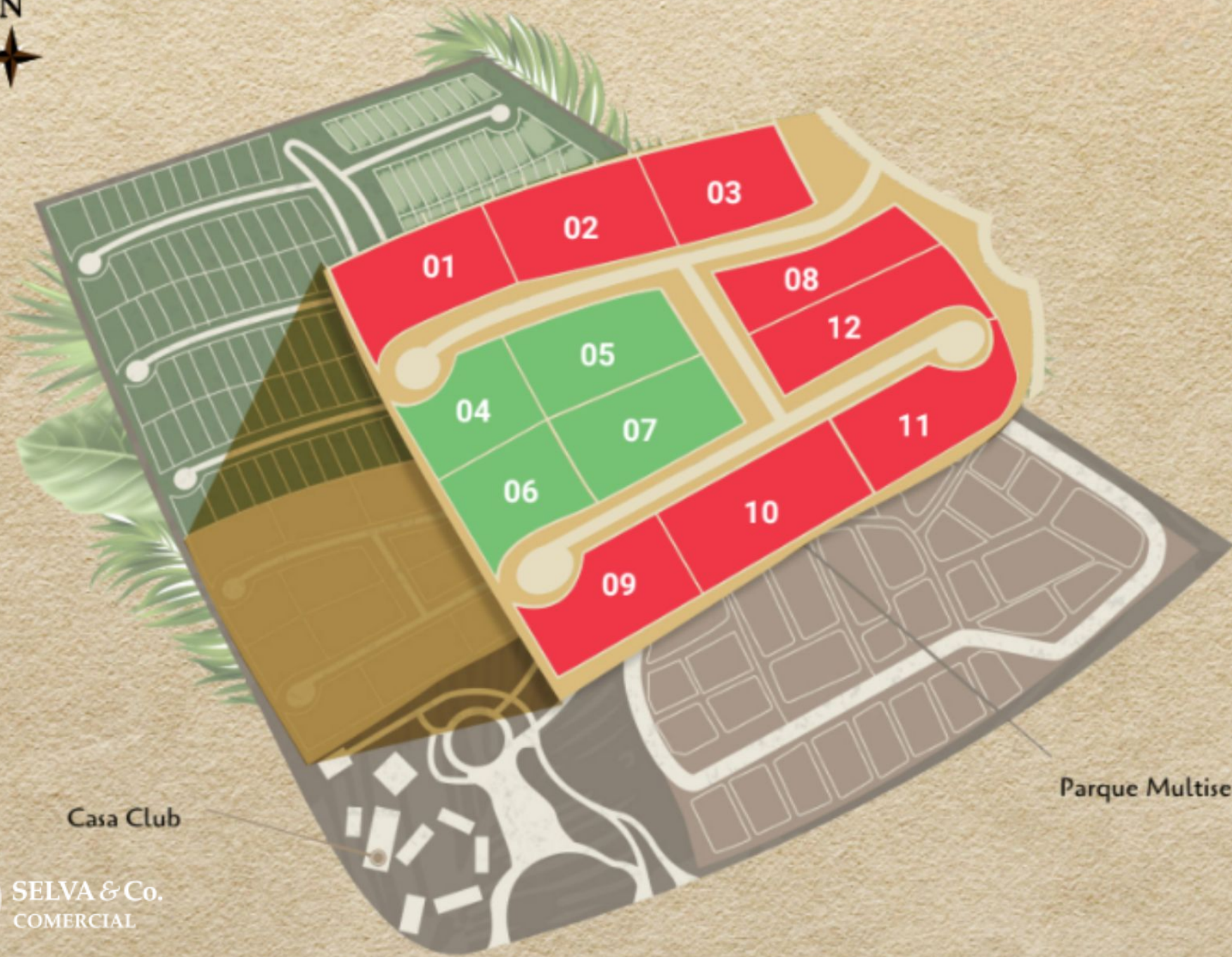




SELVA & Co.  
COMERCIAL







Casa Club

Parque Multisensorial



SELVA & Co.  
COMERCIAL







**Zona hotelera**  
*Hotel zone*

**Centro**  
*Downtown*

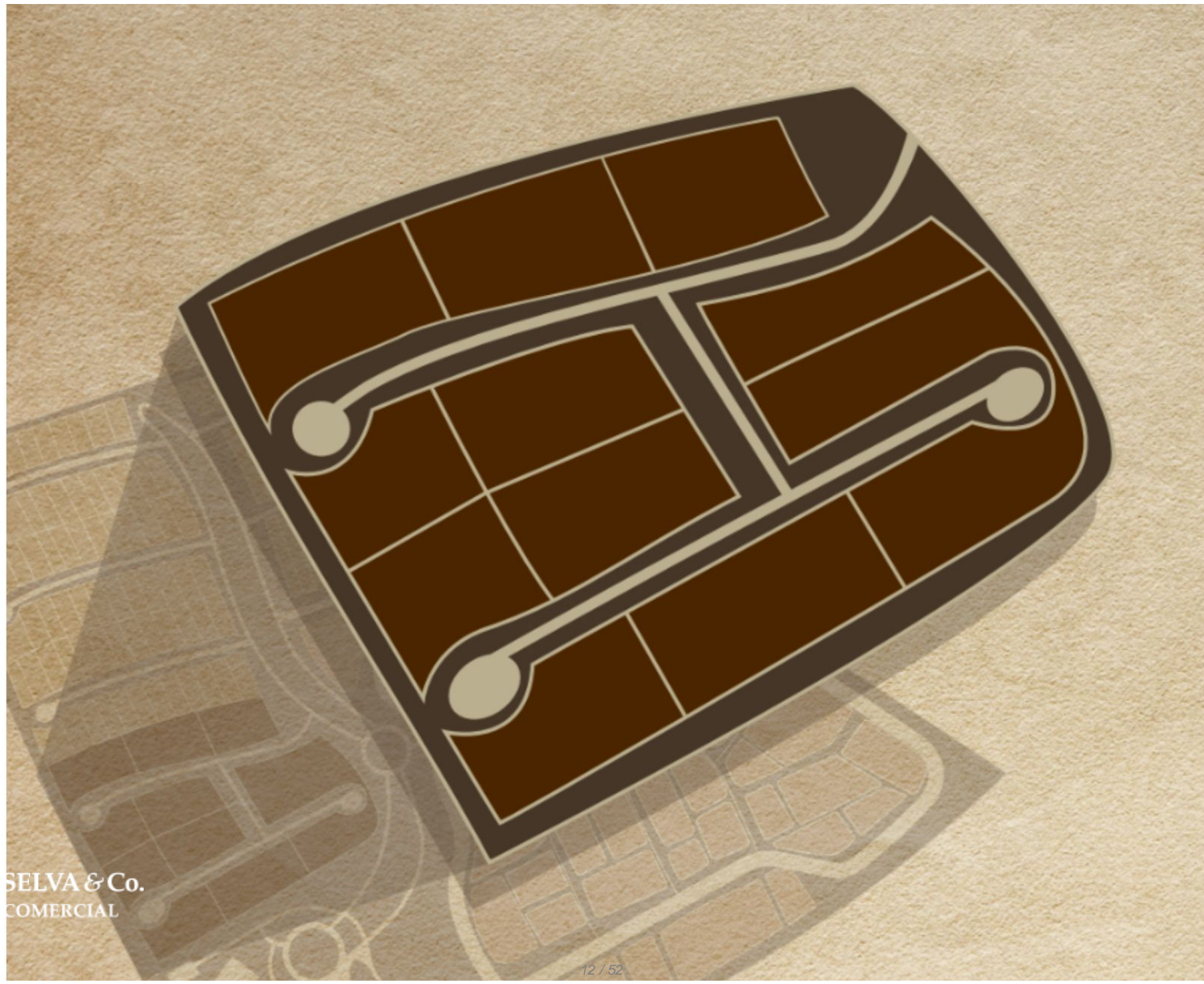
**Supermercado**  
*Supermarket*



**TERRENO**  
*LOT*

**Ruinas de Tulum**  
*Tulum Ruins*

**Playa - Beach**



SELVA & Co.  
COMERCIAL











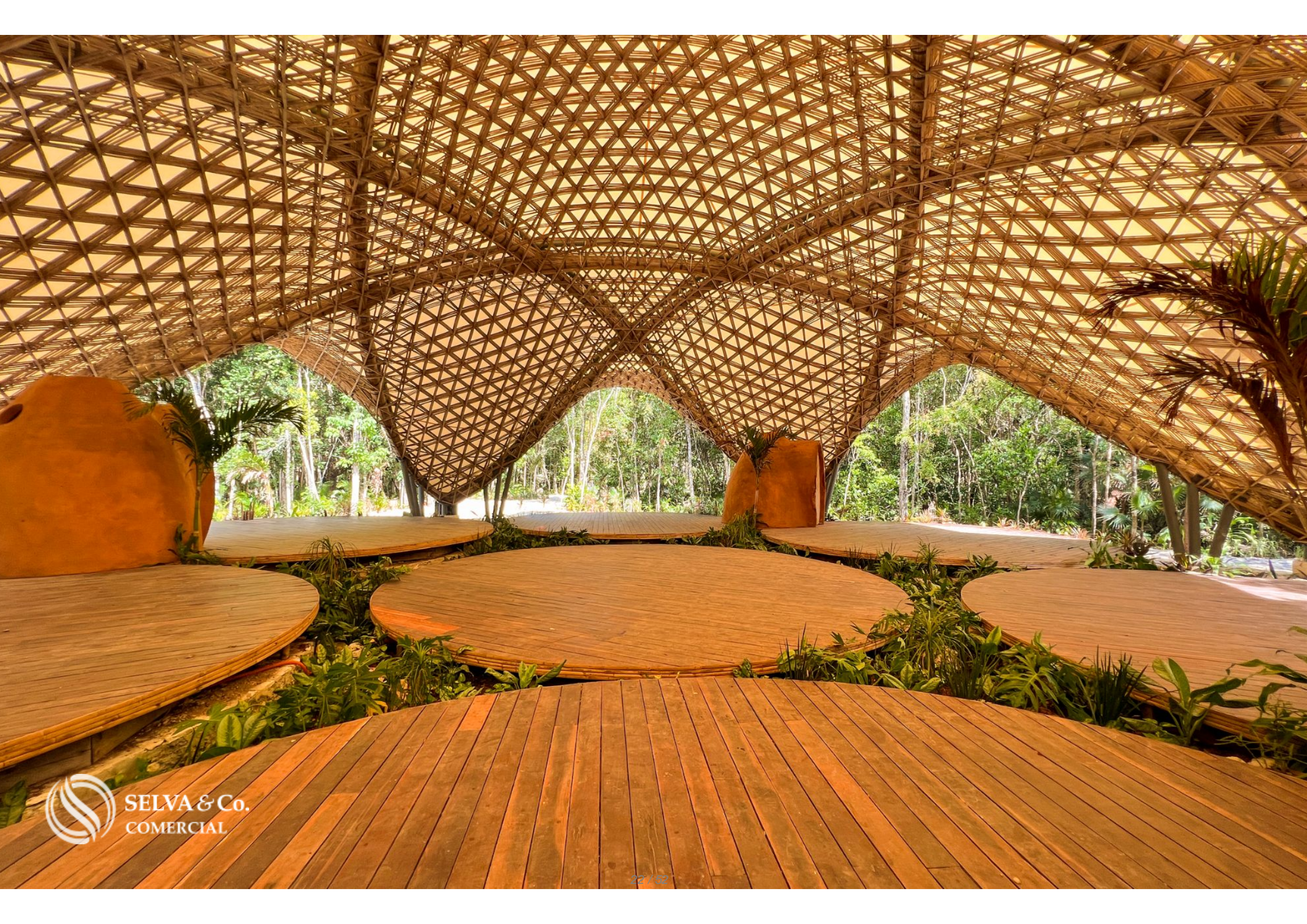


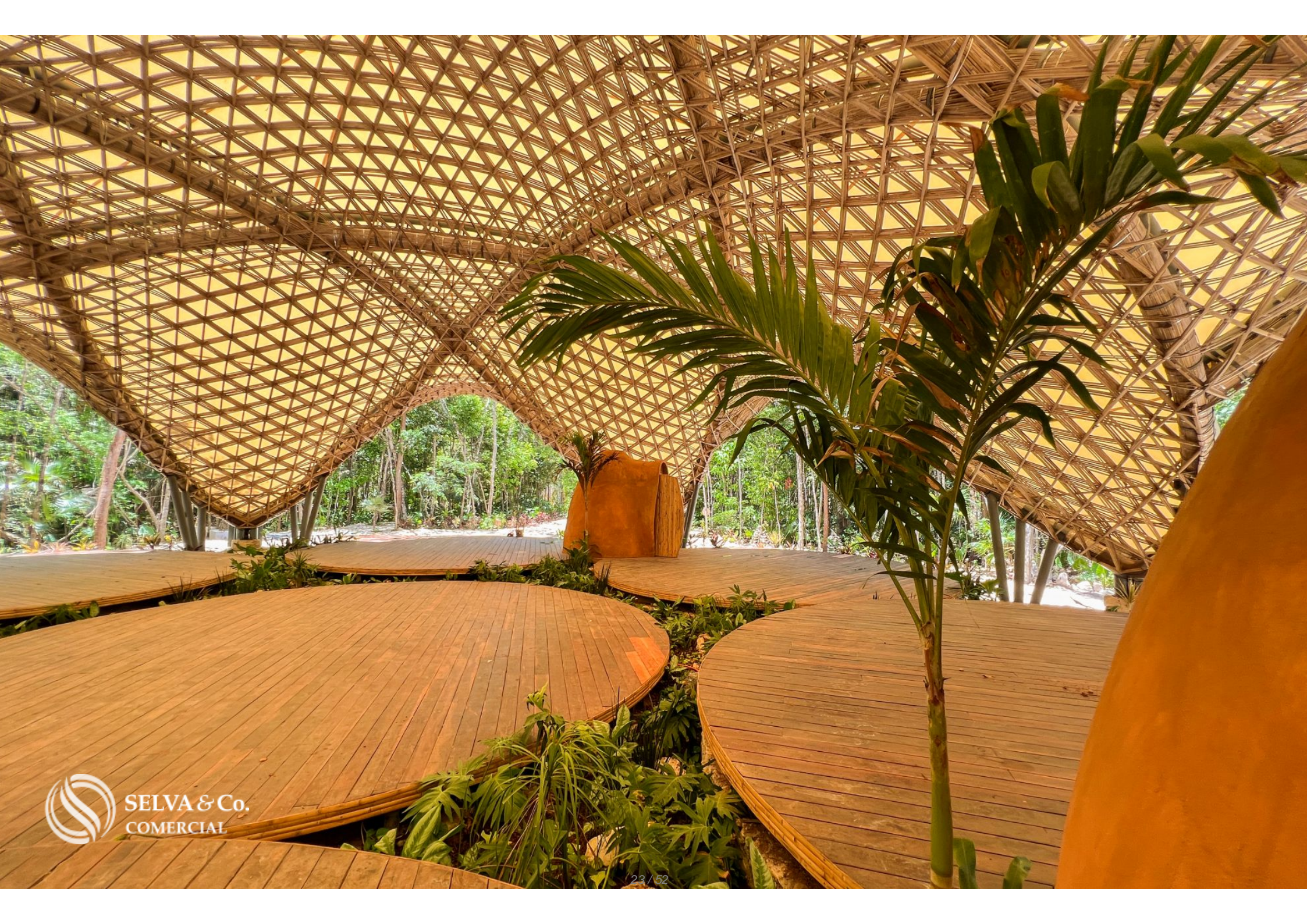
SELVA & Co.  
COMERCIAL

















SELVA & Co.  
COMERCIAL











SELVA & Co.  
COMERCIAL



 SELVA & Co.  
COMERCIAL









SELVA & Co.  
COMERCIAL



ESTACIÓN  
**TREN  
MAYA**  
TSIIMIN K'AAK

Puerta Maya



Parque del Jaguar

Carretera Federal  
Cancún - Tulum

Parque del Jaguar

Mar Caribe

Zona  
Arqueológica

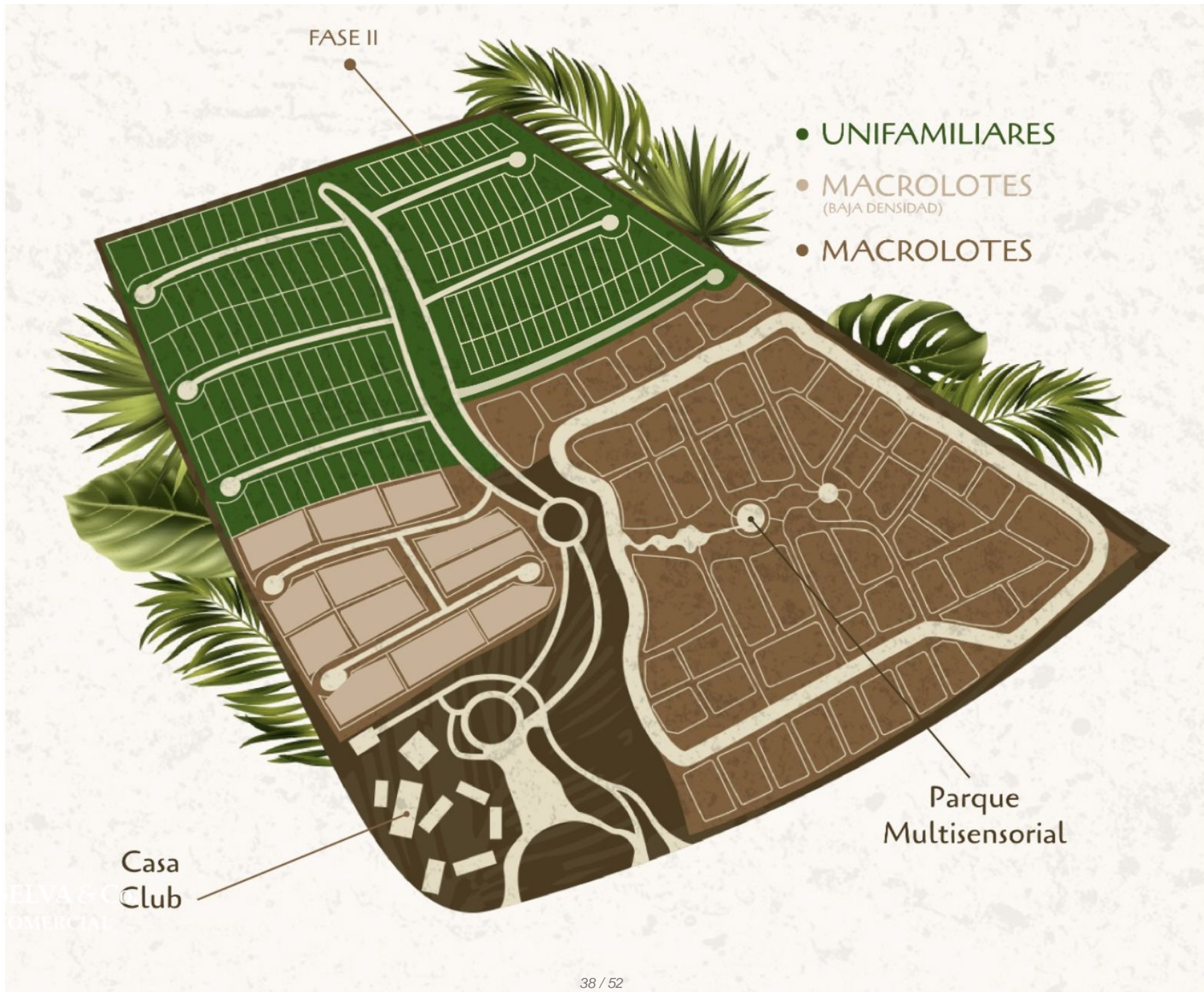
Acceso a Playa

Av. Coba

Av. Coba



Tulum  
Centro  
SELVA & Co.  
COMERCIAL



ELVA & C  
COMERCIAL

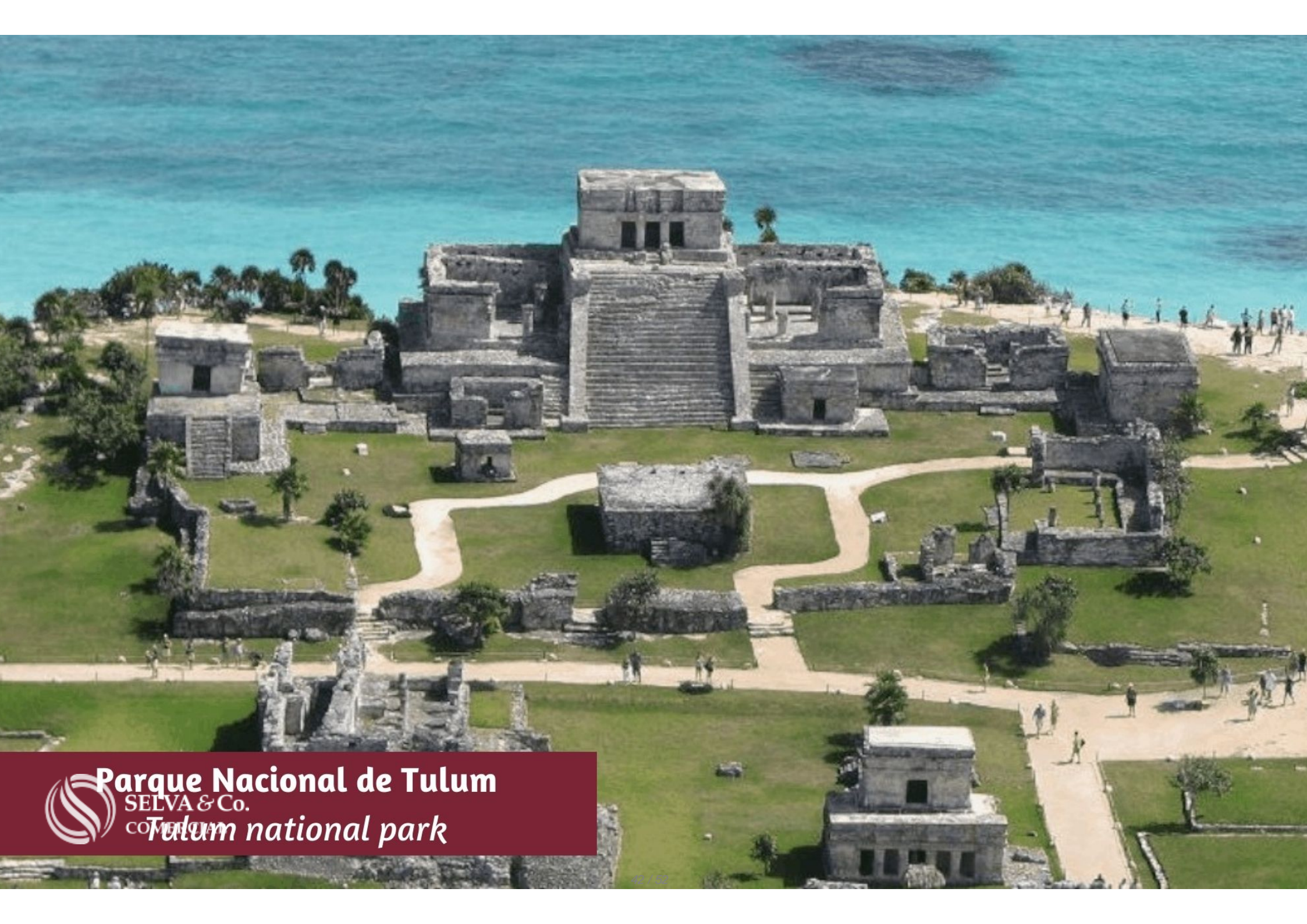


**Playa - Beach**  
SELVA & Co.  
**"Paraiso"**



**Playa - Beach**  
SELVA & Co.  
**"Santa Fe"**

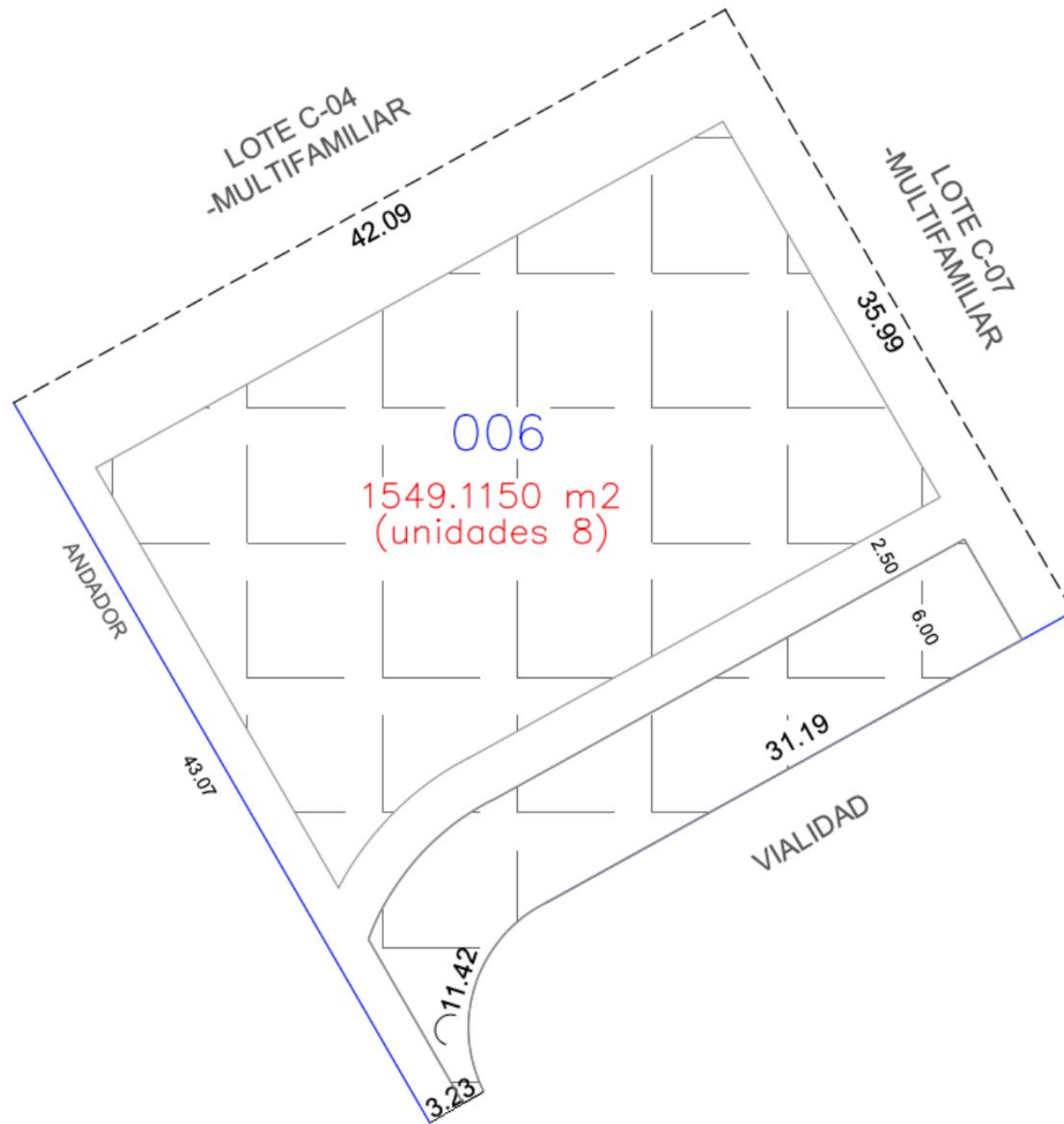




**Parque Nacional de Tulum**

SELVA & Co.

*Tulum national park*



## Description

DLTU214-2

Premium macro lot of 1,549 m2, in a private residential area, for sale in Tulum.

Premium macro lot with perfect spaces for carrying out residential developments such as: Villas, Townhouses, apartments, and exclusive projects.

Located within a development inspired by Mayan architecture, highlighting geometric shapes and the perfection of its constructions.

This development embodies a high-profile concept, providing a space where harmony and tranquility prevail by seamlessly blending architecture with the history of the ancient Mayan civilization.

STAY FIT

Maintain your fitness in the semi-Olympic pool with 4 lanes, play on tennis and paddle courts, enjoy a stroll on pedestrian trails, practice yoga, work out in the gym, or simply relax and admire the incredible architecture and green areas from the viewpoint. You'll have a different activity to do each day, all within steps of your residence.

## SENSORY PARK

A unique concept in Mexico, created with the vision and millennia-old tradition of the Mayans. It consists of three main elements: Entrance, multifunctional center, and viewpoint.

## MULTIPURPOSE HALL

For your social events, find an ideal space to shine as a host, organizing the best parties within the development.

## FOR THE LITTLE ONES

This development caters to a family-friendly environment, providing a children's area where they can learn, play, and have fun. It includes a playground and a children's pool.

## SPA

Find total relaxation just steps from your residence. You'll have a dedicated area to pamper yourself, including a spa with a massage area, steam room, sauna, showers, and a hydro-massage Jacuzzi.

## AMENITIES AND SERVICES

24/7 Security

Gated community

Car lobby

Parking

Reception

Events hall

Social area

Terrace

Snack area

Sunbathing areas

Semi-Olympic pool

Children's pool

Children's play area

Paddle court

Gym

Yoga room

Spa

Changing rooms

## LAND FEATURES

Services at the foot of the land

Land use: Residential

Cos: 60%

Cus: 170%

Height 12 meters / 3 levels.

Density 7 units

## SERVICES

Paved streets

Water service

Electricity

Drainage.

## PROPERTY STATUS

Title deed, legal certainty.

## LOCATION

Land for sale in the North Zone, Tulum, Residential area close to downtown, white

sandy beaches, and tourist attractions.

5 minutes from the Tulum Archaeological Zone.

10 minutes from the beach.

45 minutes from Playa del Carmen.

50 minutes from Tulum International Airport.

## DELIVERY DATE

Land available for immediate delivery.

If you would like more information about the land or to learn more about the real estate market in the Tulum area, contact us; we will be happy to help you on your new investment.

The official price of this property is in pesos; the price in dollars is a reference. The exchange rate of the day will be used for the purchase.

Schedule your appointment to visit the area or call us to answer your questions.

#Tulumproperties #Tulum #Tulumlistings #selvacorealty #tulumrealestate  
#realestatetulum #landbankingTulum #lotsandlandTulum #lotsforsaleTulum  
#landforsale

# Location





**SELVA & Co.**  
**COMERCIAL**

MX 984 803 2058 / US 805 308 2900  
[www.selvacomercial.com](http://www.selvacomercial.com)