



SELVA & Co.
COMERCIAL

www.selvacomercial.com



**Palacio
de Hierro
Querétaro**

**Centro Comercial
Shoppingmall**

Lot for developers of 4,272 m2 for sale, Jurica, Querétaro.

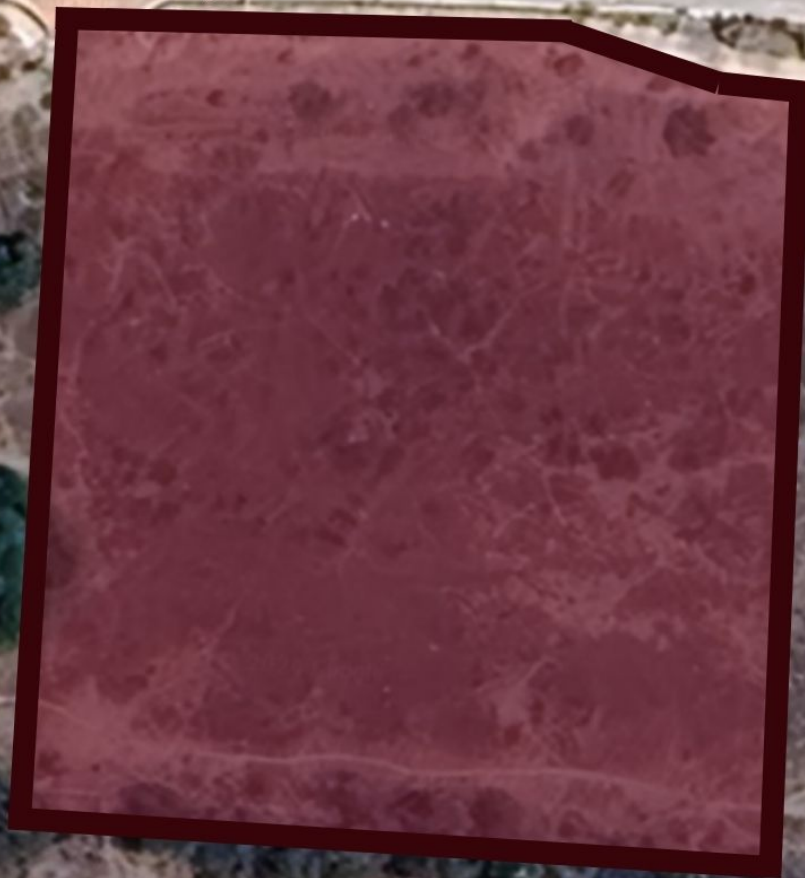
<i>ID: DLQR204-11</i>	<i>Location: Queretaro</i>
<i>Zone: Jurica</i>	<i>Type: Land</i>
<i>Land: 4,272 m2 / 45,983.81 ft</i>	<i>Land ha: 0.43 ha / 1.06 ac</i>

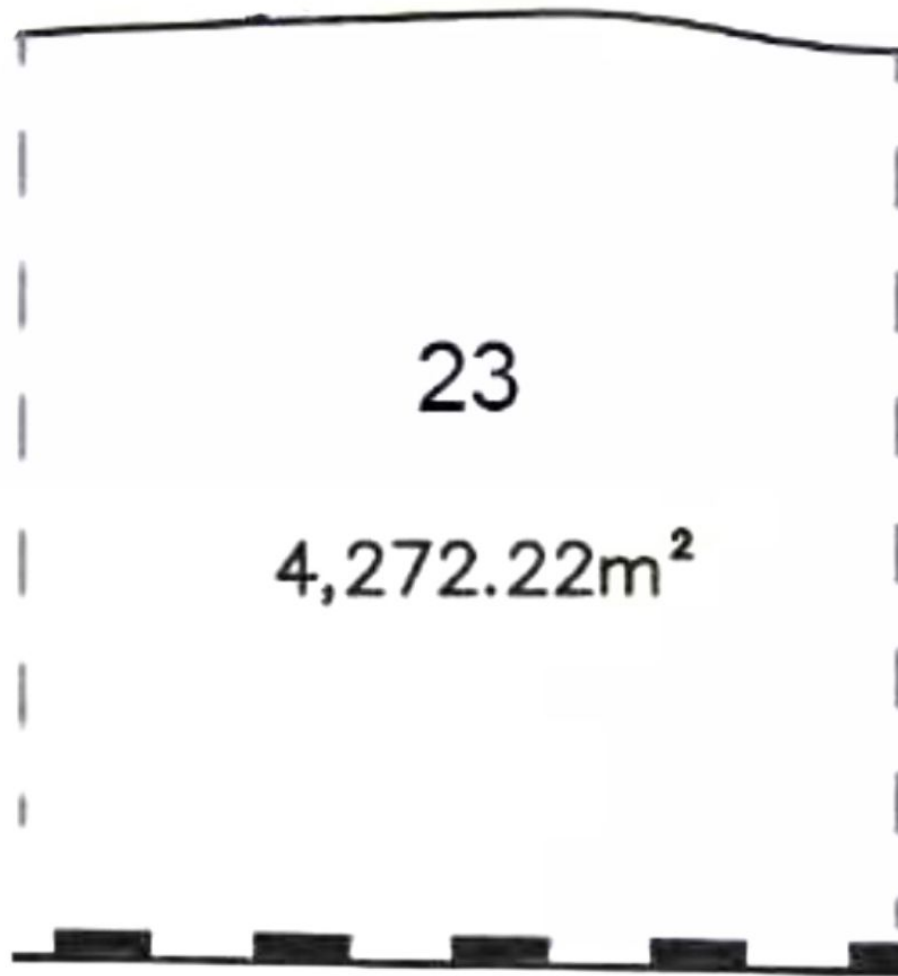


**Palacio
de Hierro
Querétaro**

**Centro Comercial
Shoppingmall**

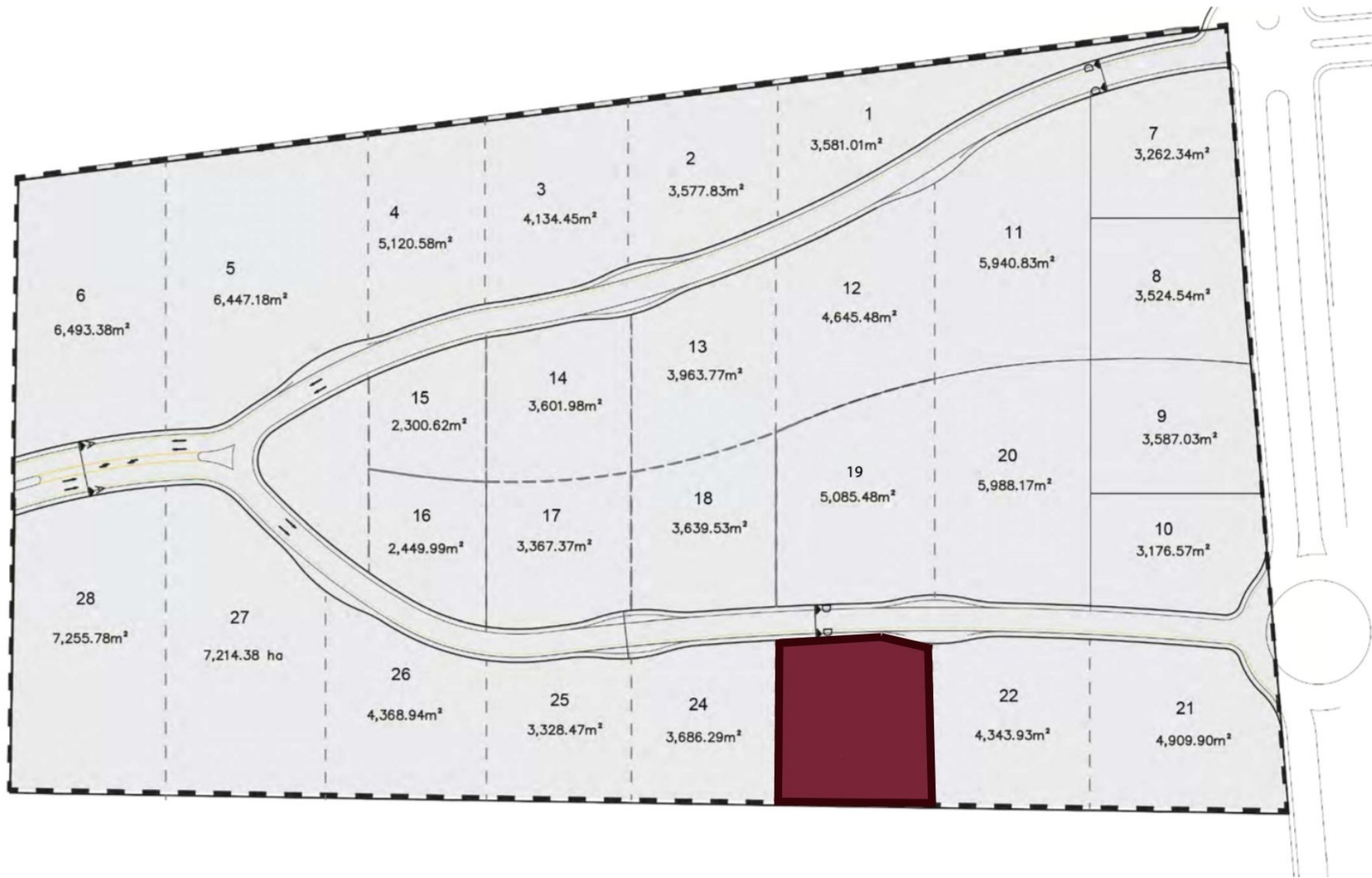
4,272 m²





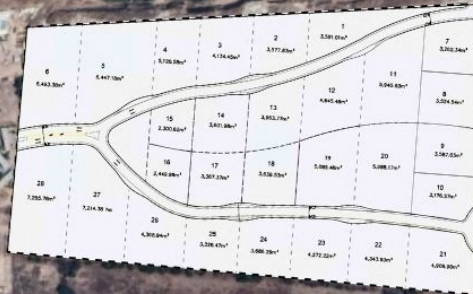
Forma del terreno

Land shape





SELVA & Co.
COMERCIAL



El terreno se ubica aquí
The land is located here



Palacio de hierro Querétaro





 SELVA & Co.
COMERCIAL



Jurica

Juriquilla

**TERRENO
LOT**

**Anillo Vial Fray
Junípero Serra**

**Centro comercial
Shoppingmall**

Camino a SLP

**Supermercado
Supermarket**

**Uptown Center
Shoppingmall**



**SELVA & Co.
COMERCIAL**

Description

DLQR204-11

Lot for developers of 4,272 m2 for sale, Jurica, Querétaro.

Residential land with services strategically located in an area surrounded by new buildings and shopping centers.

Strategically located between Jurica and Juriquilla in Queretaro, also being one block away from the second largest shopping center in Latin America.

Excellent option for investors and developers.

LAND FEATURES

Services at the land

Land use: Residential with Services (H2S)

Cos: 0.6

Cus: 1.8

Height 10.5 m / 3 levels.

Density 40 homes / hectare.

MEASURES

Vertical macro lots from 2,300 m² to 7,256 m².

SERVICES

Paved streets

Water service

Electricity

Drainage

PROPERTY STATUS

Property title, legal certainty.

LOCATION

Macro lot for sale in Jurica Querétaro, a growing commercial area surrounded by new buildings, shopping centers, entertainment, and more.

PLACES JUST MINUTES AWAY FROM THE LOT

Luxury shopping center

Palacio de Hierro Querétaro

Uptown Center Querétaro

Supermarkets just minutes away such as Walmart, Sam's Club, and City Market

Entertainment options: Sky Zone Trampoline Park

Variety of restaurants

Department stores

Banks

If you want more information about the lot or to learn more about the real estate market in the Jurica area, contact us; we will be happy to assist you in your new investment in Querétaro.

The official price of this property is in pesos; the price in dollars is a reference. The exchange rate of the day will be used for the purchase.

Schedule your appointment to visit the area or call us to address your questions.

#Querétaroproperties #Querétaro #Querétarolistings
#selvacorealty #QuerétaroRealEstate #selvacomercial
#commercialrealestateQuerétaro
#commercialpremisesforsaleQuerétaro
#commercialrealestaterealestateQuerétaro
#commercialrealestate #Querétarocommercialrealestate
#Querétarocommerciallistings #landbankingQuerétaro

#commerciallandQuerétaro

#lotsandlandQuerétaro

#lotsforsaleQuerétaro

#landforsale

#landforsaleQueretaro

#macrolotsQuerétaro

Location





SELVA & Co.
COMERCIAL

MX 984 803 2058 / US 805 308 2900
www.selvacomercial.com