



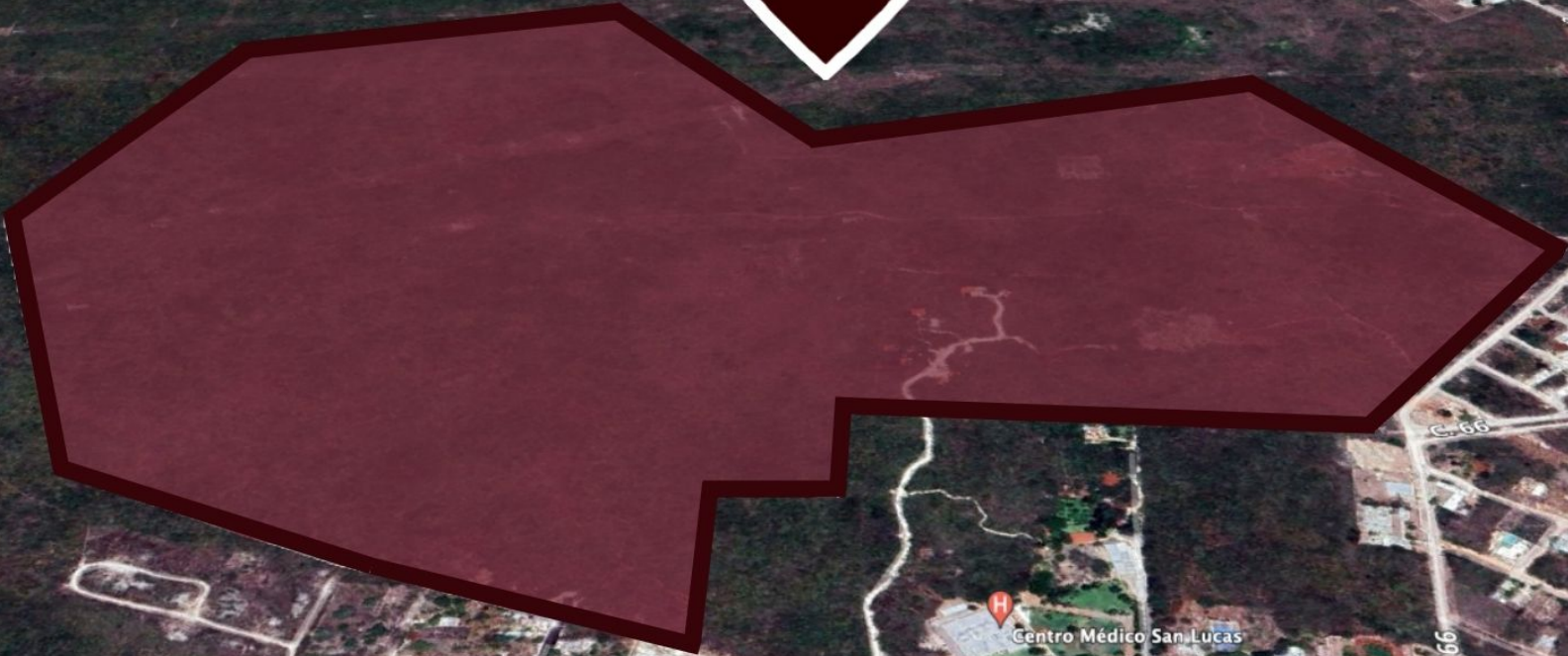
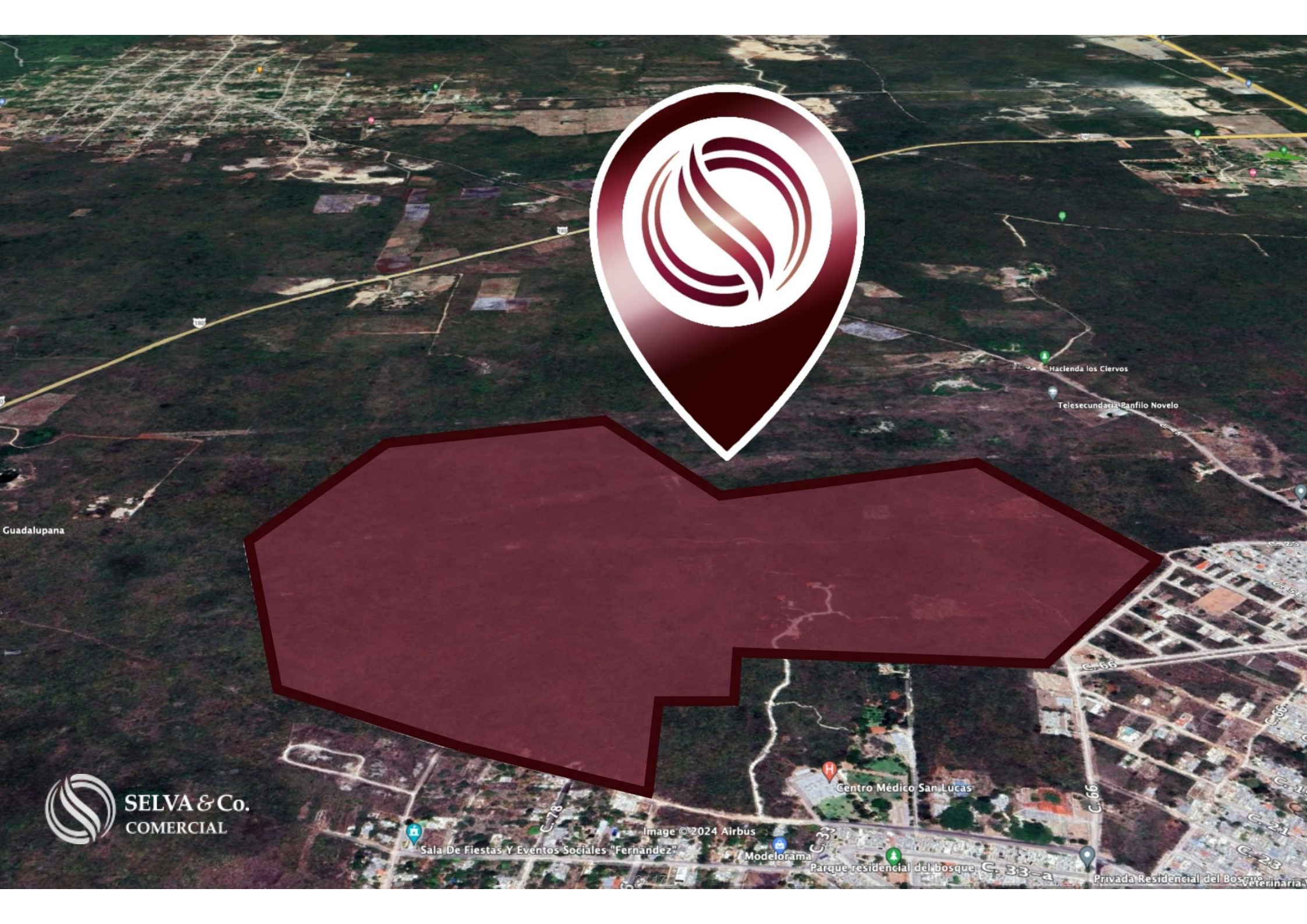
**SELVA & Co.**  
COMERCIAL

[www.selvacomercial.com](http://www.selvacomercial.com)



# Macro lot of 229,053 m<sup>2</sup> near X Corazon development, Valladolid.

<i>ID: ALME202-1</i>	<i>Location: Valladolid</i>
<i>Zone: Fraccionamiento X Corazon</i>	<i>Type: Land</i>
<i>Land: 229,053 m<sup>2</sup> / 2,465,526.49 ft</i>	<i>Land ha: 22.91 ha / 56.60 ac</i>





 SELVA & Co.  
COMERCIAL

Image © 2024 Airbus

Centro Médico San Lucas

Hacienda los Ciervos

Telesecundaria Panfilo Novelo

Cancha de fútbol Nueva X-Corazón

C-68

Jubilados y Pensionados de Valladolid

CONAFE Valladolid

C-78

C-66

4/1

Fechas de imágenes: 5/4/2023, 20°42'05.71" N 88°13'03.49" O elevación 231





**Las Coloradas**

**Río Lagartos**

**Holbox**

**Progreso**

**Cancún**

**Mérida**

**Reserva Estatal  
Geohidrológica  
Anillo de Cenotes**



**Terreno en venta**  
*Land on sale*

**Playa del  
Carmen**

**Cozumel**

**Tulum**





©2020 Google

©2020 Google





**Vallazoo  
Zoológico**

**Supermercado  
Supermarket**

**Centro  
Valladolid  
Downtown**



**Hospital**

**TERRENO  
LOT**

## Description

ALME202-1

Macro lot of 229,053 m<sup>2</sup> near X Corazon development, Valladolid.

Land for developers located in the Magical Town of Valladolid, next to the X Corazón housing development.

### ABOUT VALLADOLID

Valladolid is a municipality in Yucatán that has been considered a magical town since 2012.

### PROPERTY STATUS

Property deed, legal certainty.

### LOCATION

Land for sale in Valladolid, Yucatán, very close to the X Corazón housing development, a growing area with family residential developments, parks, entertainment, and more.

9 minutes from Downtown Valladolid.

10 minutes from the Valladolid Zoo.

8 minutes from the nearest supermarket.

If you want more information about this land or learn more about the real estate market in Valladolid area, contact us. We will be happy to help you with your new investment.

The official price of this property is in pesos; the price in dollars is a reference. The exchange rate of the day will be used for the purchase.

Schedule your appointment to visit the area or call us to resolve your doubts.

#Mérida #Méridaproperties #Valladolid #Méridalistings  
#selvacorealty #Méridarealestate #realestateMérida  
#landbankingMérida #landbankingValladolid  
#commercialandMérida #lotsandlandMérida  
#lotsforsaleMérida #landforsale #lotsforsaleValladolid

# Location





**SELVA & Co.**  
**COMERCIAL**

MX 984 803 2058 / US 805 308 2900  
[www.selvacomercial.com](http://www.selvacomercial.com)