



**SELVA & Co.**  
COMERCIAL

[www.selvacomercial.com](http://www.selvacomercial.com)



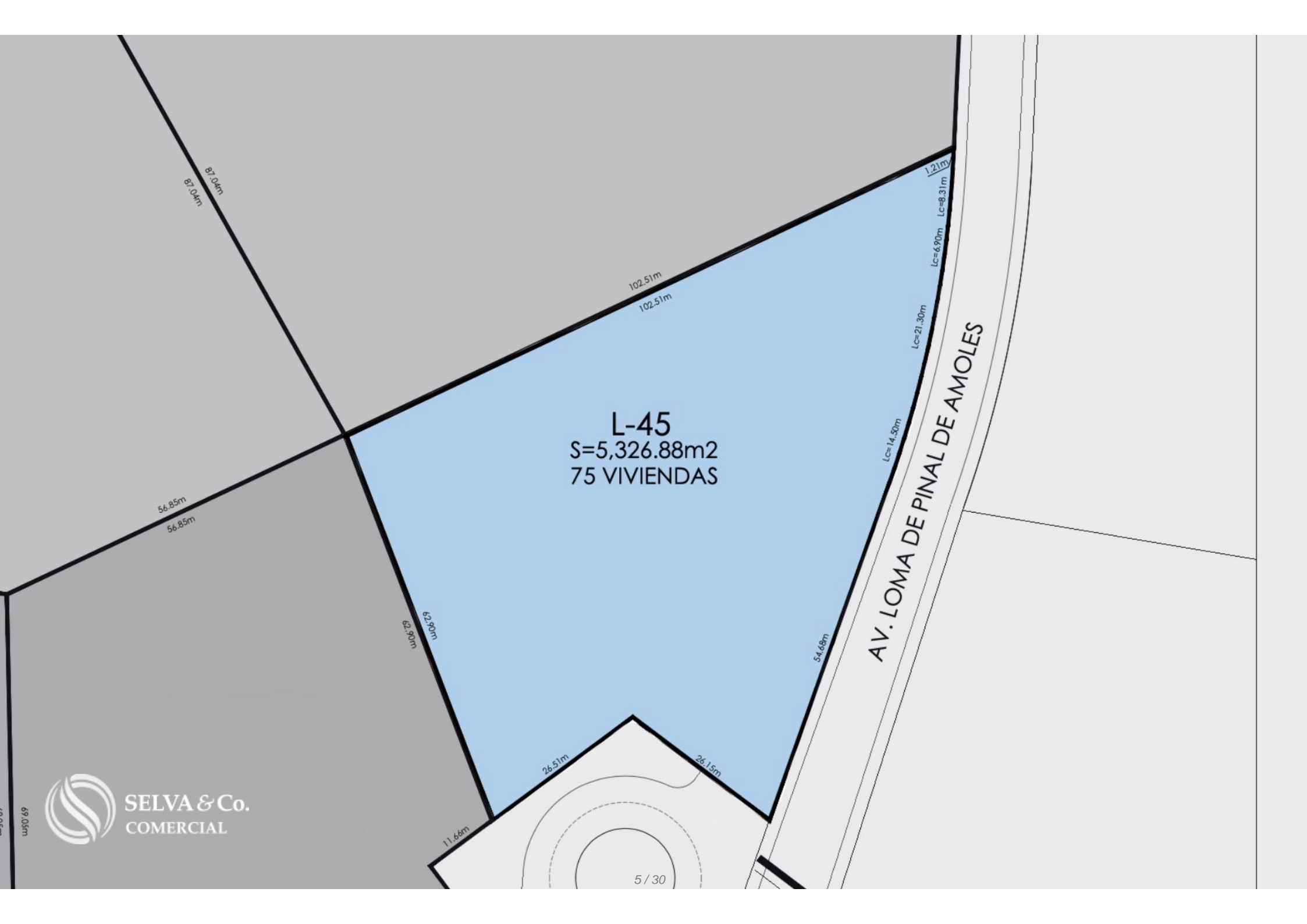
# Mixed-use macrolot 5,327 m2 in vertical urban development, for sale in Querétaro.

<i>ID: BLQR201-6</i>	<i>Location: Queretaro</i>
<i>Zone: Santiago</i>	<i>Type: Land</i>
<i>Land: 5,326 m2 / 57,329.06 ft</i>	<i>Land ha: 0.53 ha / 1.32 ac</i>



An aerial photograph of a property. A large, irregular red polygon is overlaid on the image, highlighting a specific area. The text '5,326 m2' is written in white with a black outline inside the polygon. The background shows a mix of built-up areas, including a large building with a dark roof and a circular driveway, and natural, wooded terrain.

**5,326 m2**



L-45  
S=5,326.88m<sup>2</sup>  
75 VIVIENDAS

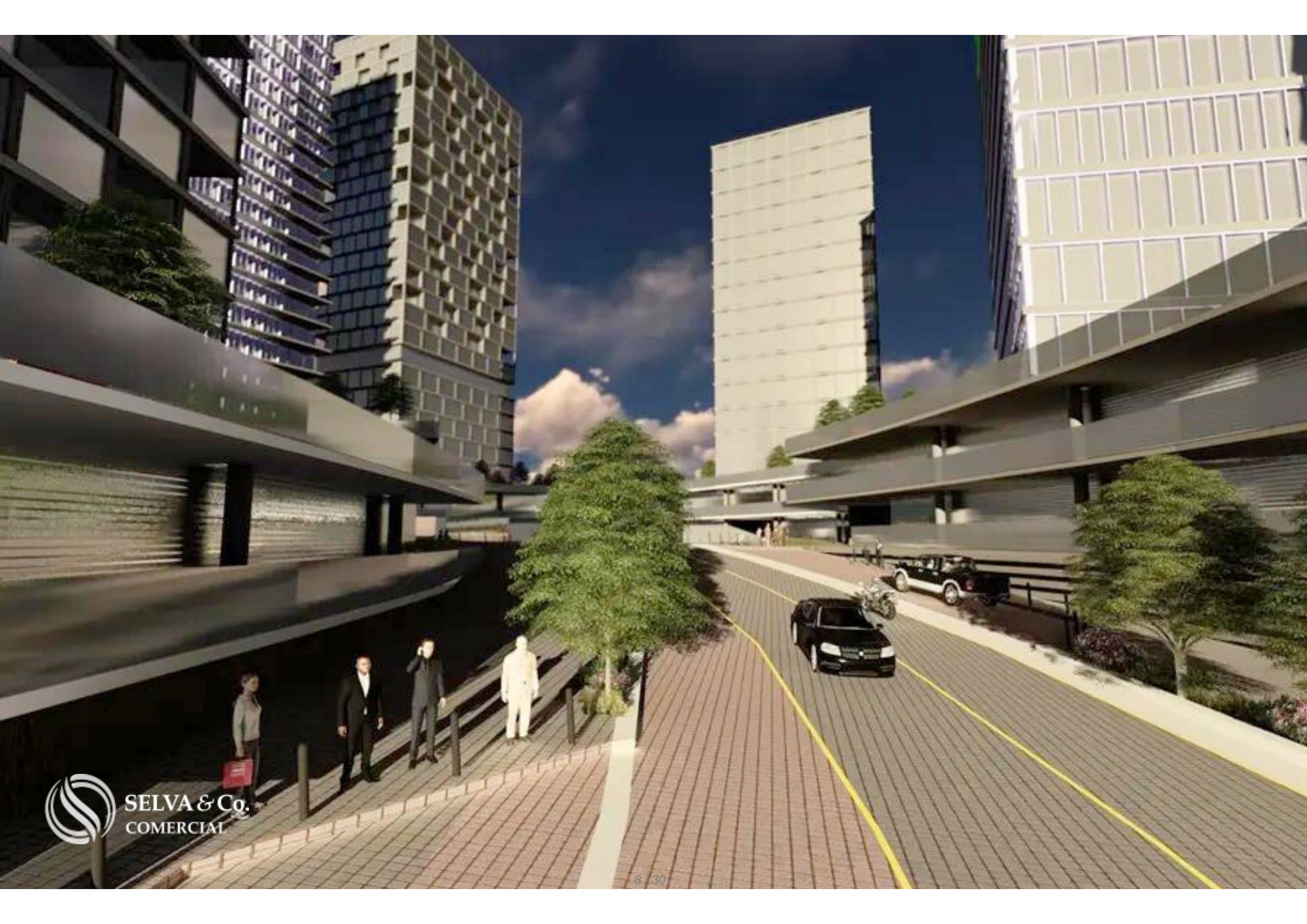
AV. LOMA DE PINAL DE AMOLES



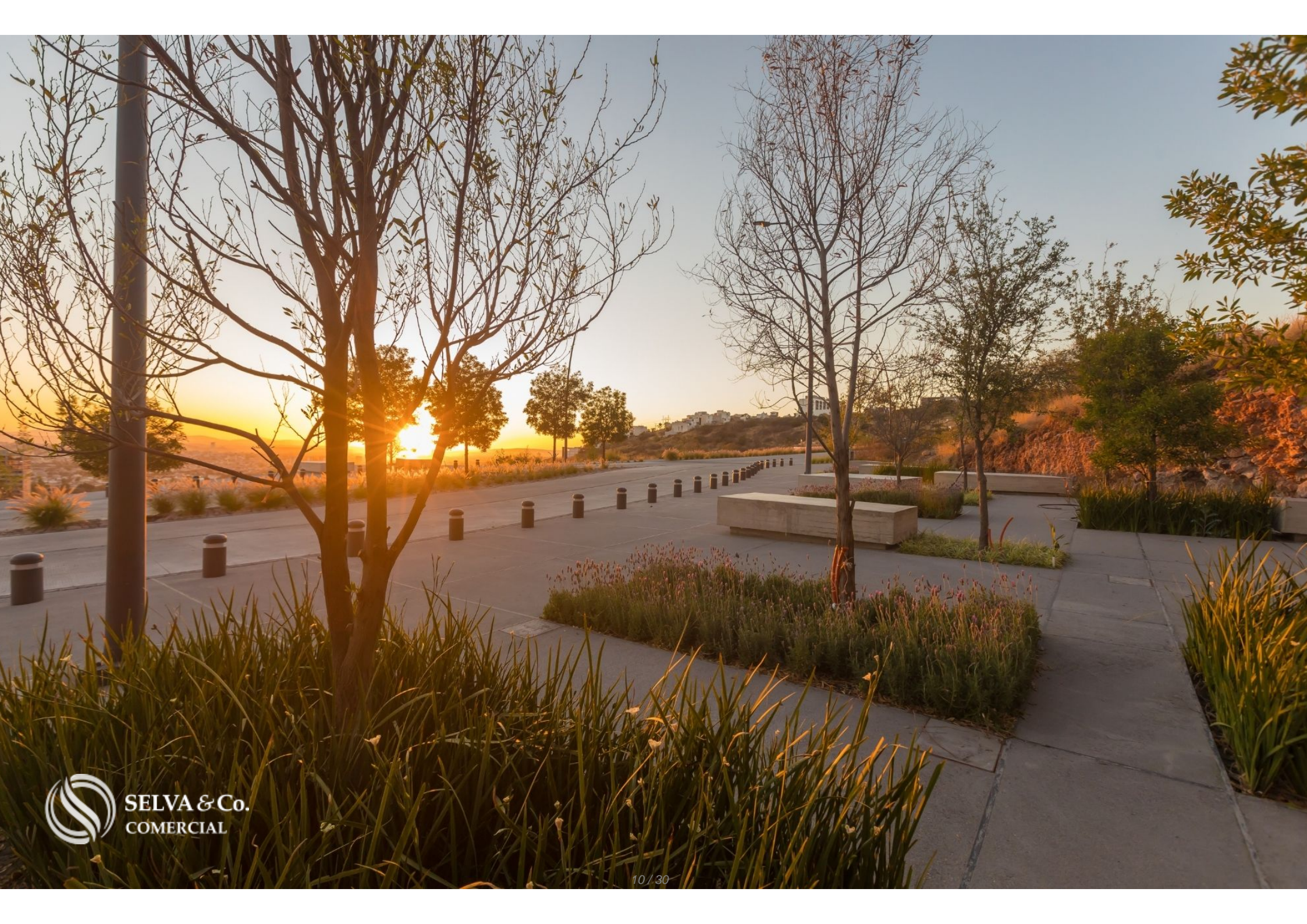
# Puente de acceso exclusivo al desarrollo - *Exclusive access bridge to the development*















**Club Campestre  
Country Club  
"El Campanario"**

**Acueducto  
de Querétaro**

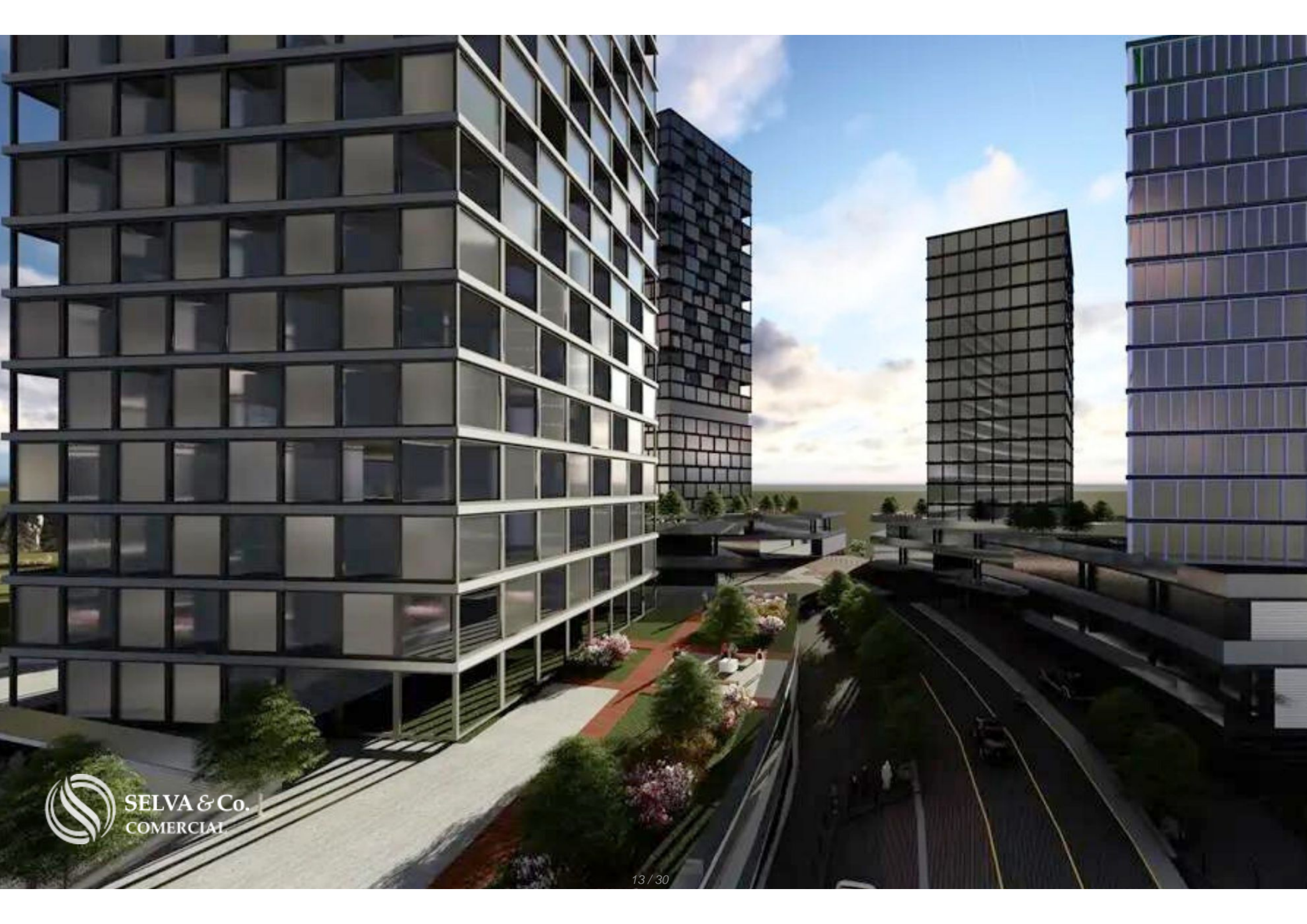


**Supermercado  
Supermarket**

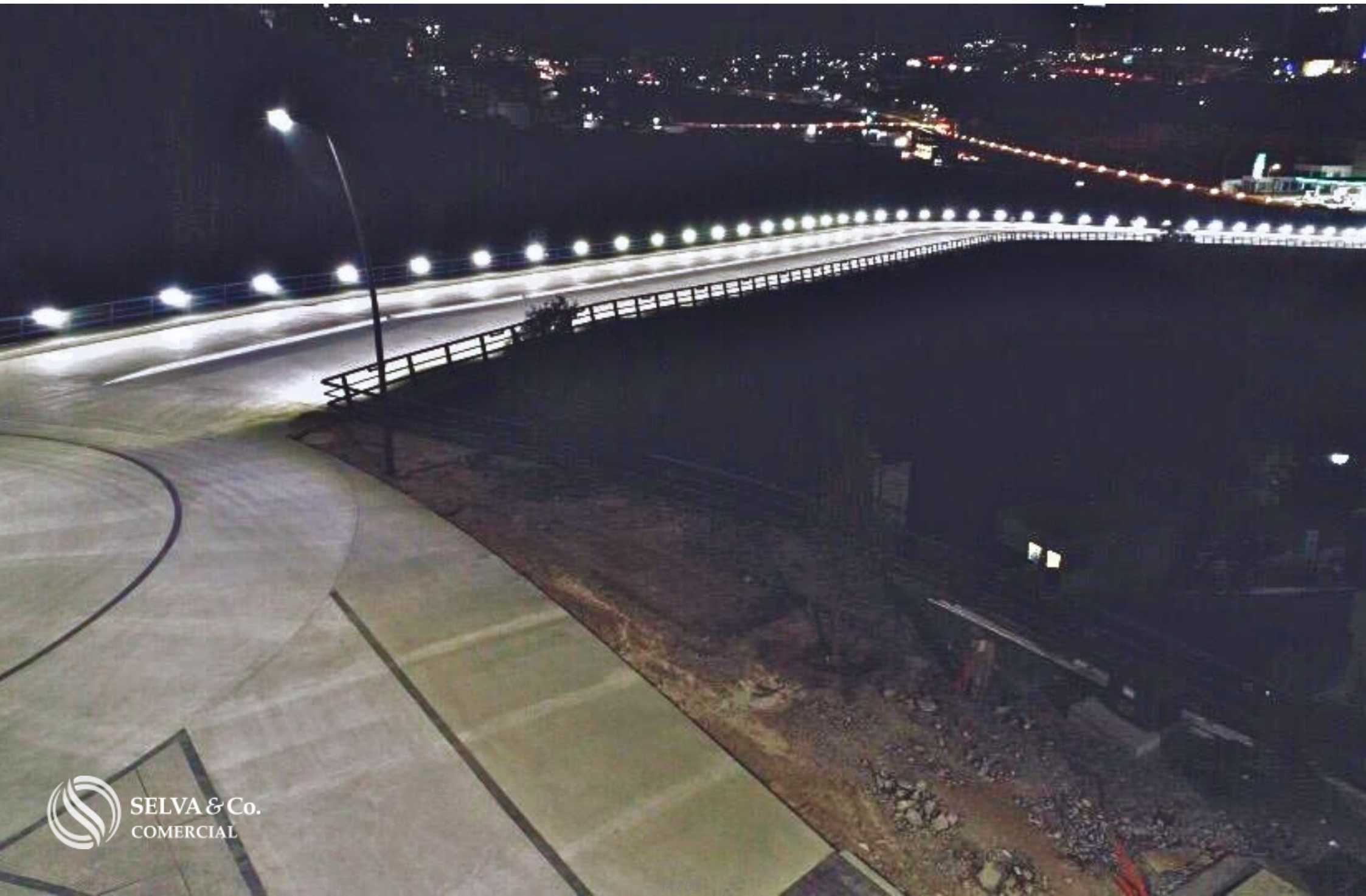
**Plaza - Mall  
"Las Américas"**

**Supermercado  
Supermarket**

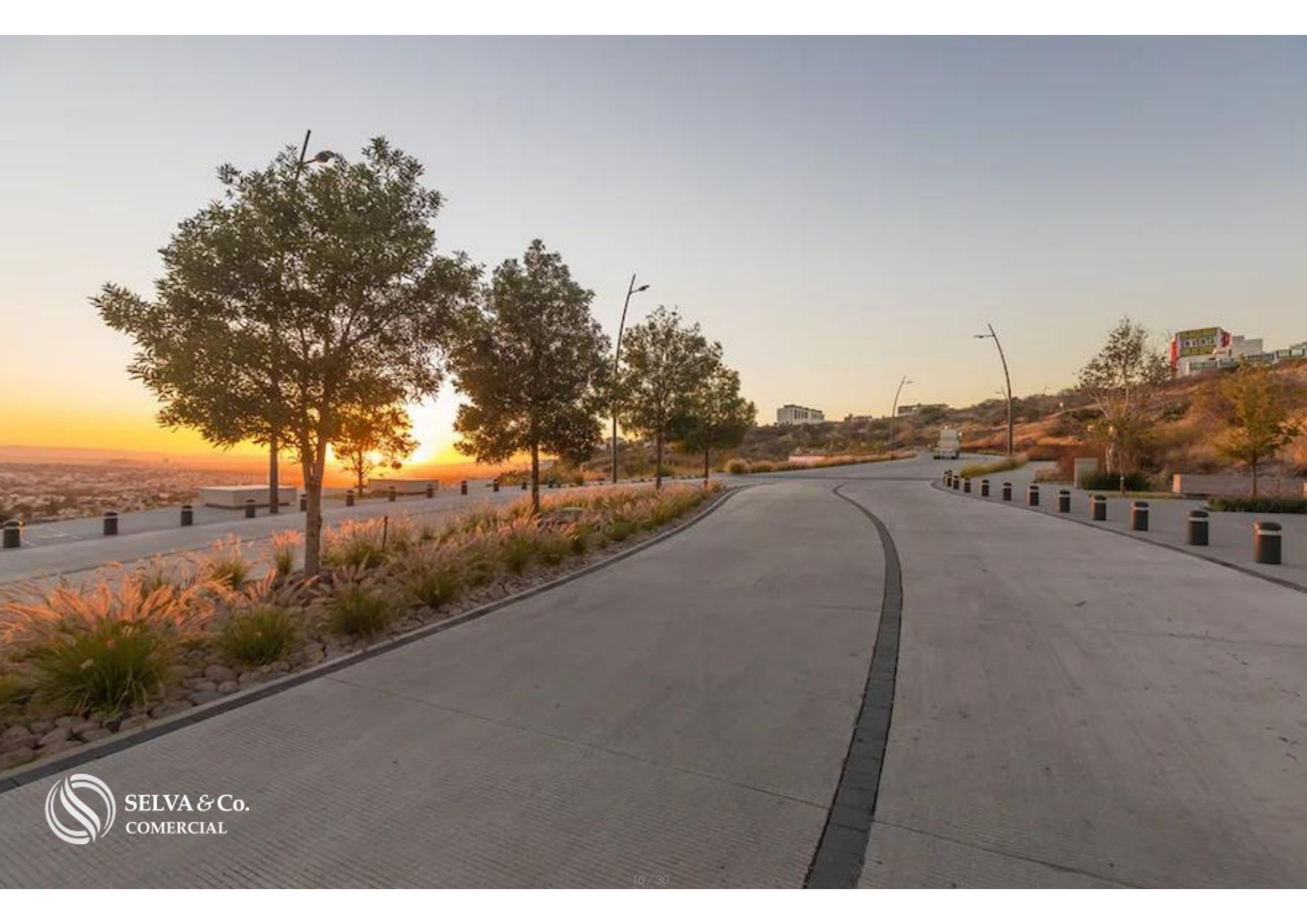
**TERRENO  
LOT**



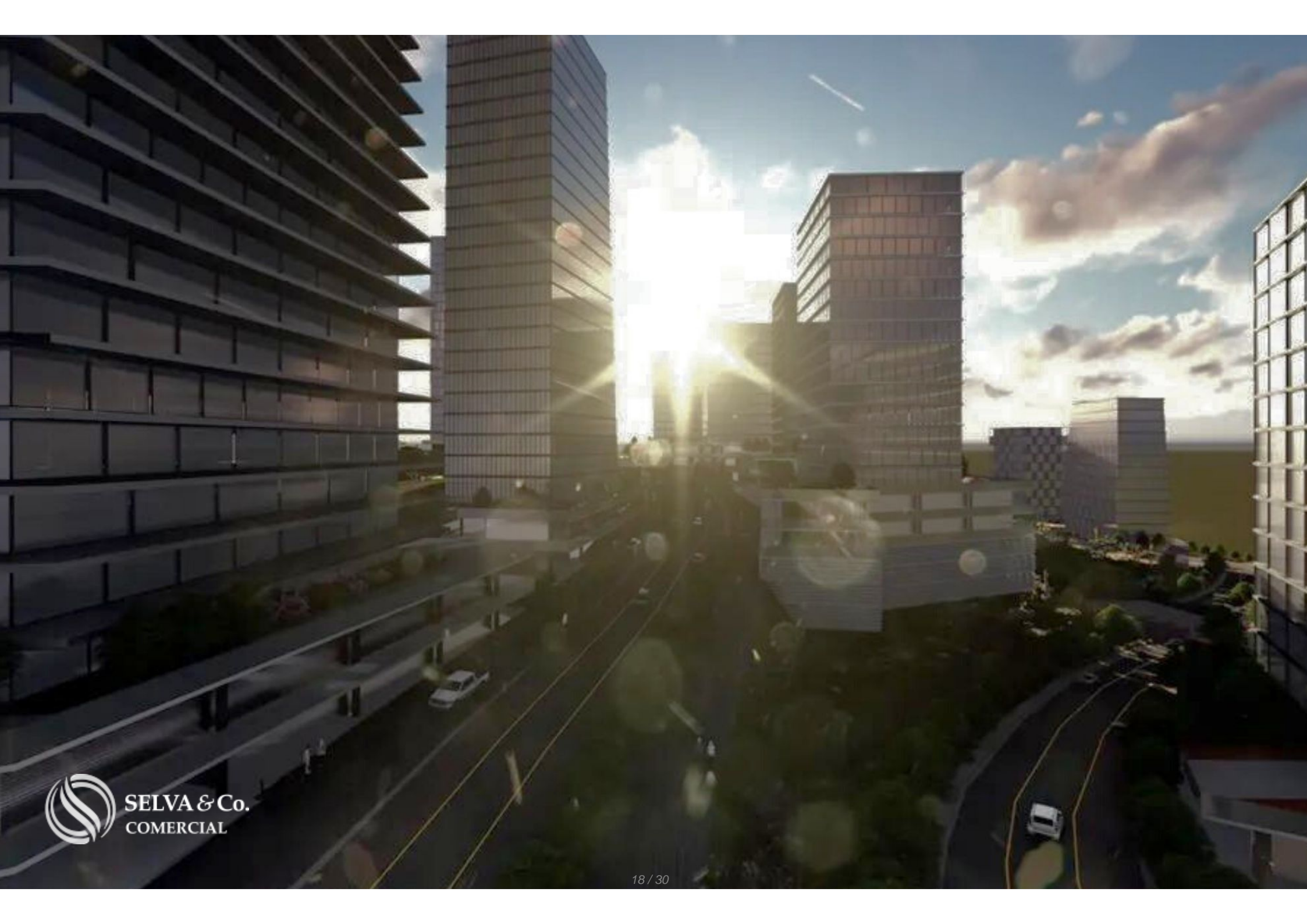
SELVA & Co. |  
COMERCIAL











# Club Campestre “El Campanario” - *Country Club Golf*



 SELVA & Co.  
COMERCIAL

# Acueducto de Querétaro - Querétaro Aqueduct





 SELVA & Co.  
COMERCIAL

**Centro - Downtown**



 SELVA & Co.  
COMERCIAL

## Description

BLQR201-6

Mixed-use macrolot 5,327 m<sup>2</sup> in vertical urban development, for sale in Querétaro.

Urban development with an area of 131,276 m<sup>2</sup>, distributed into 20 exceptional mixed-use macro lots, the only vertical community in El Bajío.

Excellent option for investors and developers, as they will be able to choose the type of construction they desire. The surroundings of the complex boast abundant nature, providing residents with incredible views of the urbanization and other spaces.

Land located to the east of Querétaro, very close to services and social centers of the city, such as schools, parks, green areas, hospitals, supermarkets,

shopping centers, sports centers, business centers, industrial zone, and more.

## LAND CHARACTERISTICS

Land use: Residential, commercial, and services.

Cos: 80%

Cus: 6.0

## TYPE OF CONSTRUCTION

Apartments

Offices

Hotels

Hospitals

Commerce

Services

## SERVICES

Urbanization and all hidden services at the foot of each lot.

Concrete hydraulic roads.

Distribution road squares.

Bike paths.

Water service.

Sanitary and storm drainage.

Exclusive access bridge to the community.

Electric power.

Optical fiber.

Natural gas.

## PROPERTY STATUS

Property title, legal certainty.

## LOCATION

Macro lot for sale in Colonia Milenio III, Querétaro, in a growing area

surrounded by new buildings, shopping centers, entertainment, universities, and much more.

## PLACES NEAR THE LOT

10 minutes from Downtown Querétaro.

13 minutes from Plaza las Américas.

12 minutes from the famous "Acueducto de Querétaro."

Supermarkets just minutes away such as: Walmart express and Fresko la comer.

30 minutes from the Golf Club.

Variety of restaurants.

Department stores.

Schools.

Hospitals.

Banks.

If you want more information about this land or learn more about the real estate



#macrolotsQuerétaro

## Location





**SELVA & Co.**  
**COMERCIAL**

MX 984 803 2058 / US 805 308 2900  
[www.selvacomercial.com](http://www.selvacomercial.com)