



SELVA & Co.
COMERCIAL

www.selvacomercial.com



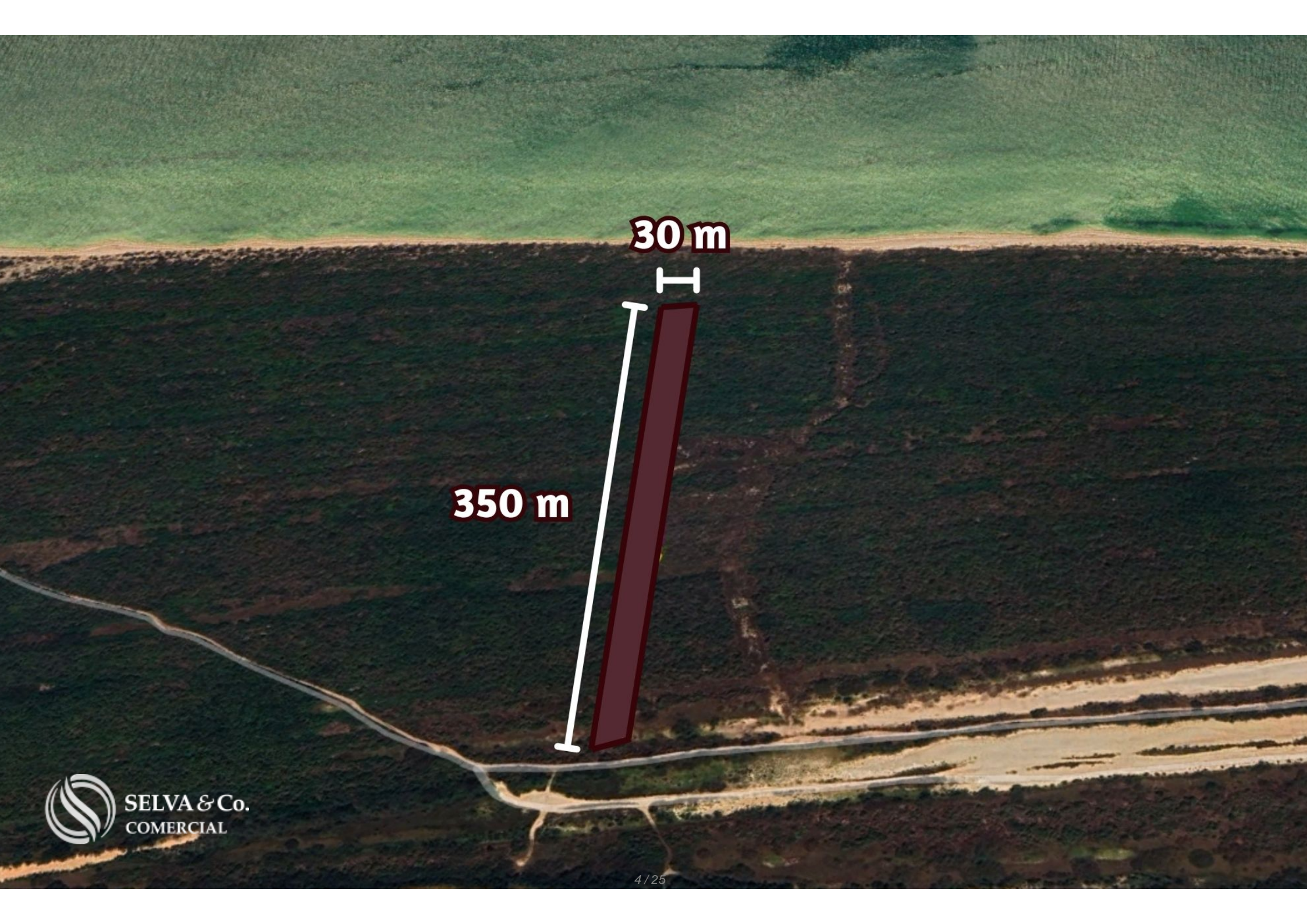
10,689 m²

Oceanfront lot of 10,690 sqm, multifamily, for sale in Yucatan.

<i>ID: ALME200-3</i>	<i>Location: Celestun</i>
<i>Zone: El Palmar</i>	<i>Type: Land</i>
<i>Land: 10,690 m2 / 115,067.16 ft</i>	<i>Land ha: 1.07 ha / 2.64 ac</i>
<i>Land use: Multifamiliar</i>	



10,689 m²



30 m



350 m

Total: 10,689 m²











Reserva ecológica
Ecological Reserve
"El Palmar"

**Reserva ecológica
estatal, El Palmar**

“El Palmar”



**Reserva de la
biosfera, Ría
Celestún**

Ría Celestún

Celestún

**TERRENO
LOT**

TERRENO EN VENTA



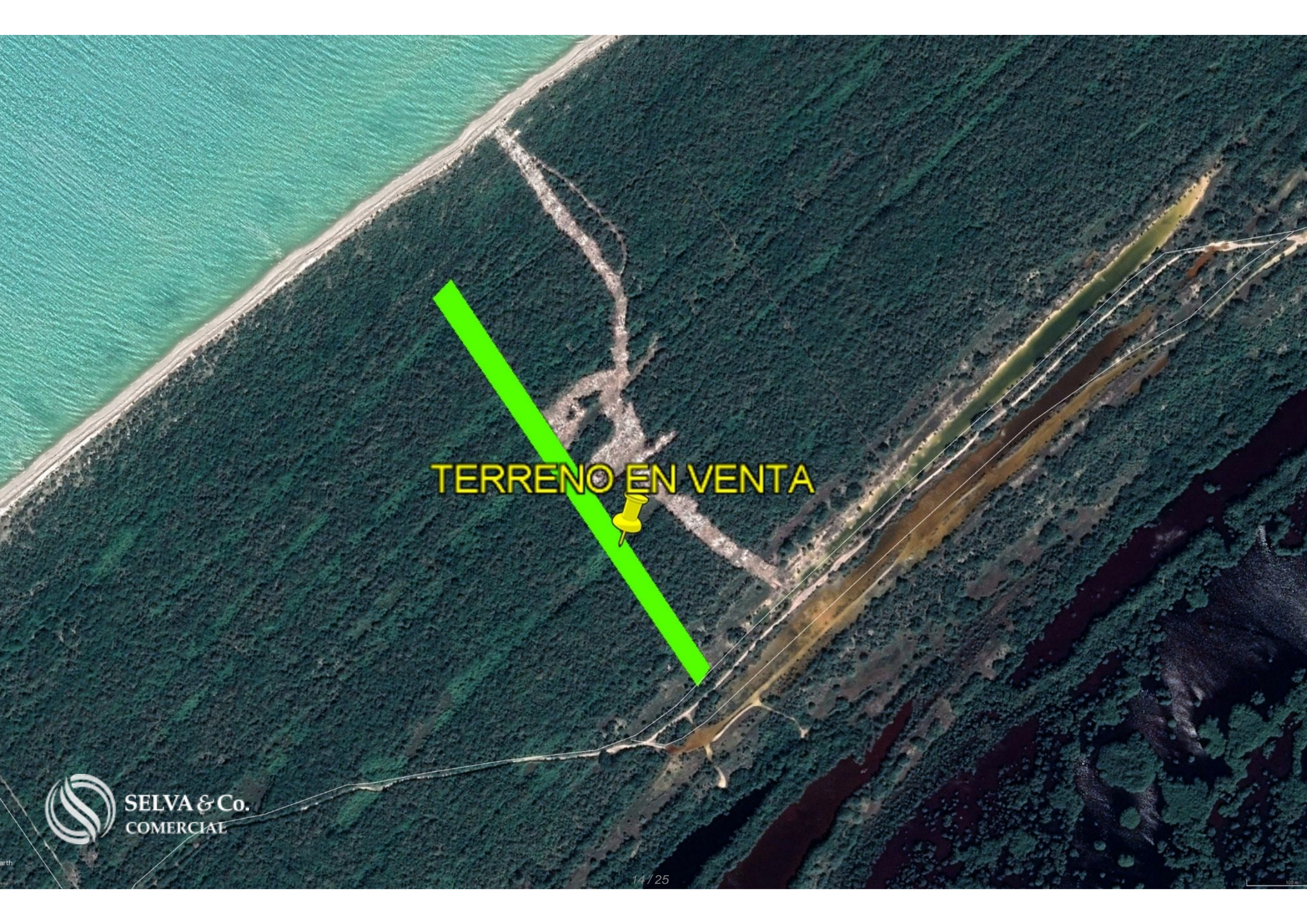
Sisal

Hunucmá

Umán

 **Celestún**
SELVA & Co.
COMERCIAL





TERRENO EN VENTA

Reserva ecológica
Ecological Reserve
"El Palmar"



Reserva ecológica
Ecological Reserve
"El Palmar"



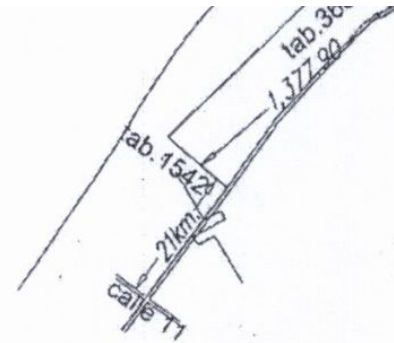


Reserva de la Biosfera "Ría Celestún"



GOLFO DE MEXICO
zona maritima federal

30.00



6
Tablote 3830
fracción 5
362.11
Tablote 3831
fracción 7
350.55
Tablote 3832

32.07
AL PALMAR
(prolong. calle 12.)
Camino hacia celestón y siba
INSTITUTO DE SE
EST

Description

ALME200-3 Andrea Llergo

Oceanfront lot of 10,690 sqm, multifamily, for sale in Yucatan.

Multifamily land facing the sea, with a beautiful white sand beach and dune at the front.

Located within the ecological reserve "El Palmar" in Celestún, and just minutes away from the beautiful "Celestún Biosphere Reserve."

Due to its incredible location, it offers beautiful views of the sea and nature.

LAND FEATURES

Land use: Multifamily

Paved road

Sand road

PROPERTY STATUS

Property title, legal certainty.

PRICE PER LINEAR METER

\$190,000.00 MXN

DIMENSIONS

30 x 350

Total: 10,689.55 sqm

LOCATION

Land for sale in Celestún, Yucatán, facing the beautiful beach and surrounded by ecological reserves, very close to the lighthouse.

30 minutes from the municipal seat of Celestún.

2 hours from Mérida.

If you want more information about it or learn more about the real estate market in the Celestún area, contact us. We will be happy to help you in your new investment in Yucatán.

The official price of this property is in pesos the price in dollars is a reference. The day's exchange rate will be used for the purchase.

Schedule your appointment to visit the area or call us to answer your questions.

Location





SELVA & Co.
COMERCIAL

MX 984 803 2058 / US 805 308 2900
www.selvacomercial.com